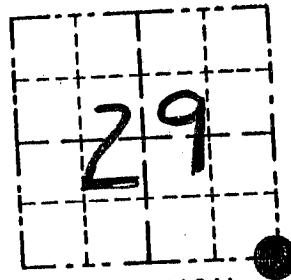


# GRANT COUNTY

## Survey Monument Record

TYPE OF MONUMENT 3/4" IRON BAR SET  
 STATE PLANE COORDINATES: N \_\_\_\_\_  
 E \_\_\_\_\_  
 ELEVATION — M.S.L. DATUM: \_\_\_\_\_  
 THETA ANGLE: \_\_\_\_\_  
 FIELD BOOK: 9321  
 PAGE \_\_\_\_\_

CORNER NO. 109  
 SECTION 29  
 TOWN 5 N  
 RANGE 1 W



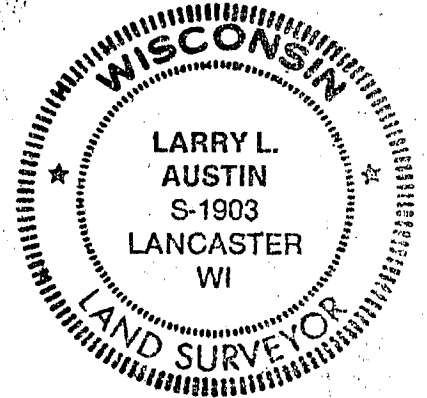
LOCATION  
 (Indicated by "●")

### BASIS FOR MONUMENT LOCATION

(Use reverse side if necessary)

Show info such as: History of corner, with reference to Vol. and pg., dates, surveyor; exact description of monument replaced; if location computed, by taped or EDM traverse; landowner, remarks, etc.

SEAL:



CORNER SET IN 1988 BY  
 MALLIET; CORNER WAS REMOVED  
 BY CO. HWY CONST. IN 1993;  
 REPLACED CORNER BY TRAVERSING  
 IN FROM FOUND MONUMENTS  
 OF 1988 SURVEY BY MALLIET.  
 (PREVIOUS TIES ALSO LOST BY  
 CO. HWY CONST.)

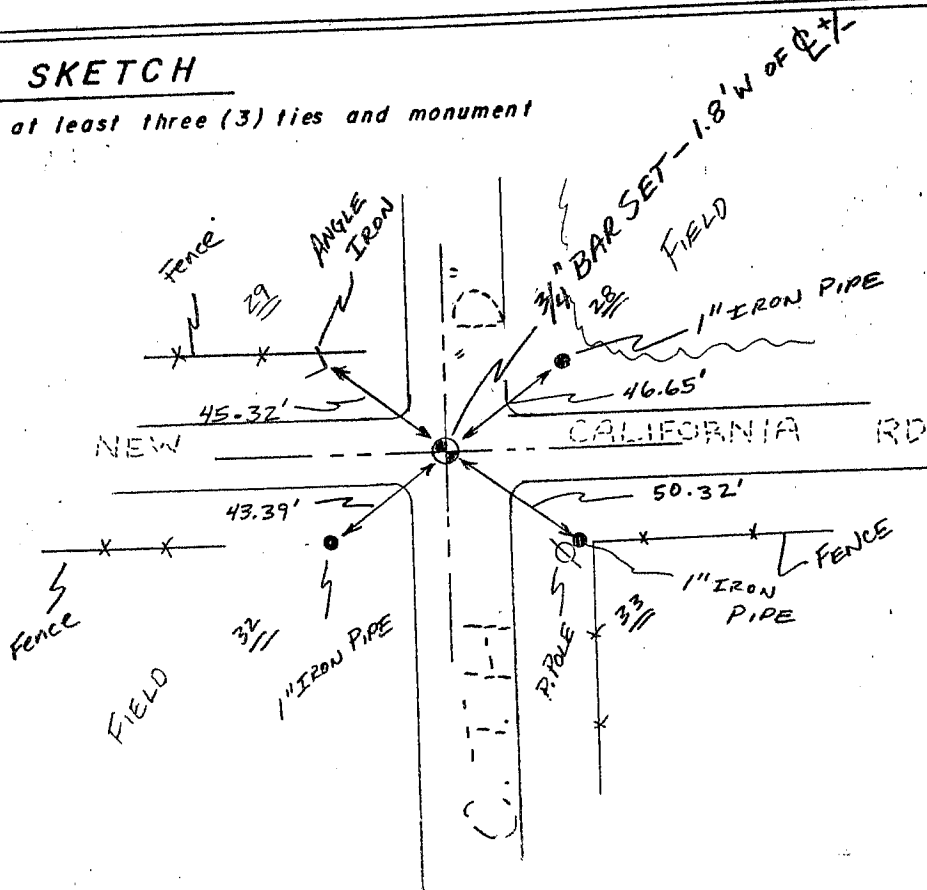
CERTIFIED CORRECT

*Larry L. Austin*  
 Registered Land Surveyor

DATE: 1/5/94

### TIE SKETCH

Show at least three (3) ties and monument



NO SCALE

Little Grant

CORNER DESCRIPTION: NE CORNER, SECTION 32, T 5 N, R 4 W

STATE PLANE COORDINATES: N \_\_\_\_\_, E \_\_\_\_\_

THETA ANGLE: \_\_\_\_\_

HORIZONTAL DATUM: WISCONSIN STATE PLANE COORDINATE SYSTEM, SOUTH ZONE

EVIDENCE: USED OCCUPIED LOCATION FROM EXISTING FENCE LINE

MONUMENT: FOUND , PLACED

METHOD OF RESTORATION (RE-ESTABLISHMENT):

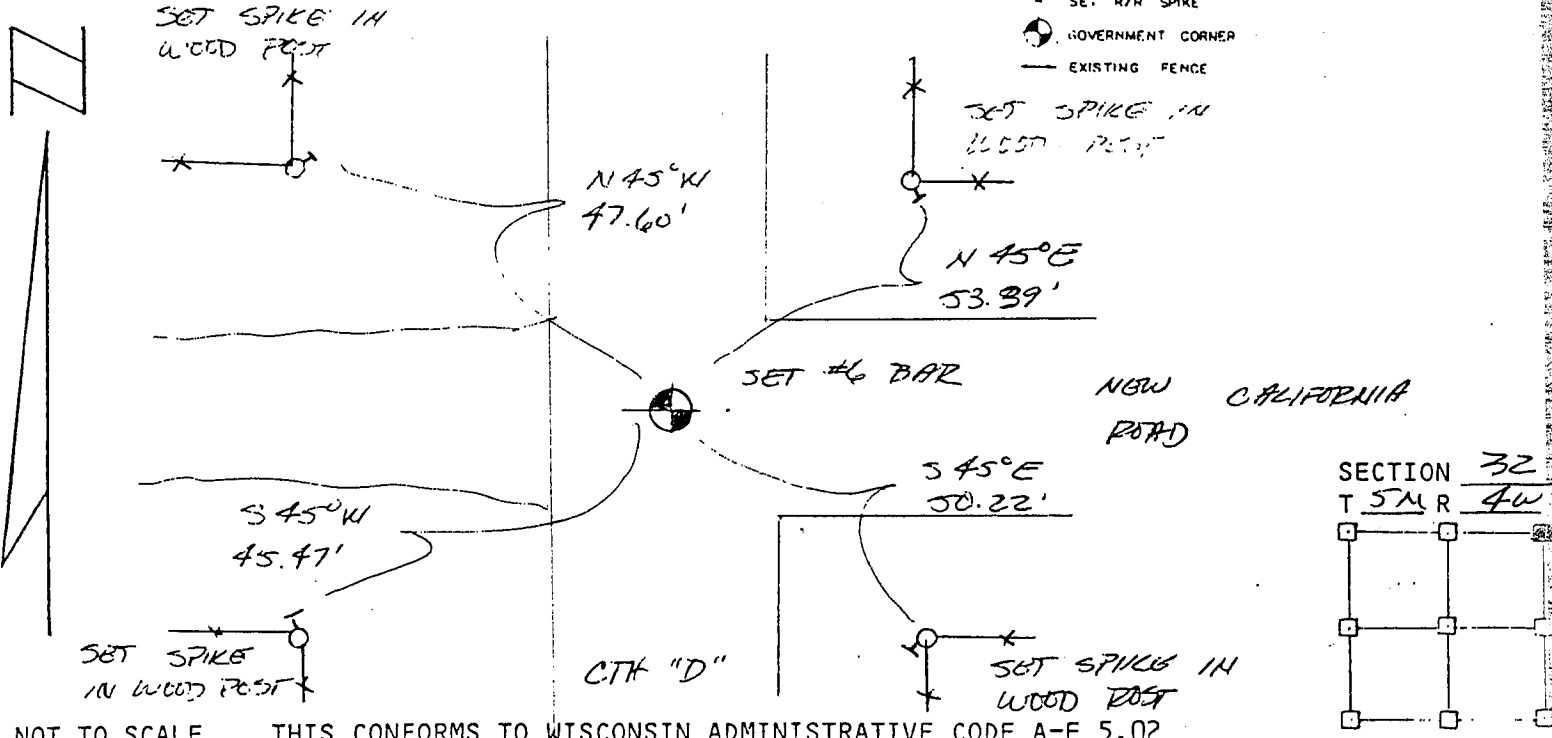
ACCEPTED EXISTING MONUMENT

N , E  ACCEPTED OCCUPATION

N , E  LOST CORNER PROPORTIONATE METHODS

DATE CORNER SET: 11.22.88

- LEGEND
- ▲ SET #6 REBAR, 113 LBS PER LINEAL FT MIN WT
  - SET 1" X 24" IRON PIPE, 113 LBS PER LINEAL FT MIN WT
  - SET 2" X 30" IRON PIPE, 365 LBS PER LINEAL FT MIN WT
  - FOUND 1" IRON PIPE
  - FOUND 2" IRON PIPE
  - FOUND R/R SPIKE
  - SET R/R SPIKE
  - GOVERNMENT CORNER
  - EXISTING FENCE



NOT TO SCALE THIS CONFORMS TO WISCONSIN ADMINISTRATIVE CODE A-E 5.02

SURVEYOR'S AFFIDAVIT:

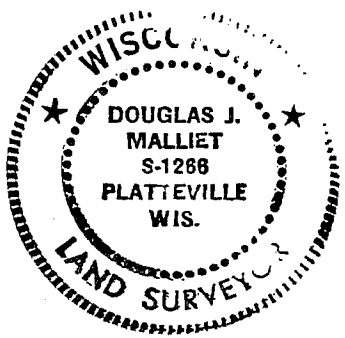
STATE OF WISCONSIN)

GRANT COUNTY) SS

I hereby certify that I, DOUGLAS J. MALLIET, have complied with the Wisconsin State Statutes, Statutes of the United States, and the rules and regulations made by the Secretary of the Interior in the location of the corner shown above.

DATE OF SURVEY: 12.8.88

Douglas J. Malliet  
REGISTERED LAND SURVEYOR  
# 12466



D. F. BURBACH MUNICIPAL & CIVIL ENGINEERS

410 NORTH SECOND STREET • PLATTEVILLE, WISCONSIN 53818 • (608) 348-3262

0109