

U.S. PUBLIC LAND SURVEY MONUMENT RECORD

DT1291 96 (Replaces ED716)

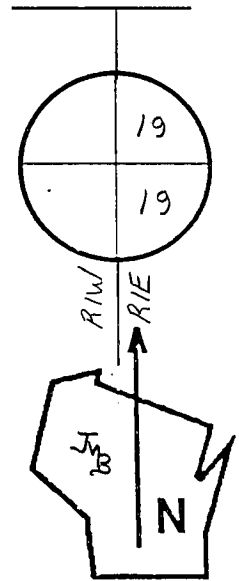
Wisconsin Department of Transportation

County Name Iowa		Name of (Township) / City / Village (Circle One) Mifflin	
Surveyor Name Bowden Surveying, Ltd.			
Address, City, State, Zip Code 619 W. Merrimac Street, Dodgeville, WI 53533			
X (Easting) 299614.18'	Y (Northing) 129090.05'	Latitude	Longitude
Project ID 5035-00-01		Coordinate ID 5-1-074	

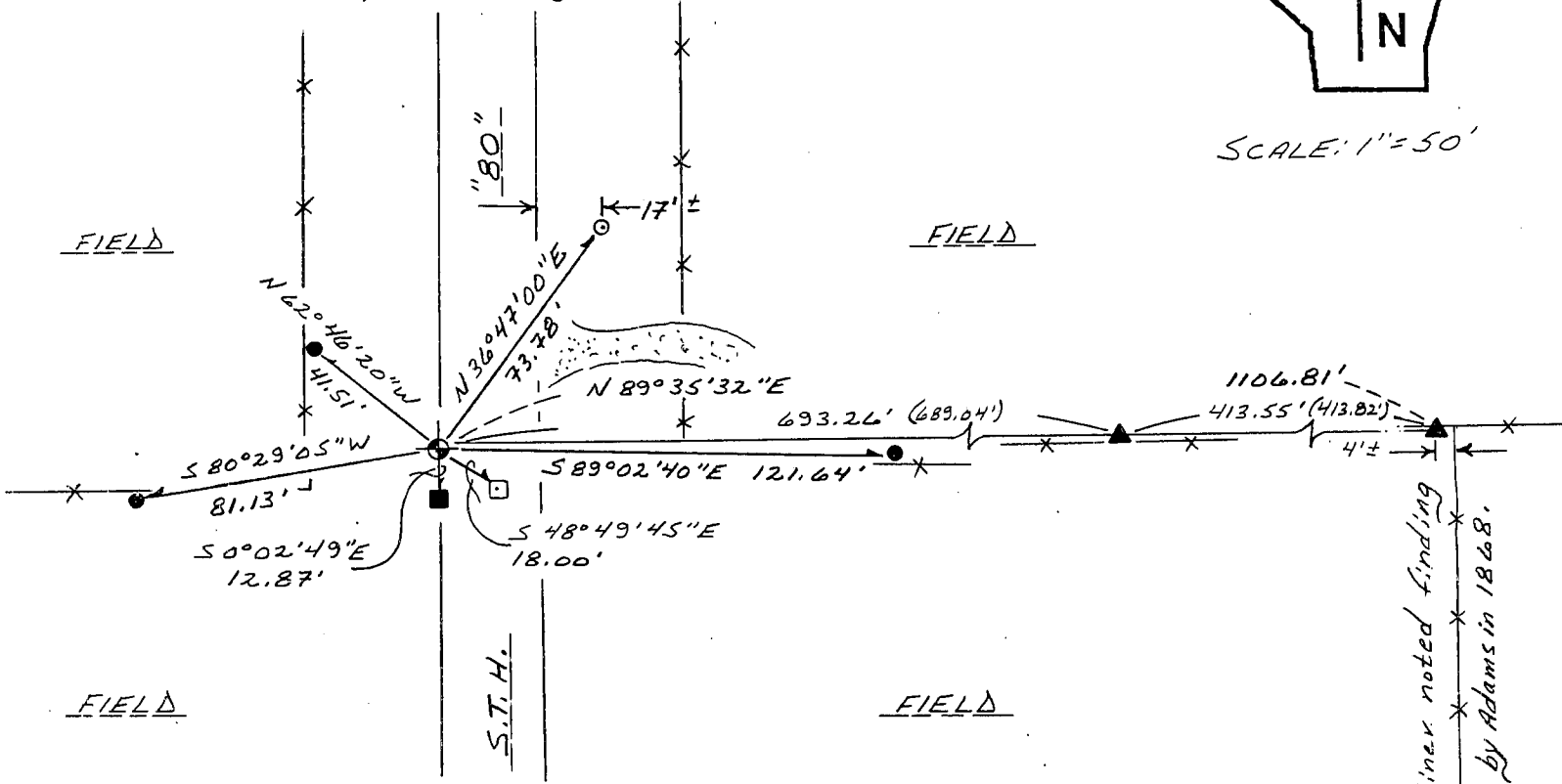
T. 5 N. - R. 1 E.
4th Principal Meridian
Corner 74

HORIZONTAL DATUM	UNITS	COORDINATE SYSTEM
<input type="checkbox"/> NAD 27	<input checked="" type="checkbox"/> English	<input type="checkbox"/> Geodetic
<input checked="" type="checkbox"/> NAD 83 (91)	<input type="checkbox"/> Metric	<input type="checkbox"/> State Plane _____ Zone
		<input checked="" type="checkbox"/> County <u>Iowa</u>

Location Diagram, showing corner identification name, bearing and distance references to at least four witness monuments, fence or occupational lines, centerlines of roads, and other site details for reference. Also, show the bearings and distances between the witness monuments.



SCALE: 1" = 50'



Indicate fd. = found or pl. = placed in the diagram above

Bearings used in the location sketch and basis for monument location are Iowa C&G Coordinates.

Monumentation Legend / Description of Corner and Witness Monuments:

- ⊕ 3" dia. x 30" cast iron monument - set
- 1" dia. iron rod - found
- Grant Co. rebar and aluminum cap by Austin (12/19/2000) - found
- #4 (1/2" dia.) rebar - found
- ⊙ #4 (1/2" dia.) x 24" rebar (disturbed tie) - set
- ▲ Stone - found

If applicable, show any discrepancy between the location of the corner as restored or re-established and the location of that corner as previously restored or re-established by bearing and distance. Also, show the bearings and distances between the previous corner and at least two of the witness monuments. See reverse.

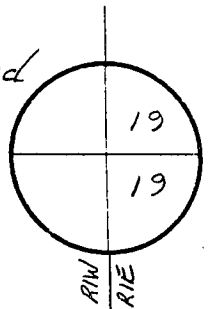
Basis for Monument Location

1. Describe any record evidence, monument evidence, occupational evidence or any other material evidence including traverse measurements that you considered, and whether the monument was found or placed. Explain below, be specific, and attach a separate sheet if necessary.
2. Was the corner:
 - a) found perpetuated,
 - b) restored through acceptance of obliterated evidence,
 - c) relocated by witness testimony, or
 - d) accepted as a remonumented corner of record and maintained with additional monumentation?
3. Was the corner re-established through lost corner proportionate methods? If so, show the method, including the directions and distances to other public land survey corners used as evidence or used in determining the corner location.

Please Type or Print

1. Original government survey. C.C. Rynerson found the quarter post in a survey dated 6/20/1840. Robert Wilson set a post for the corner (presumably half-way between the Northwest and Southwest corners of Section 19) in a survey dated 4/20/1860. R.L. Joiner found a stone at the corner in a survey dated 4/6-7/1882. In the course of the 1882 survey, Joiner also found a stone at the Center of Section 19 and noted two stones between the West Quarter corner and the Center of Section. Bruce Bowden and I found all three of those stones. As noted on Grant Co. C.S.M. #233 (11/27/1984) Bowden set a 1" dia. solid iron rod at the East Quarter corner of Section 24, which we also found. A line extended through the two closest stones noted by Joiner intersects the 4th principal meridian at the correct offset from Bowden's monument. I accepted the described location as the corner location. The accepted meridian line is 13.5'± West of the line monumented by L. Austin in 2000.

T. 5 N. - R. 1 E.
 4th Principal Meridian
 Corner 74



2. b).

3. No.

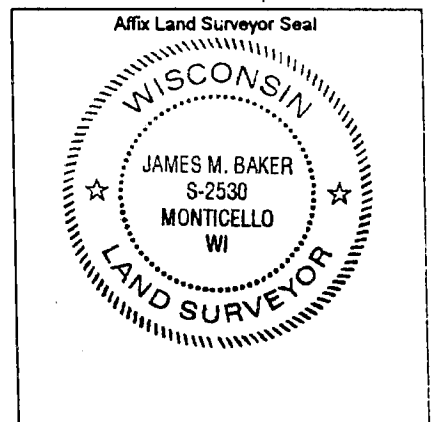
Certification

I, James M. Baker

(type or print name) certify that the corner location shown on this record was determined by me or under my direction and control and that this U.S. Public Land Survey Monument Record is correct and complete to the best of my knowledge and belief, in accordance with Chapter A-E 7.08 of the Wisconsin Administrative Code.

Section Control Data Sheets have been filed in the County Surveyor's office, showing final measurements by direction and distance between all remonumented corners. Section Control Information is referenced by the following:

Date	Project ID	Sheet(s)



X James M. Baker, RLS-2530
 (Registered Land Surveyor Signature and Number)

4/18/2005
 (Date)

GRANT COUNTY CERTIFIED LAND CORNER

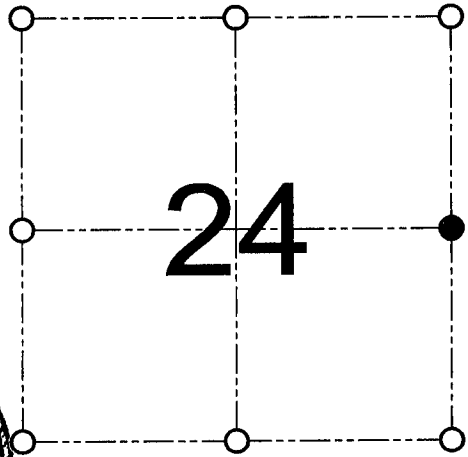
CORNER NUMBER 80

CERTIFICATE:

I, Larry L. Austin, do hereby certify that on the 3rd day of November, 2000, I found evidence of the East 1/4 corner of Section 24, Town 5 North, Range 1 West, of the 4th Principal Meridian, and I re-established said corner according to the Wisconsin statutes as shown and described hereon.

Dated this 19th day of December, 2000

Larry L. Austin
Larry L. Austin S-1903



● = CORNER LOCATION

EAST 1/4 CORNER OF
SECTION 24, T 5 N R 1 W
TOWN OF CLIFTON

HISTORY OF ORIGINAL CORNER ESTABLISHMENT:

Corner was originally set in 1832 by Sibley. In 1856 Overton tied to the original corner. No other record of the corner was found.

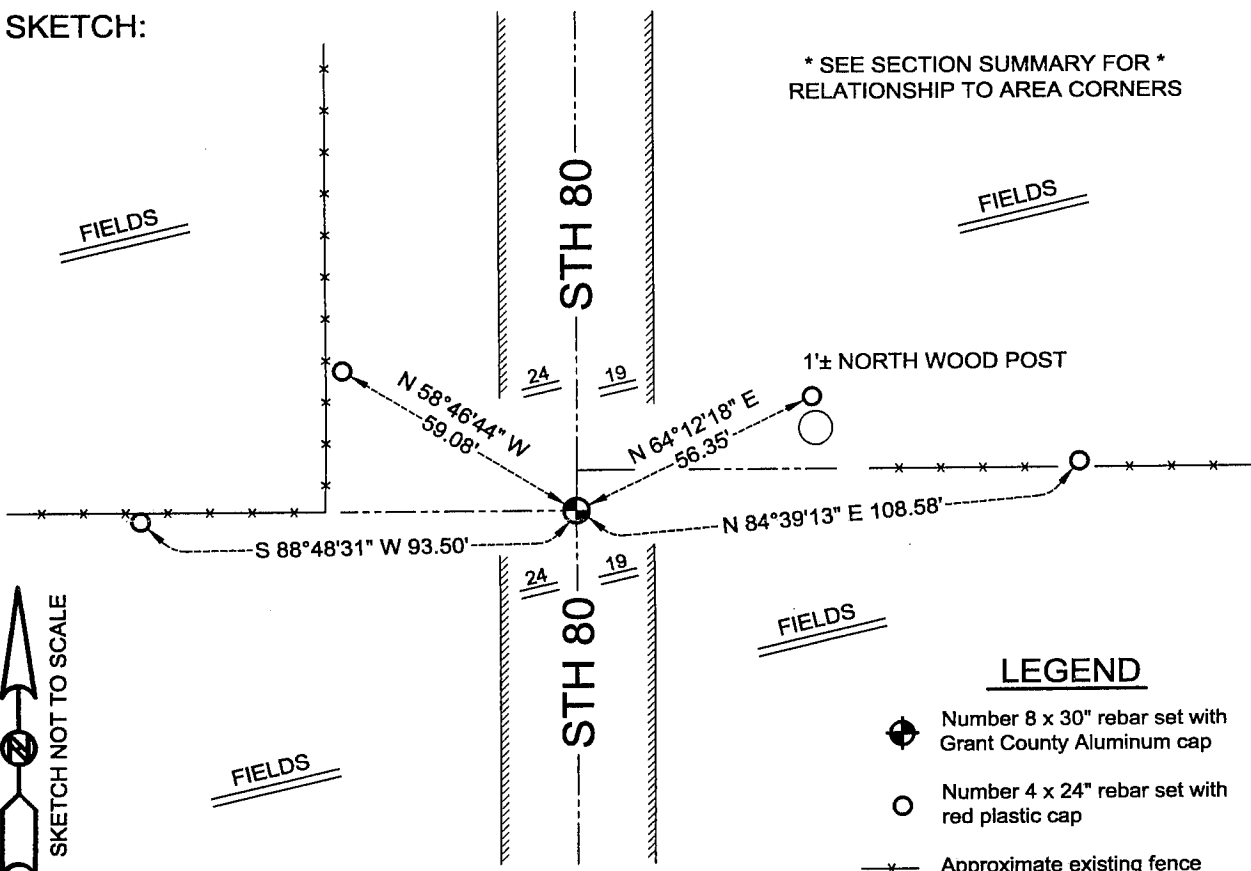
DESCRIPTION OF CORNER EVIDENCE FOUND:

I reset the corner based on an occupied location. (Centerline of STH 80 & fence West) This location was verified by EDM & GPS methods.

DESCRIPTION OF CORNER AND WITNESS MONUMENTS, references and accessories used to perpetuate the original or re-established location of this corner

WITNESS TO THE CORNER LOCATION: TIM FAUVER & SHELBY BLINDERT & BOBBY SEDGWICK

SKETCH:



LEGEND

- Number 8 x 30" rebar set with Grant County Aluminum cap
- Number 4 x 24" rebar set with red plastic cap
- *— Approximate existing fence



AUSTIN ENGINEERING, LLC
4211 HWY 81 E, LANCASTER, WI 53813
PHONE 608-723-6363 FAX 608-723-6702

FIELDBOOK: SDR33, 2033
G:\T5NR1W\36B
C:\SC14\SWA\TIE\T5NR1W\80

DRAWN BY: SW AUSTIN
APPROVED: LL AUSTIN
CREW: BS - SB - SA - TF