

U.S. PUBLIC LAND SURVEY MONUMENT RECORD

(a) Identify the corner to the U.S. Public Land Survey System.

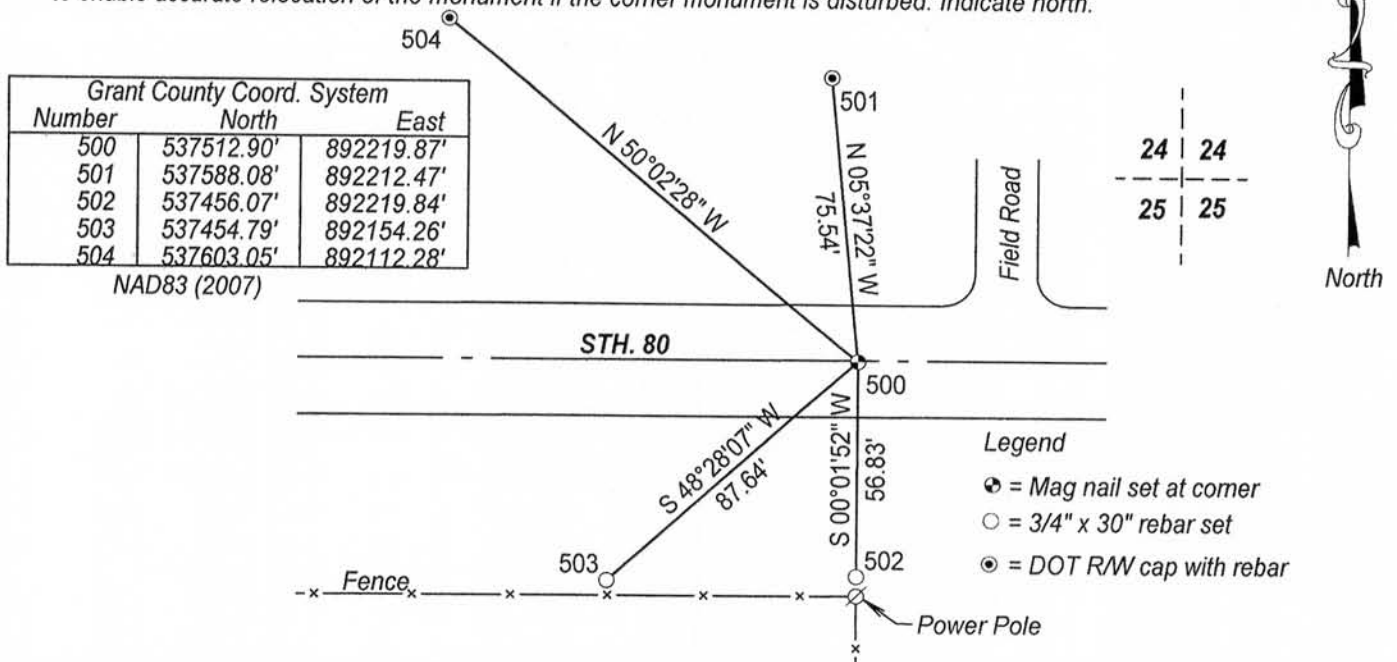
North 1/4 corner of Section 25, Town 5 North, Range 1 West, Clifton Township, Grant County, Wisconsin.

(b) Describe any record evidence, occupational evidence, testimonial evidence or any material evidence you considered, and if the monument was found or placed.

I found and accepted an aluminum monument. The aluminum monument was consistent with the location described in WiDOT Project Plat # 5035-00-21 and existing ties. After road construction, I reestablished the corner and ties as shown below.

(c) In the plan view below, provide reference ties to at least 4 witness monuments. (Witness monuments shall be made of concrete, material stone, iron or other durable material) Describe the witness monuments.

(d) Show a plan view drawing depicting the relevant monuments and reference ties which is sufficient in detail to enable accurate relocation of the monument if the corner monument is disturbed. Indicate north.



(e) Describe any material discrepancy between the location of the corner as restored and the location of that corner previously restored or reestablished by distance and direction. Show the discrepancy on the plan view drawing under (d), above. Show the distance between the corner as previously restored or reestablished and (1) the corner as restored or reestablished, and (2) to at least 2 of the witness monuments shown on the drawing above.

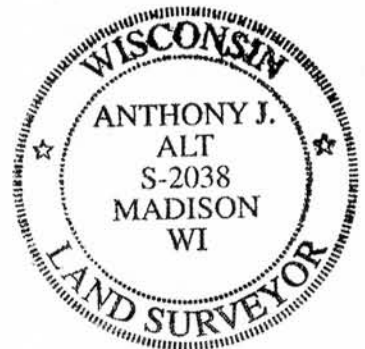
No known discrepancy.

(f, g & h) Was the corner restored through:

- (1) Acceptance of an obliterated evidence location, or
- (2) Acceptance of a found perpetuated location, or
- (3) Lost corner proportionate methods? If lost corner methods were used, show the method, including the direction and distance to other Public Land survey corners used as evidence or used for proportioning in determining the corner location.

(2) Acceptance of a found perpetuated location.

(i) I Anthony J. Alt, certify that the corner location shown on this record was determined by me or under my direction and control and that this U.S. Public Land Survey Monument is accurate and complete to the best of my knowledge and belief.



Signature Anthony J. Alt

Date 11-7-12

Affix Seal

NOV 21 2012
82

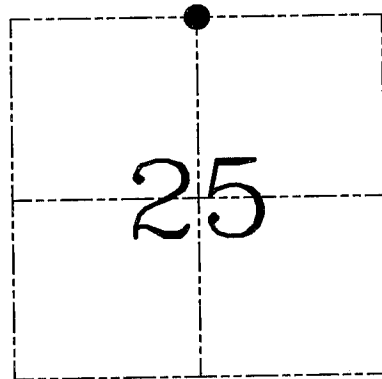
U.S. PUBLIC LAND SURVEY MONUMENT RECORD – GRANT COUNTY, WI
Section 25, Town 5 North Range 1 West, Town of Clifton

CERTIFICATE

I, Larry L. Austin, do hereby certify that the corner location on this record was determined by me and/or under my direct supervision and that this U.S. public land survey monument record is correct and complete to the best of my knowledge and belief.

Dated this 10th day of August, 2005

Larry L. Austin
 Larry L. Austin S-1903



● = CORNER LOCATION

HISTORY OF CORNER ESTABLISHMENT

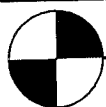
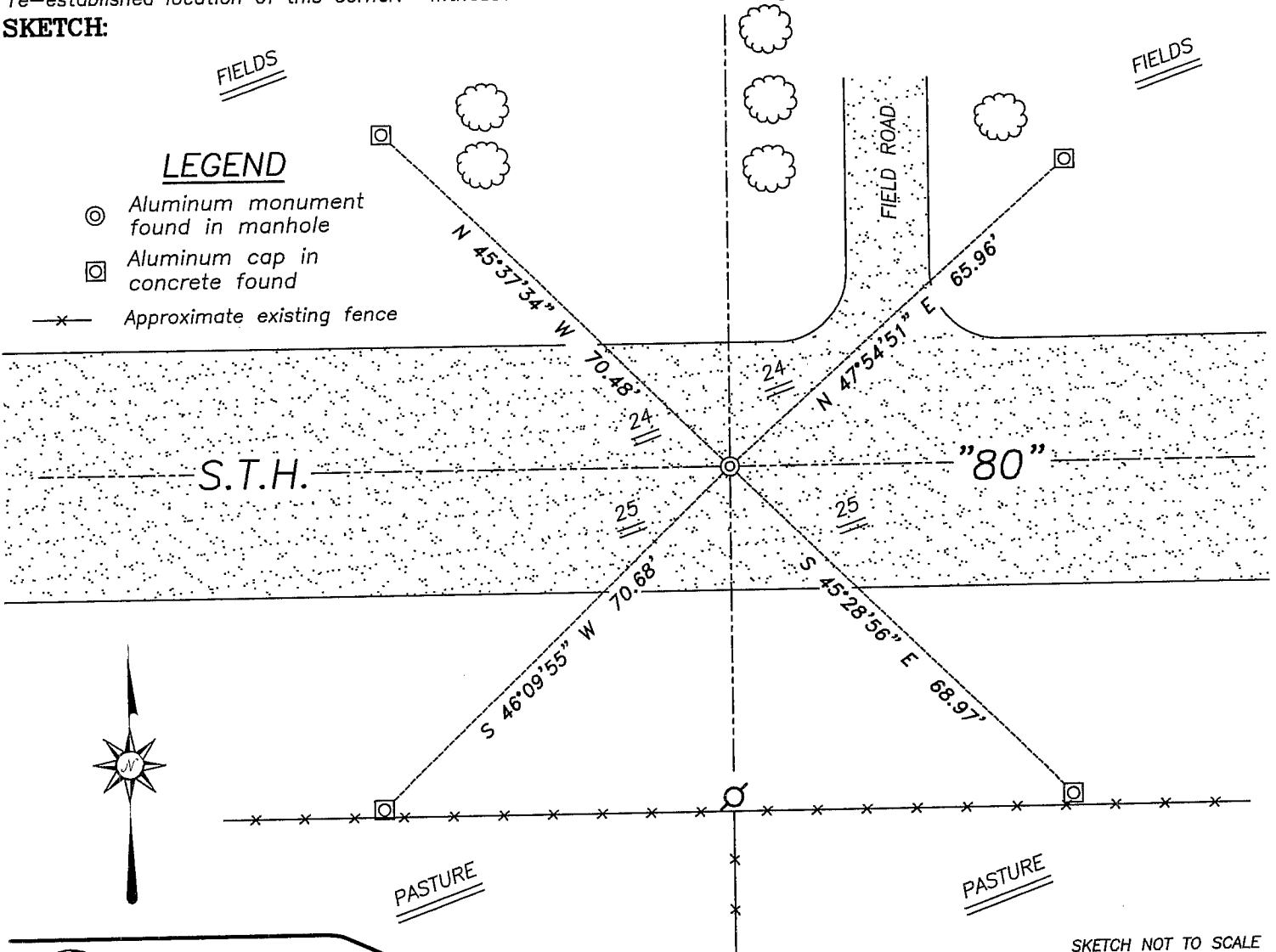
Corner was originally set in 1832 by Parke. A preservation of landmarks reference sheet was filed. Various surveys tied to the Aluminum monument in a manhole.

DESCRIPTION OF CORNER EVIDENCE FOUND

I found and accepted the Aluminum monument in a manhole and all witness monuments. I prepared a tiesheet and verified its location using EDM & GPS methods.

DESCRIPTION OF CORNER AND WITNESS MONUMENTS, references and accessories used to perpetuate the original or re-established location of this corner. Witnesses to corner location Bobby Sedgwick & Brad Digman & Shane Austin

SKETCH:



Austin Engineering LLC

4211 HWY 81 E, LANCASTER, WI 53813
 PHONE 608-723-6363 FAX 608-723-6702

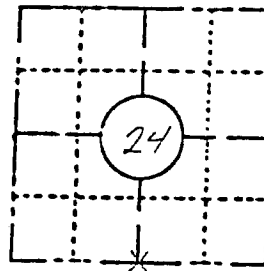
JOB NUMBER 05S050
 FIELDBOOK: TDSR, 2512
 G:\GRANTDOT\T5NR1W
 H:\TIE\T5NR1W\82

DRAWN BY: SW AUSTIN
 APPROVED: LL AUSTIN

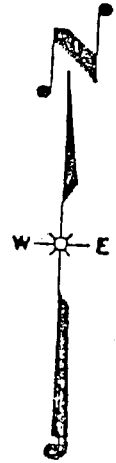
FIELD SURVEY NOTES
PRESERVATION OF LANDMARKS
 (Pursuant to Section 59.635(7) Wisconsin Statutes)

Wisconsin Highway Commission
 Form E-D-707-65

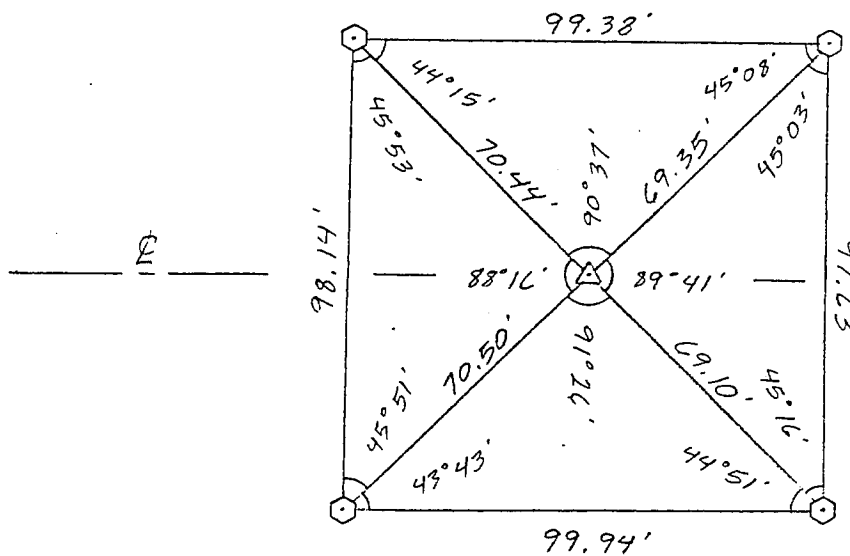
COUNTY GRANT		
TOWN CLIFTON		
HIGHWAY S.T.H. '80'		
SECTION 24	TOWNSHIP T 5 N	RANGE R 1 W
TYPE OF LANDMARK SECTION CORNER MONUMENT		



LOCATION SKETCH
 (Location of landmark indicated by "x")



This space for copy of field notes or ties to the above described landmarks



5035-00-71, 5900-00-11
 0022-74-00
 Plattville - Monument
 Water Street, Clifton
 Structures B-22
 STH 80, Grant Co.
 1980

S.T.H. '80'

SCALE
 1" = 40'

- = REFERENCE MONUMENT
- ⌋ = RIGHT OF WAY POST
- ⌋ = WITNESS POST
- △ = SECTION CORNER LOCATION

COUNTY CLERK'S OFFICE	
COUNTY OF	WISCONSIN
DATE RECEIVED FOR RECORD	DATE COPY SENT TO COUNTY SURVEYOR
SIGNATURE OF COUNTY CLERK	