

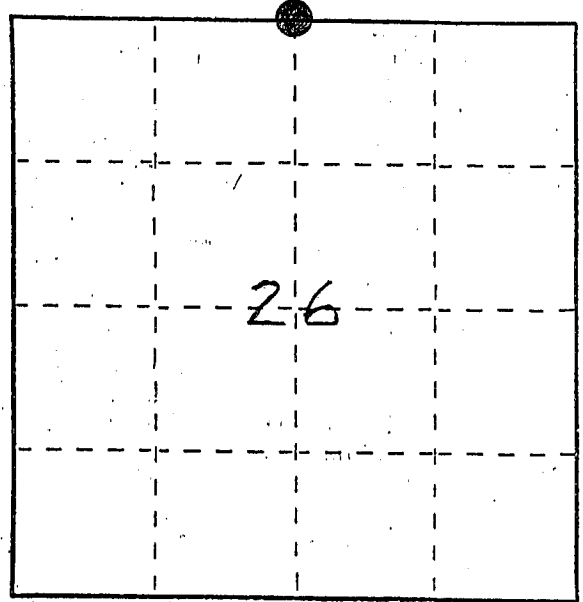
# U. S. PUBLIC LAND SURVEY MONUMENT RECORD

**INSTRUCTIONS:** This record shall show the location of the corner and shall include all of the following nine elements (a through i).

(a) Identify the corner by reference to the U.S. public land survey system.

● = Corner monument restored.

NORTH 1/4 CORNER  
SECTION 26  
TOWN 5 NORTH  
RANGE 1 WEST  
CLIFTON TOWNSHIP  
GRANT COUNTY, WI.

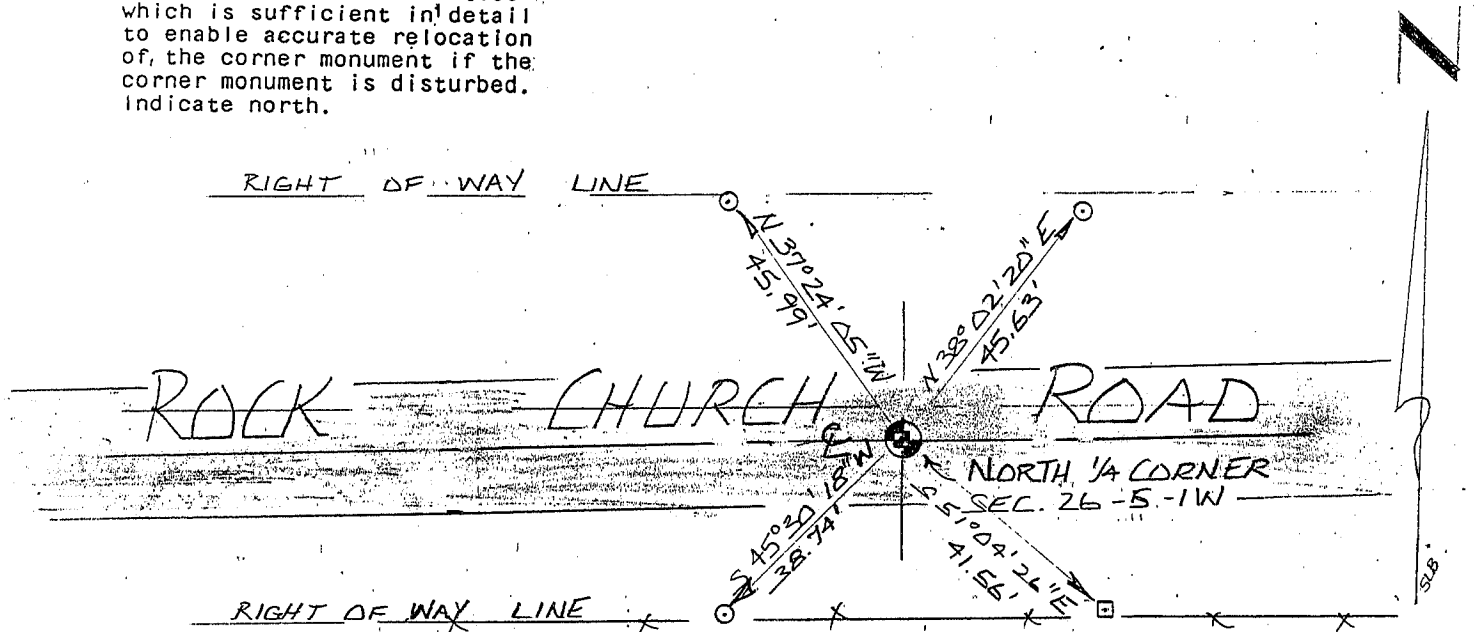


(b) Describe any record evidence, monument evidence, occupational evidence, testimonial evidence or any other material evidence you considered, and whether the monument was found or placed.

MONUMENT SET IN PLACE OF 3/4" REBAR, FOUND BENT IN PLACE, AFTER VERIFICATION BY PROPORTIONATE MEASUREMENTS FROM AN EDM SURVEY OF THE AREA.

(c) In the plan view drawing below, provide reference ties to at least 4 witness monuments, or, if the location is within a municipality, to at least 2 witness monuments. (Witness monuments shall be made of concrete, natural stone, iron or other equally durable material, ~~except~~ wood.) Describe witness monuments.

(d) Show a plan view drawing depicting the relevant monuments and reference ties which is sufficient in detail to enable accurate relocation of the corner monument if the corner monument is disturbed. Indicate north.



### LEGEND

- 1" PIPE - FOUND
- #6 x 24" REBAR - SET
- #10 x 30" REBAR - SET
- x-x- FENCE LINE

SCALE: 1" = 30'

(e) Describe any material discrepancy between the location of the corner as restored or reestablished and the location of that corner as previously restored or reestablished by distance and direction. Show the discrepancy on the plan view drawing under (d), above. Show the distances between the corner as previously restored or reestablished and (1) the corner as restored or reestablished, and (2) to at least 2 of the witness monuments shown on the drawing in (d), above.

NO.

(f) Was the corner restored through acceptance of (1) an obliterated evidence location, or, (2) a found perpetuated location?

2) A FOUND PERPETUATED LOCATION.

(g&h) Was the corner reestablished through lost corner proportionate methods? If so, show the method, including the directions and distances to other public land survey corners used as evidence or used for proportioning in determining the corner location?

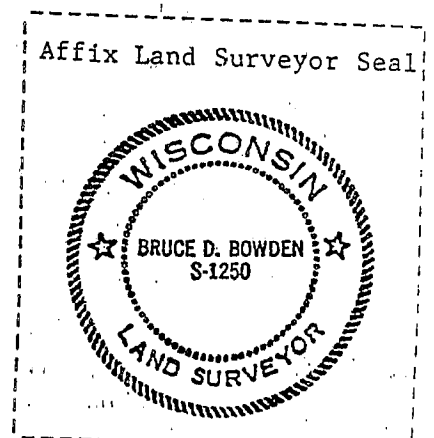
NONE

(i) I, BRUCE D. BOWDEN,

(type or print name) certify that the corner location shown on this record was determined by me or under my direction and control and that this U.S. Public Land Survey Monument Record is correct and complete to the best of my knowledge and belief.

Bruce D. Bowden  
Signature

July 2, 1996  
Date

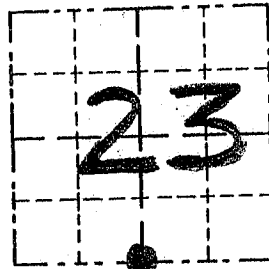


# GRANT COUNTY

## Survey Monument Record

TYPE OF MONUMENT 3/4" IRON BAR SET  
STATE PLANE COORDINATES: N \_\_\_\_\_  
E \_\_\_\_\_  
ELEVATION — M.S.L. DATUM: \_\_\_\_\_  
THETA ANGLE: \_\_\_\_\_  
FIELD BOOK: 9411  
PAGE: 23

CORNER NO. 84  
SECTION 23  
TOWN 5 N  
RANGE 1 W



LOCATION  
(Indicated by "•")

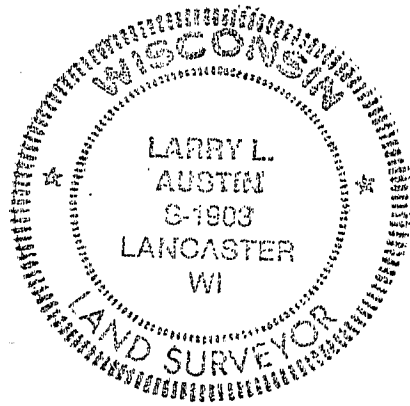
### BASIS FOR MONUMENT LOCATION

(Use reverse side if necessary)

Show info such as: History of corner, with reference to Vol. and pg., dates, surveyor; exact description of monument replaced; if location computed, by taped or EDM traverse; landowner, remarks, etc.

SEAL:

NO RECORD FOUND OF CORNER SINCE ORIGINAL SURVEYS; CORNER SET MIDWAY BETWEEN SE & SW COR OF SEC. 23; VERIFIED BY EDM TRAVERSE OF THE AREA.



CERTIFIED CORRECT

Larry L. Austin  
Registered Land Surveyor

DATE: 7/29/94

### TIE SKETCH

Show at least three (3) ties and monument

