

U.S. PUBLIC LAND SURVEY MONUMENT RECORD

(As Required By s. A-E 7.08, WI Adm. Code)

History of original corner establishment and subsequent restorations and description of any record, monument, occupational, testimonial or other evidence considered: *I found no recent records of the actual corner. Ownership records indicate that the corner was occupied until a couple of generations ago. A north-south road was moved westerly to create an intersection near the corner. I restored the corner by a double proportion but this location also best fit occupational evidence measured to the west and north. See section summary sheet (this date) for relationships. A nail & shiner found in the intersection was used for calculations but not accepted as the corner.*

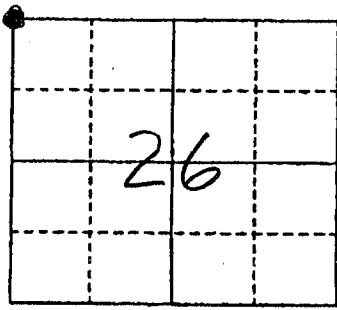
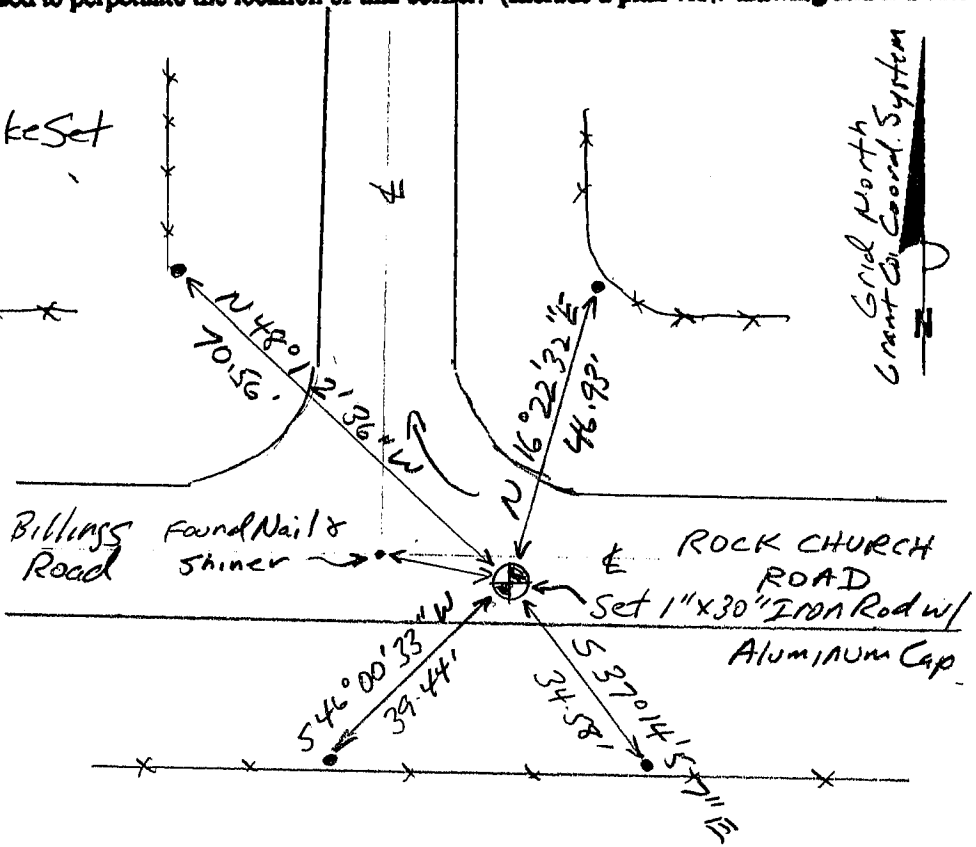
Corner was: (Check All That Apply)

- Restored through acceptance of an obliterated evidence location
- Restored through acceptance of a found perpetuated location
- Considered a lost corner and reestablished through lost corner proportionate methods (include a plan view drawing showing distances and directions to other Public Land Survey Corners used for proportioning and determining the corner location)
- Restored or reestablished in a location that differs from a previous restoration or reestablishment (include a plan view drawing and indicate what was set and/or found)

Describe the monument and accessories used to perpetuate the location of this corner. (Include a plan view drawing and indicate what was set and/or found)

Legend *xx* - fence
 • Landscape Spike Set
 1" = 30' +/-

The NW
 corner of Section 26
 T. 5 N., R. 1 W.
Grant County, Wisconsin
 Job ID: 2005-62
 Book # 9



Grant Co. Coords.
 (N) 537566.74
 (E) 884190.74

LAND SURVEYOR'S SEAL

● - Location of Corner

Michael R. LaRosa
 Type or print name) certify that the corner location shown on this record was determined by me or under my direction and control and that this U.S. Public Land Survey Monument Record is correct and complete to the best of my knowledge and belief.
Michael R. LaRosa 9/28/2005
 Signature Date

Index No. 85