

U.S. PUBLIC LAND SURVEY MONUMENT RECORD - GRANT COUNTY, WI

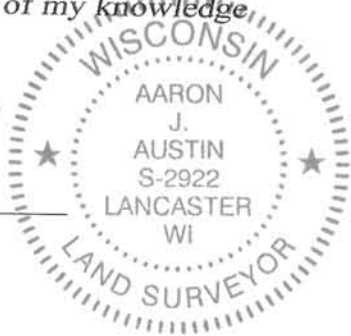
Section 18, Town 5 North Range 1 West, Town of Clifton

CERTIFICATE:

I, Aaron J. Austin, do hereby certify that the corner location on this record was determined by me and/or under my direct supervision and that this U.S. Public Land Survey Monument Record is correct and complete to the best of my knowledge and belief.

Dated this 3rd day of July, 2014.

Aaron J. Austin
 Aaron J. Austin, S-2922



● = CORNER LOCATION

HISTORY OF CORNER ESTABLISHMENT:

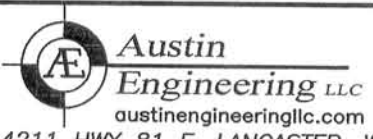
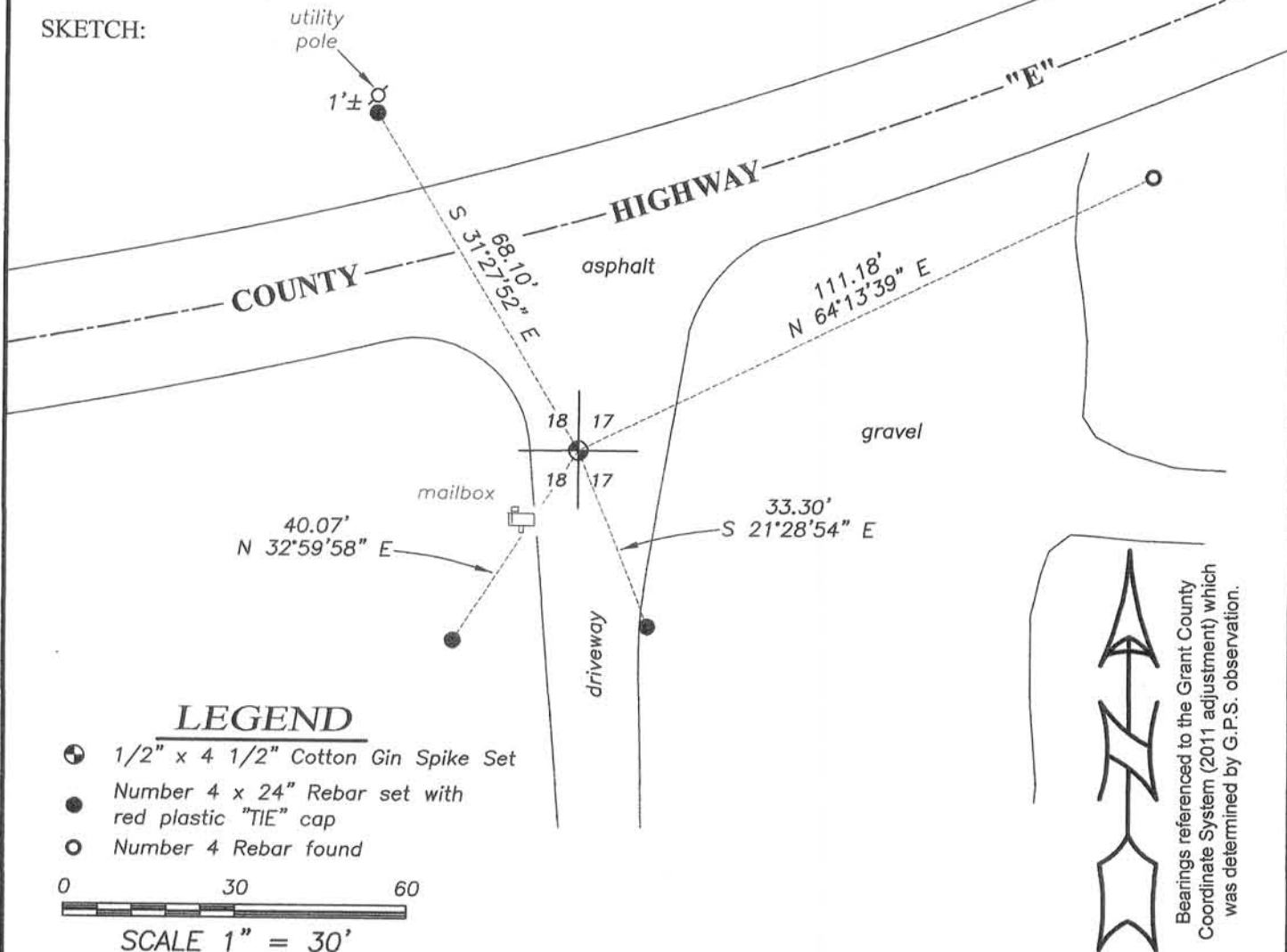
1832 Henry Park set original corner.
 1995 Michael LaRosa reset this corner and prepared a Survey Monument Record for a Survey filed in Book W, Page 30.
 No other record was found for this corner.

DESCRIPTION OF CORNER EVIDENCE FOUND:

I found 1 tie and had a metal detector reading under a new asphalt driveway at a previously measured location for this corner. I set a Cotton Gin Spike at the surface after I verified this location from previous measurements taken to this corner by Larry Austin Surveys filed in Book 5, Page 24 and a Survey in Book 11, Page 83. I set 3 new ties and verified it's location by E.D.M. and G.P.S. methods.

DESCRIPTION OF CORNER AND WITNESS MONUMENTS, references and accessories used to perpetuate the original or re-established location of this corner. Witnesses to corner location Shane Austin

SKETCH:



JOB NO: 14s055
 G:\14s055
 H:\TIE\T5NR1W\55

FIELDBOOK: TDSR
 DRAWN BY: AJ AUSTIN
 CREW: SW AUSTIN

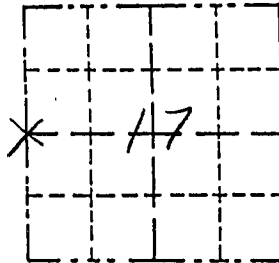
4211 HWY 81 E, LANCASTER, WI 53813
 PHONE: 608-723-6363 FAX: 608-723-6702

JUL 09 2014

Survey Monument Record

TYPE OF MONUMENT 1" Iron Pipe
 STATE PLANE COORDINATES: N _____
 E _____
 ELEVATION — M.S.L. DATUM: _____
 THETA ANGLE: _____
 FIELD BOOK: 95-9
 PAGE: 955-309, 347

CORNER NO. _____
 SECTION 17
 TOWN 5N
 RANGE 1W



LOCATION
 (Indicated by "X")

- FOUND PERPETUATED LOCATION
- OBLITERATED EVIDENCE LOCATION
- LOST CORNER (RESTORED BY PROPORTIONATE METHODS)

BASIS FOR MONUMENT LOCATION

(Use reverse side if necessary)

Show info such as: History of corner, with reference to Vol. and pg., dates, surveyor; exact description of monument replaced; if location computed, by taped or EDM traverse; landowner, remarks, etc.

The most recent survey record of this corner is an 1852 survey. Plat records indicate that a town road ran several hundred feet down (south) this line since the late 1800's and that the southerly part of the west line of the SW 1/4 has been maintained (with fences) since then. A long standing fence line extends east from the corner. The restored corner location was computed by the projection of the fence from the south and the fence from the east. It fell in the center of a gravel drive to south and is in line with C.T.H.E to the west. (SEE PLAT OF SURVEY FOR ARNIE ROEPER, DAVID RUNDLEY & PAT GRISWOLD FOR SECTION SUMMARY)

CERTIFIED CORRECT TO THE BEST OF MY KNOWLEDGE AND BELIEF

Michael R. LaRosa
 Registered Land Surveyor

DATE: 11/6/1955

TIE SKETCH

Show at least three (4) ties and monument

