

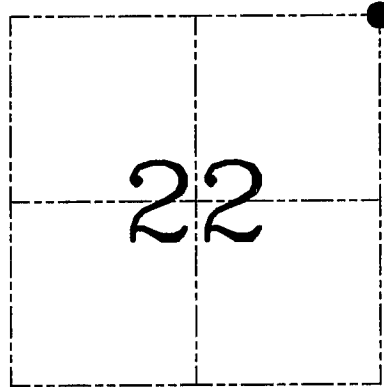
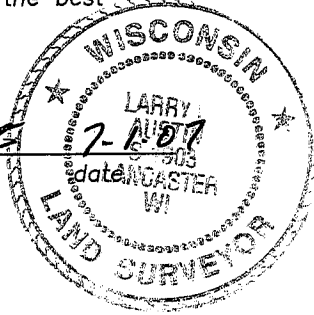
U.S. PUBLIC LAND SURVEY MONUMENT RECORD – GRANT COUNTY, WI

Section 22, Town 5 North Range 1 West, Town of Clifton

CERTIFICATE

I, Larry L. Austin, do hereby certify that the corner location on this record was determined by me and/or under my direct supervision and that this U.S. public land survey monument record is correct and complete to the best of my knowledge and belief.

Larry L. Austin
 Larry L. Austin, S-1903



● = CORNER LOCATION

HISTORY OF CORNER ESTABLISHMENT

Corner was originally set in 1832 by Parke. Stuntz, Barber, and Sampson tied to the corner. Stampson found a Stone set by Barber. No other record of the corner was found.

DESCRIPTION OF CORNER EVIDENCE FOUND

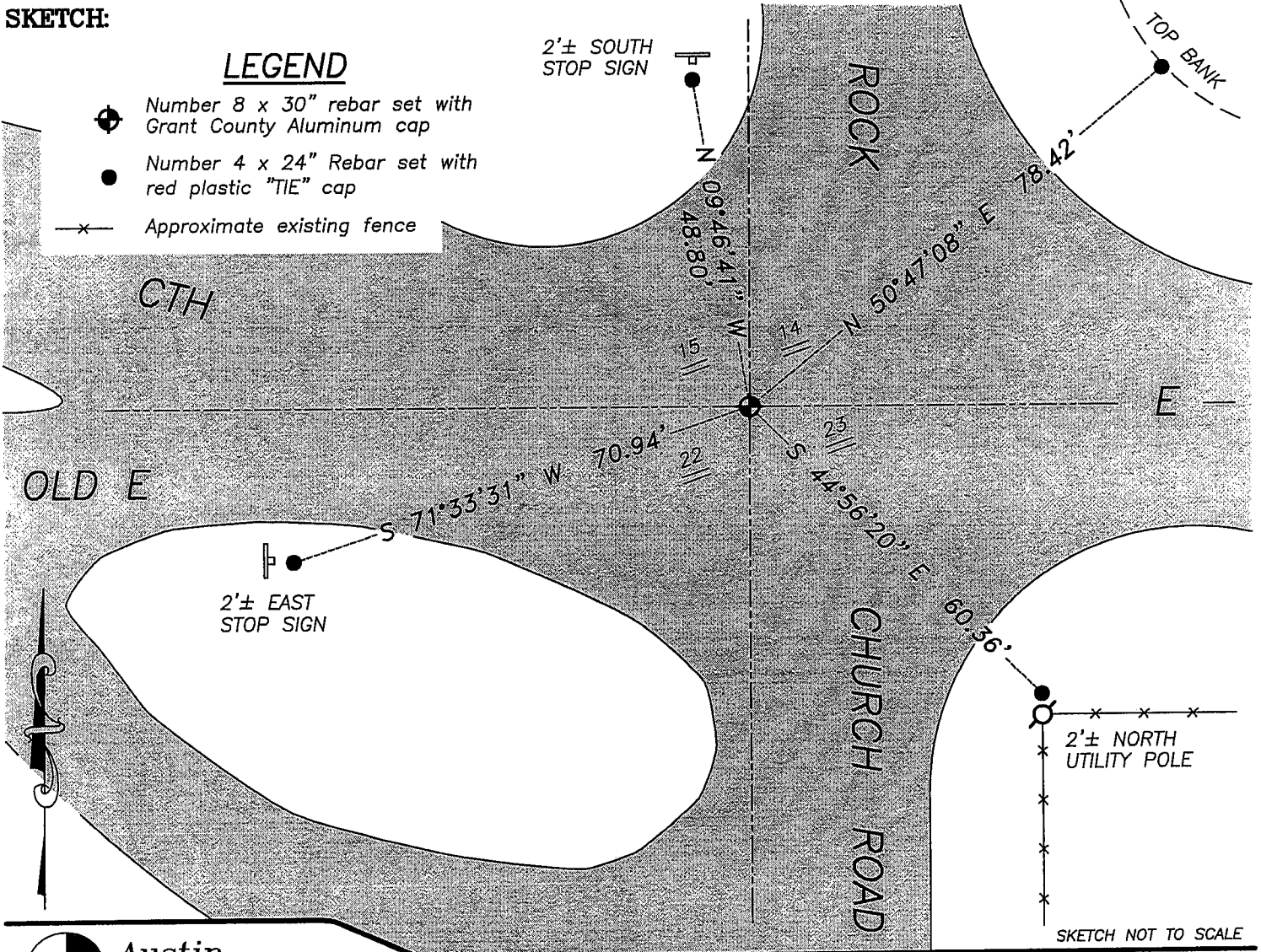
I was unable to locate the Stone due to existing roads in the area of the corner. I reset the corner by doubling the North line of the NW 1/4 of the NE 1/4 of Section 22 to the East. This location fit occupational and monumented evidence in the area very well. Verified this location using EDM & GPS methods.

DESCRIPTION OF CORNER AND WITNESS MONUMENTS, references and accessories used to perpetuate the original or re-established location of this corner. Witnesses to corner location Bobby Sedgwick & Brad Digman & Shelby Blindert

SKETCH:

LEGEND

- Number 8 x 30" rebar set with Grant County Aluminum cap
- Number 4 x 24" Rebar set with red plastic "TIE" cap
- x— Approximate existing fence



SKETCH NOT TO SCALE



Austin Engineering LLC

4211 HWY 81 E, LANCASTER, WI 53813
 PHONE 608-723-6363 FAX 608-723-6702

JOB NUMBER 07S071
 FIELDBOOK: TDSR, 2701
 G:\T5NR1W\32
 H:\TIE\T5NR1W\65

DRAWN BY: SW AUSTIN
 APPROVED: LL AUSTIN