

# CERTIFIED LAND CORNER

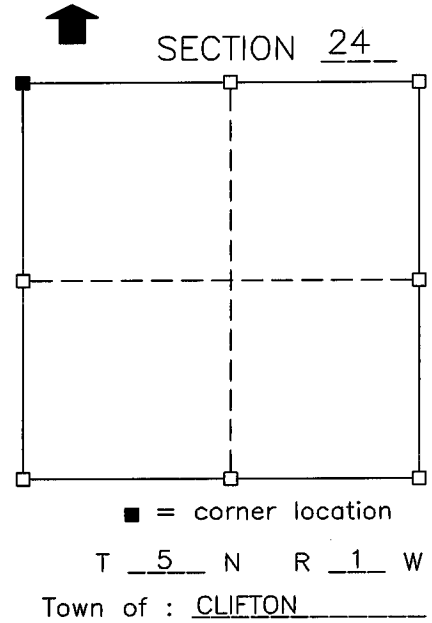
( STATE OF WISCONSIN )  
 ( COUNTY OF GRANT ) S.S.

## CERTIFICATE

I, Stanley King, do hereby certify that on the 11TH day of NOV. 1998, I found (evidence) (~~no evidence~~) of the NW corner of SECTION 24, T 5 N, R 1 W, Fourth Principal Meridian, and I re-established said corner according to the Wisconsin Statutes as shown and described hereon.

Dated this 24TH day of FEB. 1999

Stanley King  
 REGISTERED LAND SURVEYOR, S-2001

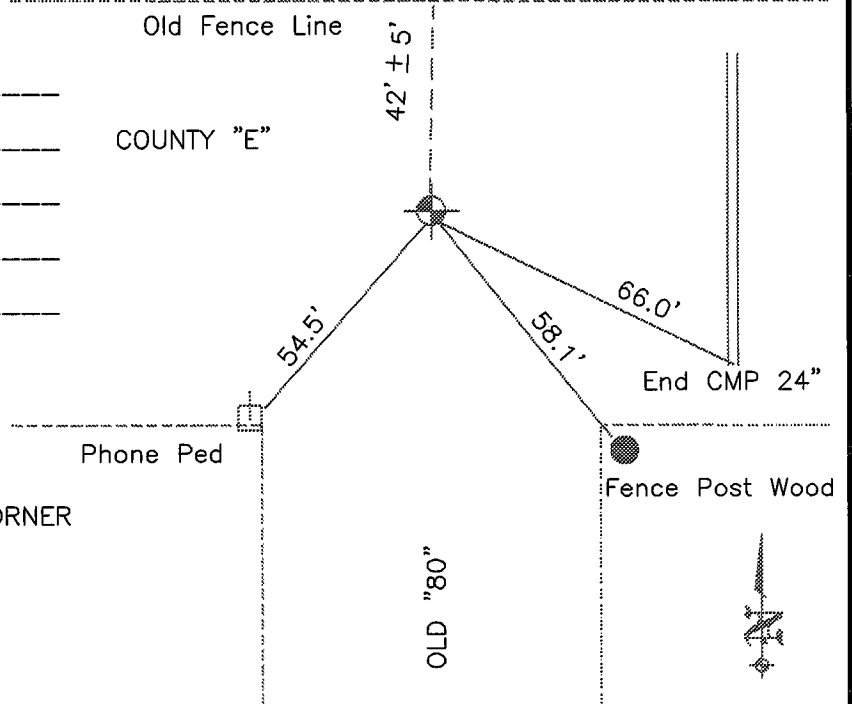


History of original corner establishment: Reset corner from previous surveys completed prior to corner being destroyed from road construction.

Description of corner evidence found:

Description of corner and witness monuments, references and accessories used to perpetuate the original or re-established location of this corner: Sketch:

Witnesses to corner location:  
 BRAD J. HAZEN  
 MICHAEL M. MILLER



SET A 3/4" X 24"  
 SOLID ROUND IRON ROD AT THE CORNER

### SURVEY CONTROL ORDER

Horizontal				
Vertical				
Corner	East (X)	North (Y)	Elevation (Z)	Zone
Control sta. Name				