

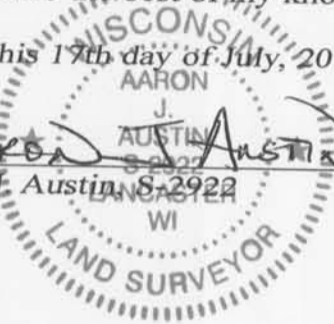
U.S. PUBLIC LAND SURVEY MONUMENT RECORD - GRANT COUNTY, WI
 Section 24, Town 5 North Range 1 West, Town of Clifton

CERTIFICATE:

I, Aaron J. Austin, Wisconsin Professional Land Surveyor, do hereby certify that the corner location on this record was determined by me and/or under my direct supervision and that this U.S. Public Land Survey Monument Record is correct and complete to the best of my knowledge and belief.

Dated this 17th day of July, 2015.

Aaron J. Austin
 Aaron J. Austin, S-2922
 Lancaster, WI



● = CORNER LOCATION

HISTORY OF CORNER ESTABLISHMENT:

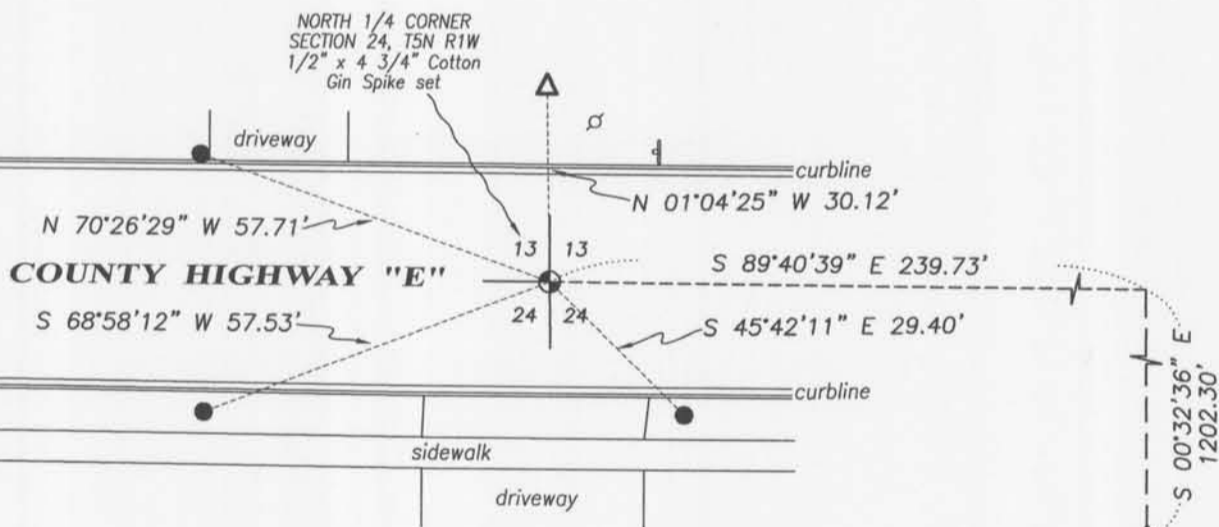
1832 Henry Parke set original corner.
 2000-Michael LaRosa prepared a U.S. Public Land Survey Monument Record for this corner.
 2003-Bruce Bowden prepared a U.S. Public Land Survey Monument Record for this corner.

DESCRIPTION OF CORNER EVIDENCE FOUND:

No monument was found. It appears it was removed during road construction. I reset a 1/2" x 4 3/4" Steel Cotton Gin Spike based upon 1 found witness corner and measurements to monuments found from Lot 1 of C.S.M. No. 1228. I set 3 additional witness corners and verified this location with G.P.S. and E.D.M. methods.

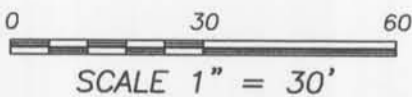
DESCRIPTION OF CORNER AND WITNESS MONUMENTS, references and accessories used to perpetuate the original or re-established location of this corner. Witnesses to corner location Shane Austin and Brandon Austin.

SKETCH:



LEGEND

- ⊕ Section Corner - as delineated
- Number 4 x 24" Rebar set with red plastic "TIE" cap
- △ 2" diameter iron pipe found
- ⊘ Existing utility pole
- ⊥ Existing sign



4211 HWY 81 E, LANCASTER, WI 53813
 PHONE: 608-723-6363 FAX: 608-723-6702

JOB NO: 15s129
 H:CRD\15s129
 H:\TIE\T5NR1W\62

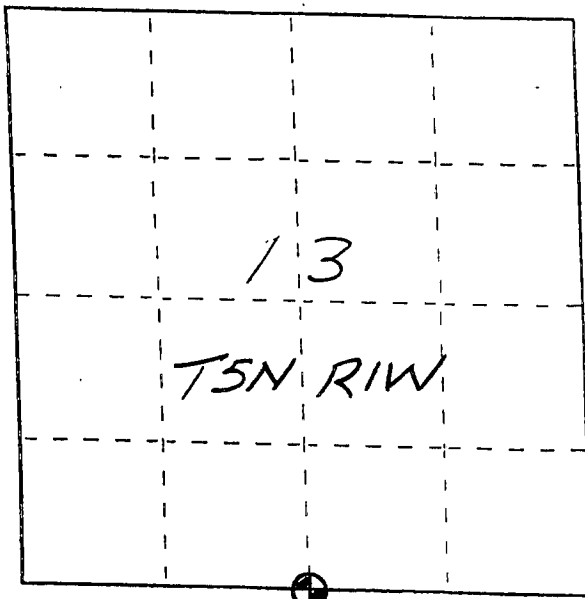
FIELDBOOK: TDSR
 DRAWN BY: AJ AUSTIN
 CREW: SW AUSTIN, BL AUSTIN

U. S. PUBLIC LAND SURVEY MONUMENT RECORD

INSTRUCTIONS: This record shall show the location of the corner and shall include all of the following nine elements (a through i).

- (a) Identify the corner by reference to the U.S. public land survey system.
- = .Corner monument restored.

The South Quarter corner
 of Section 13,
 Town 5 North, Range 1 West
 Clifton Township,
 Grant County, WI



Grant County Coordinates

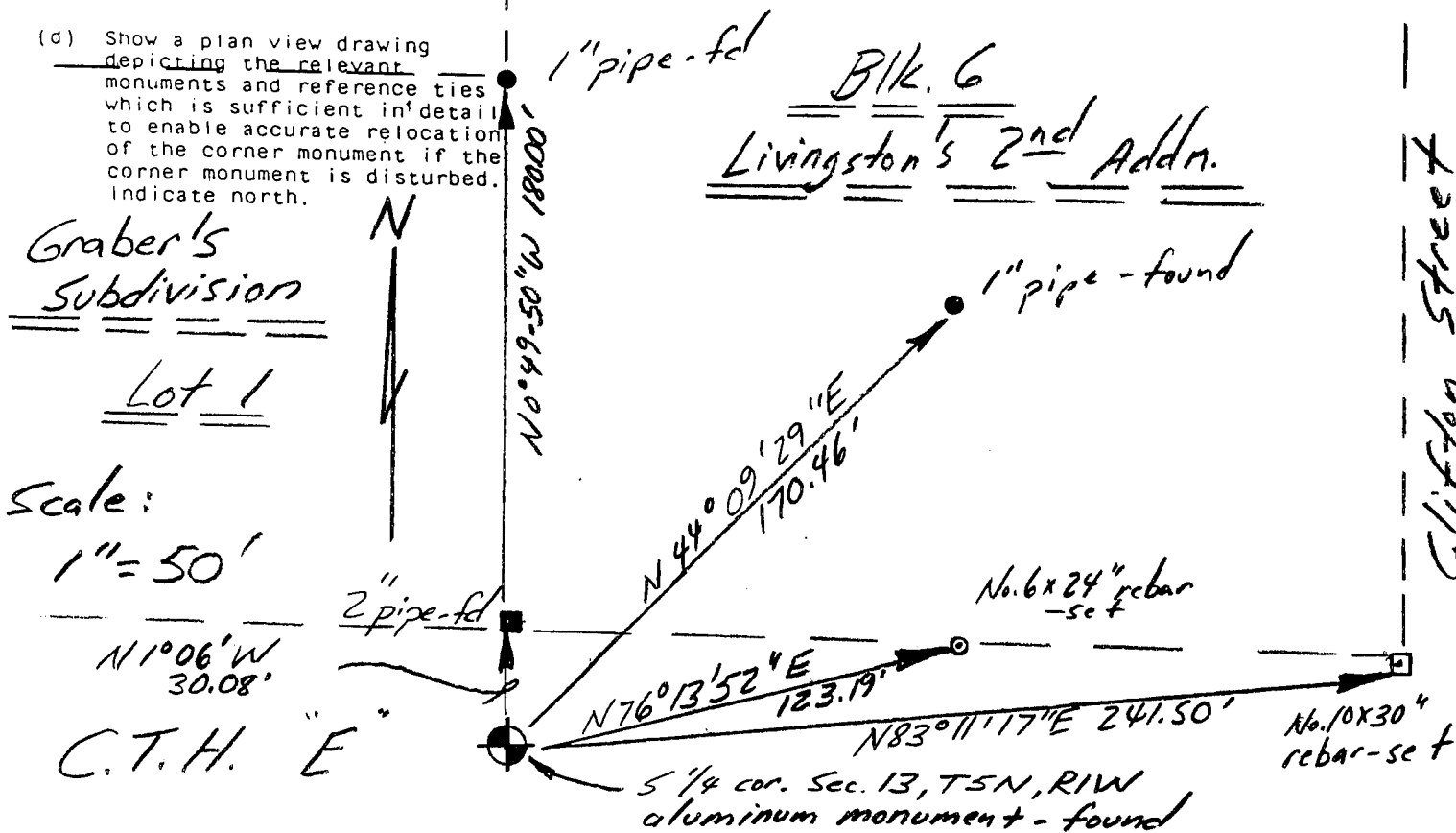
N = 542,841.1'
 E = 892,148.6'

- (b) Describe any record evidence, monument evidence, occupational evidence, testimonial evidence or any other material evidence you considered, and whether the monument was found or placed.

An aluminum monument was found and accepted as the corner as shown on the Plat of Graber's subdivision by John Orth.

- (c) In the plan view drawing below, provide reference ties to at least 4 witness monuments, or, if the location is within a municipality, to at least 2 witness monuments. (Witness monuments shall be made of concrete, natural stone, iron or other equally durable material. Describe witness monuments.)

- (d) Show a plan view drawing depicting the relevant monuments and reference ties which is sufficient in detail to enable accurate relocation of the corner monument if the corner monument is disturbed. Indicate north.



- (e) Describe any material discrepancy between the location of the corner as restored or reestablished and the location of that corner as previously restored or reestablished by distance and direction. Show the discrepancy on the plan view drawing under (d), above. Show the distances between the corner as previously restored or reestablished and (1) the corner as restored or reestablished, and (2) to at least 2 of the witness monuments shown on the drawing in (d), above.

None

- (f) Was the corner restored through acceptance of (1) an obliterated evidence location, or, (2) a found perpetuated location?

2) A found, perpetuated location

- (g&h) Was the corner reestablished through lost corner proportionate methods? If so, show the method, including the directions and distances to other public land survey corners used as evidence or used for proportioning in determining the corner location?

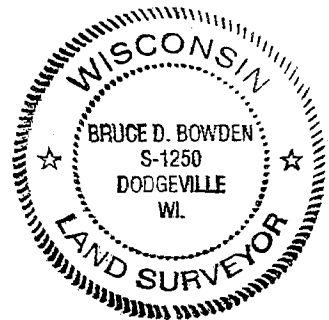
No.

- (1) I, Bruce D. Bowden, R.L.S. -1250
(type or print name) certify that the corner location shown on this record was determined by me or under my direction and control and that this U.S. Public Land Survey Monument Record is correct and complete to the best of my knowledge and belief.

Bruce D. Bowden
Signature

Feb 21, 2003
Date

Affix Land Surveyor Seal



U.S. PUBLIC LAND SURVEY MONUMENT RECORD

(As Required By s. A-E 7.08, WI Adm. Code)

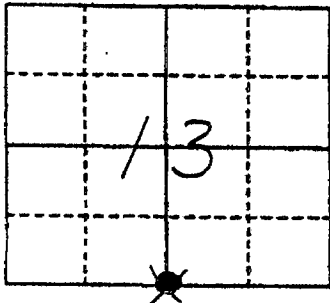
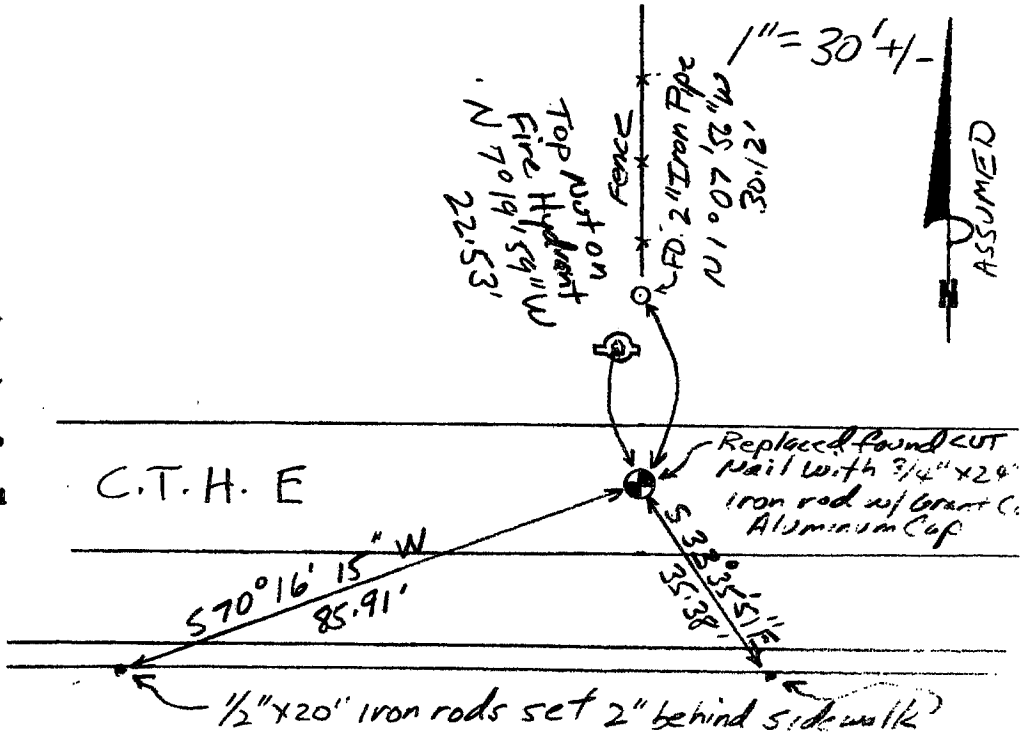
History of original corner establishment and subsequent restorations and description of any record, monument, occupational, testimonial or other evidence considered: *This corner was noted in at least 2 record surveys from the 1990's. A found CUT Nail at the corner was replaced with a 3/4" x 24" rebar with Aluminum Grant County cap.*

Corner was: (Check All That Apply)

- Restored through acceptance of an obliterated evidence location
- Restored through acceptance of a found perpetuated location
- Considered a lost corner and reestablished through lost corner proportionate methods (include a plan view drawing showing distances and directions to other Public Land Survey Corners used for proportioning and determining the corner location)
- Restored or reestablished in a location that differs from a previous restoration or reestablishment (include a plan view drawing and indicate what was set and /or found)

Describe the monument and accessories used to perpetuate the location of this corner. (Include a plan view drawing and indicate what was set and/or found)

The 5 1/4
 corner of Section 13
 T. 5 N., R. 1 W.,
Grant County, Wisconsin
 Job ID: 2000-35
 Book # 2

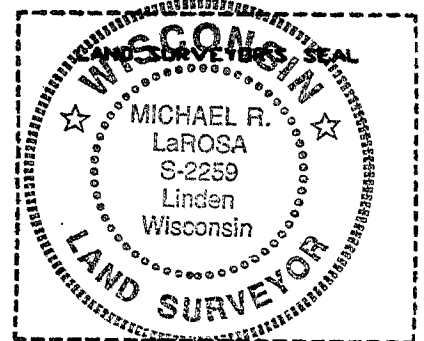


● = Location of Corner

I, Michael R LaRosa

Type or print name certify that the corner location shown on this record was **ACCEPTED** determined by me or under my direction and control and that this U.S. Public Land Survey Monument Record is correct and complete to the best of my knowledge and belief.

Michael R. LaRosa 9/19/2000
 Signature Date



Index No. _____