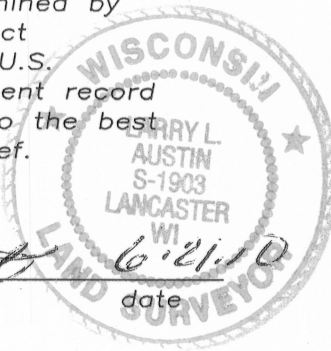


U.S. PUBLIC LAND SURVEY MONUMENT RECORD

Section 13, Town 5 North Range 1 West, Town of Clifton, Grant County, Wisconsin

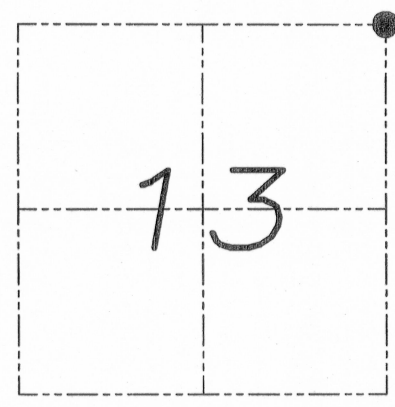
CERTIFICATE

I, Larry L. Austin, do hereby certify that the corner location on this record was determined by me and/or under my direct supervision and that this U.S. public land survey monument record is correct and complete to the best of my knowledge and belief.



Larry L. Austin
 Larry L. Austin, S-1903

6.21.10
 date



● = CORNER LOCATION

HISTORY OF CORNER

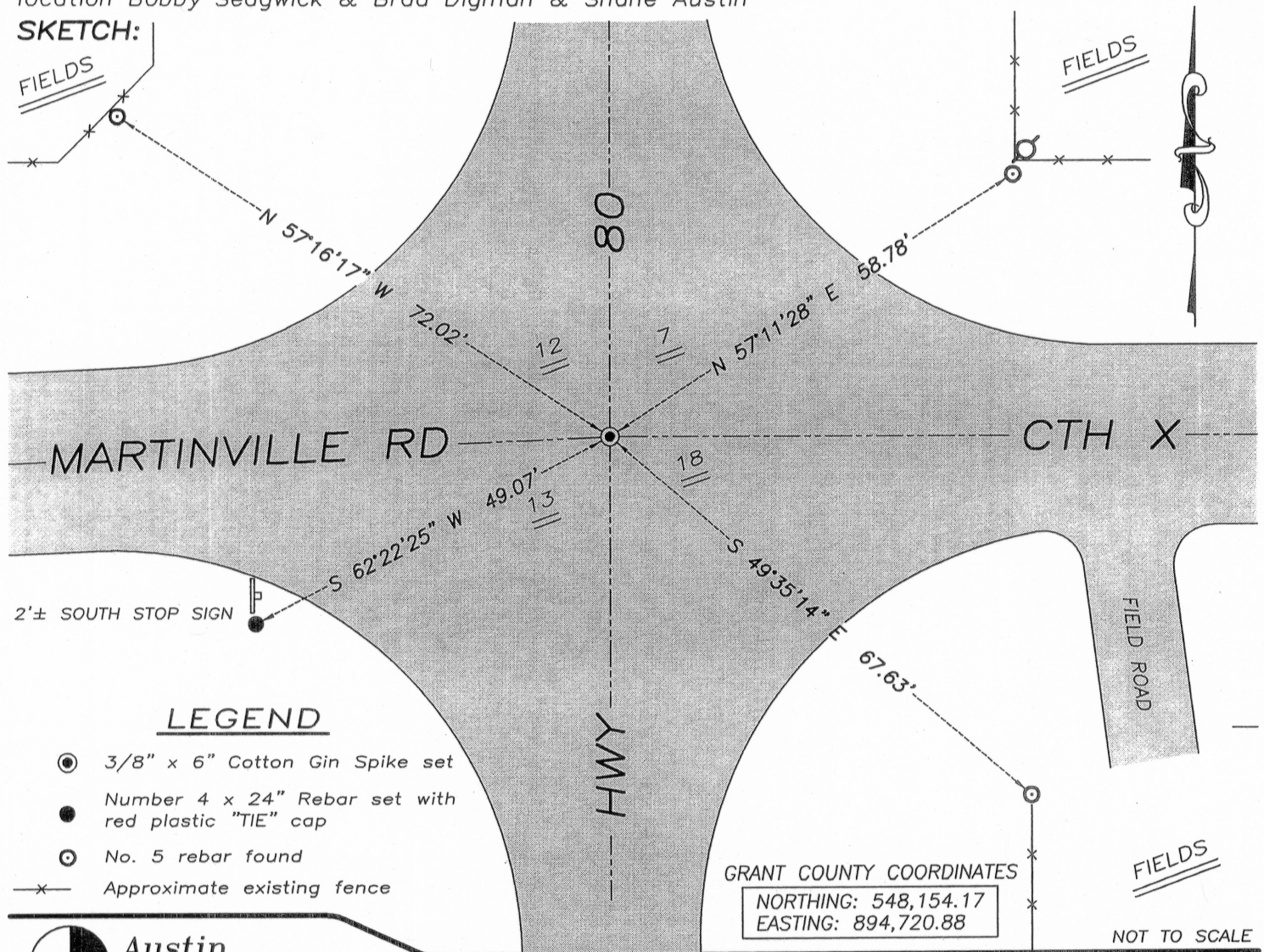
Corner was originally set in 1832 by Lyon. In 2007 Halverson found a 1.25" iron pipe and accepted it at this location. No other record of the corner was found.

CORNER EVIDENCE FOUND

I measured to the 1.25" iron pipe prior to road construction. I reset the corner after road construction and tied it as shown below. Verified this location using EDM & GPS methods.

DESCRIPTION OF CORNER AND WITNESS MONUMENTS, references and accessories used to perpetuate the original or re-established location of this corner. Witnesses to monument location Bobby Sedgwick & Brad Digman & Shane Austin

SKETCH:



LEGEND

- 3/8" x 6" Cotton Gin Spike set
- Number 4 x 24" Rebar set with red plastic "TIE" cap
- No. 5 rebar found
- x- Approximate existing fence

GRANT COUNTY COORDINATES
 NORTHING: 548,154.17
 EASTING: 894,720.88

NOT TO SCALE

Austin Engineering LLC
 4211 HWY 81 E, LANCASTER, WI 53813
 PHONE 608-723-6363 FAX 608-723-6702

JOB NUMBER 08S249-WIDOT
 FIELDBOOK: TDSR, 2810-B
 G:\GRANTDOT\T5NR1W
 H:\TIE\T5NR1W\41
 DRAWN BY: SW AUSTIN
 APPROVED: LL AUSTIN

JUN 28 2010