

# GRANT COUNTY CERTIFIED LAND CORNER

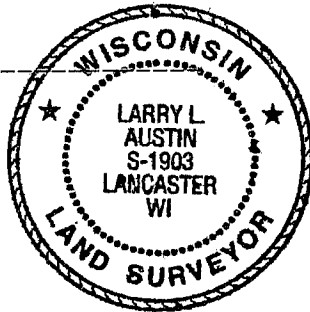
CORNER NUMBER 38

**CERTIFICATE:**

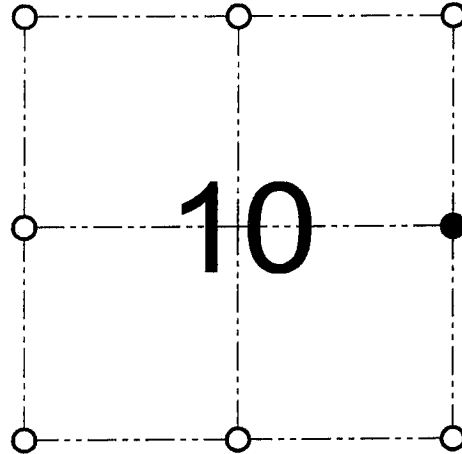
I, Larry L. Austin, do hereby certify that on the 5th day of December, 2000, I found no evidence of the East 1/4 corner of Section 10, Town 5 North, Range 1 West, of the 4th Principal Meridian, and I re-established said corner according to the Wisconsin statutes as shown and described hereon.

Dated this 29th day of January, 2001

*Larry L. Austin*  
Larry L. Austin S-1903



SEAL



● = CORNER LOCATION  
EAST 1/4 CORNER OF SECTION 10, T 5 N R 1 W TOWN OF CLIFTON

**HISTORY OF ORIGINAL CORNER ESTABLISHMENT:**

Corner was originally set in 1832 by Harvey Parke.  
In 1840 Geo Stuntz found the original corner.

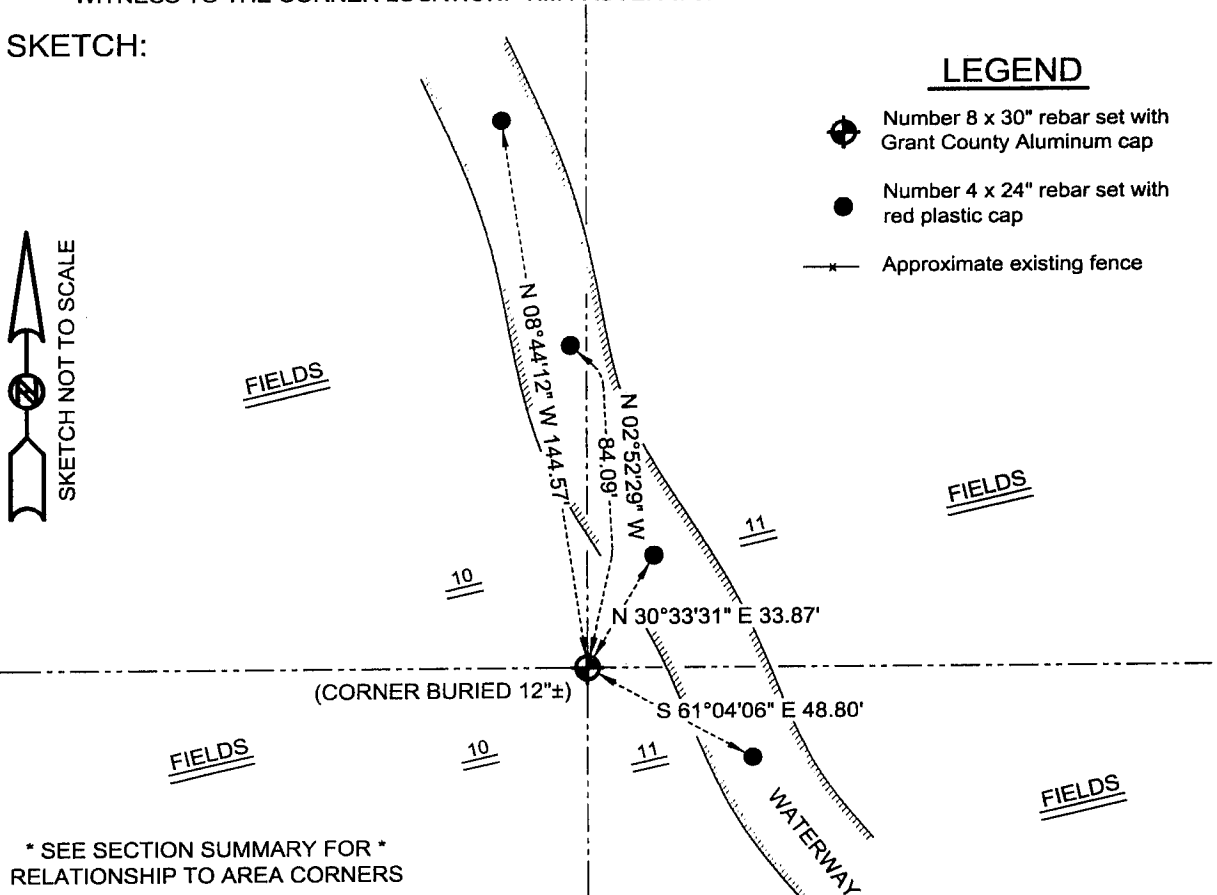
**DESCRIPTION OF CORNER EVIDENCE FOUND:**

I found no evidence of the corner. I reset the corner proportionately between the Northeast and Southeast corners of Section 10. Verified this location using EDM & GPS methods.

**DESCRIPTION OF CORNER AND WITNESS MONUMENTS, references and accessories used to perpetuate the original or re-established location of this corner**

WITNESS TO THE CORNER LOCATION: TIM FAUVER & SHELBY BLINDERT & BOBBY SEDGWICK

**SKETCH:**



\* SEE SECTION SUMMARY FOR \*  
RELATIONSHIP TO AREA CORNERS

**AUSTIN ENGINEERING, LLC**  
4211 HWY 81 E, LANCASTER, WI 53813  
PHONE 608-723-6363 FAX 608-723-6702

FIELDBOOK: SDR33, 2038  
G:\T5NR1W\36B  
C:\SC14\SWA\TIE\T5NR1W\38

DRAWN BY: SW AUSTIN  
APPROVED: LL AUSTIN  
CREW: BS - SB - SA - TF