

U.S. PUBLIC LAND SURVEY MONUMENT RECORD - GRANT COUNTY, WI

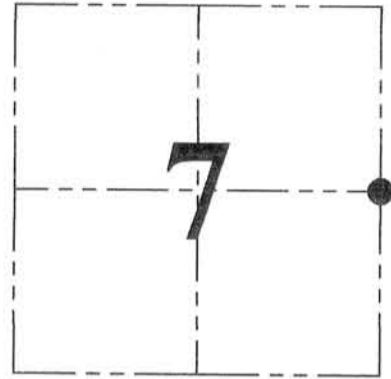
Section 7, Town 5 North Range 1 West, Town of Clifton

CERTIFICATE:

I, Aaron J. Austin, do hereby certify that the corner location on this record was determined by me and/or under my direct supervision and that this U.S. Public Land Survey Monument Record is correct and complete to the best of my knowledge and belief.

Dated this 3rd day of July, 2014.

Aaron J. Austin
 Aaron J. Austin, S-2922



● = CORNER LOCATION

HISTORY OF CORNER ESTABLISHMENT:

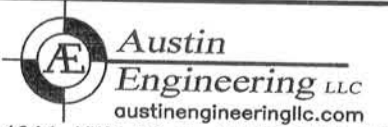
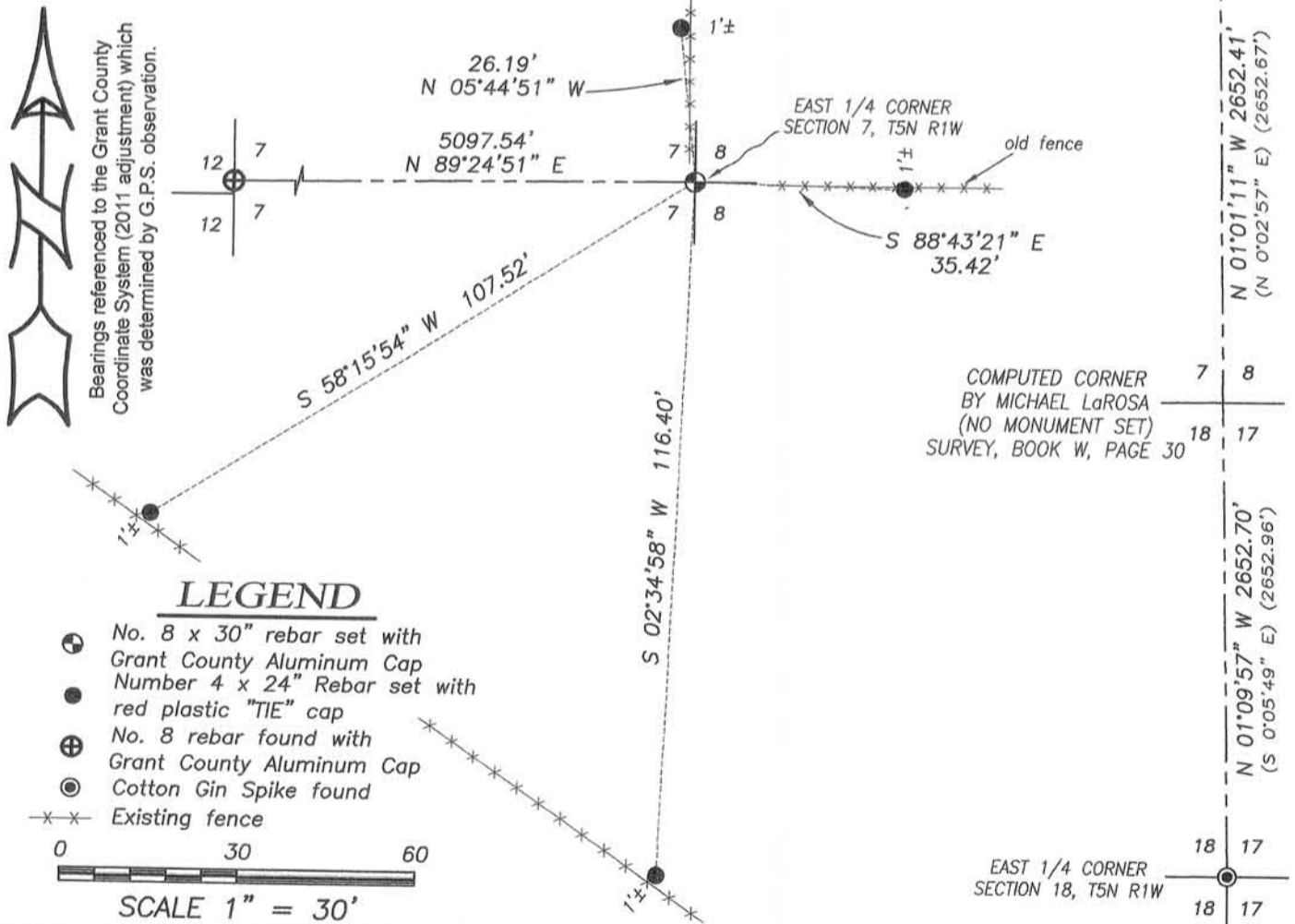
1832 Henry Park set original corner.
 1995 Michael LaRosa reset this corner and prepared a Survey Monument Record for a Survey filed in Book W, Page 30.
 No other record was found for this corner.

DESCRIPTION OF CORNER EVIDENCE FOUND:

I was unable to recover the 1 1/4" Iron pipe or any of it's ties as established by Michael LaRosa. I reset the corner based upon previous measurements taken to the iron pipe provided from Larry Austin along with measurements to the West 1/4 corner of Section 7 and the East 1/4 corner of Section 18. I set new ties as shown hereon. and verified it's location by E.D.M. and G.P.S. methods.

DESCRIPTION OF CORNER AND WITNESS MONUMENTS, references and accessories used to perpetuate the original or re-established location of this corner. Witnesses to corner location Shane Austin.

SKETCH:



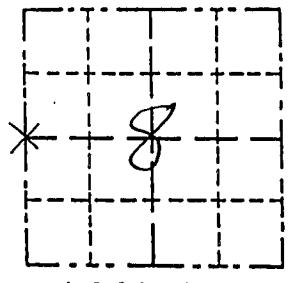
JOB NO: 14s106
 G:\14s055
 H:\TIE\T5NR1W\35

FIELDBOOK: TDSR
 DRAWN BY: AJ AUSTIN
 CREW: SW AUSTIN

Survey Monument Record

CORNER NO. _____
 SECTION 8
 TOWN SN
 RANGE 1W

TYPE OF MONUMENT 1-1/4" IRON PIPE SET
 STATE PLANE COORDINATES: N _____
 E _____
 ELEVATION — M.S.L. DATUM: _____
 THETA ANGLE: _____
 FIELD BOOK: 95-9
 PAGE 955-309, 347



LOCATION
 (Indicated by "X")

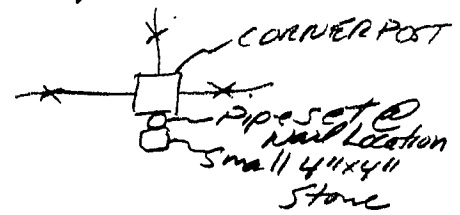
- FOUND PERPETUATED LOCATION
- OBLITERATED EVIDENCE LOCATION
- LOST CORNER (RESTORED BY PROPORTIONATE METHODS)

BASIS FOR MONUMENT LOCATION

(Use reverse side if necessary)

Show info such as: History of corner, with reference to Vol. and pg., dates, surveyor; exact description of monument replaced; if location computed, by taped or EDM traverse; landowner, remarks, etc.

There are no recent survey records of this corner. The occupied location of a 3 way fence intersection was accepted and monumented after an EDM traverse of the area and testimonial evidence given by life long residents of the area. A nail with ribbon and a small 4"x4"x8" stone were found at the corner.
 (unknown origin)



(See Pkt of Survey (THIS DATE) FOR Amire Roper, Dave Rondell & Pat Griswold for section summary.)



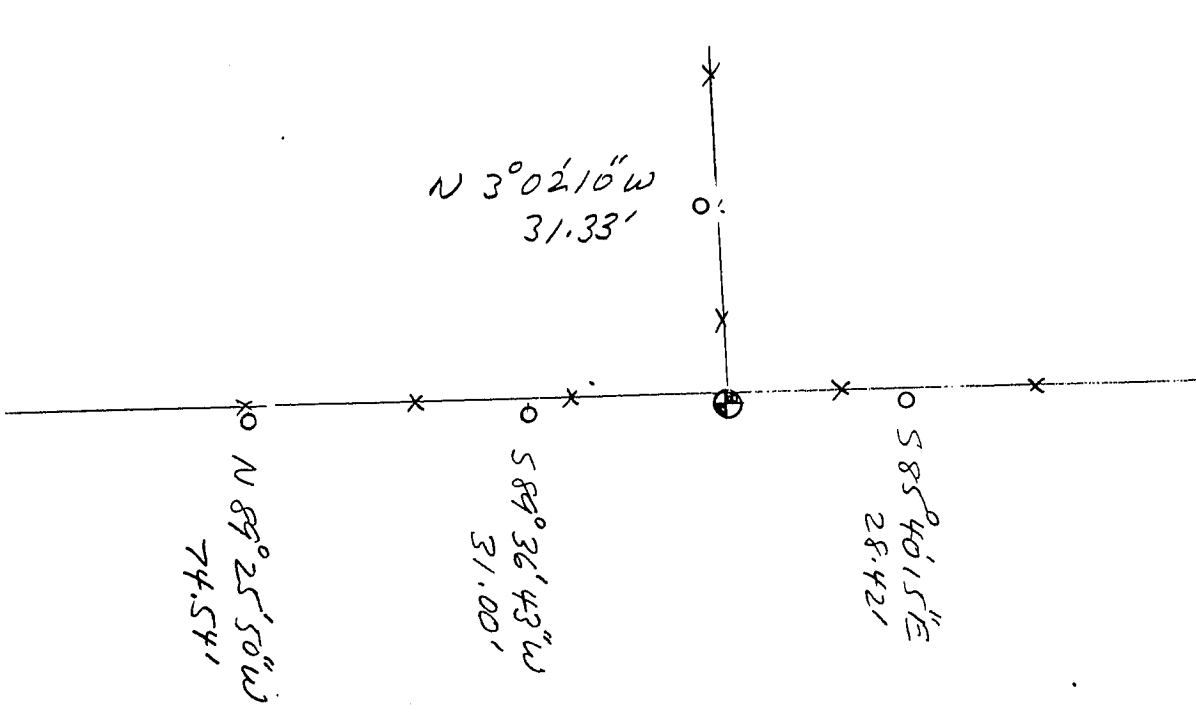
CERTIFIED CORRECT TO THE BEST OF MY KNOWLEDGE AND BELIEF

Michael R. LaRosa
 Registered Land Surveyor

DATE: 11/6/1995

TIE SKETCH

Show at least three (4) ties and monument



Legend
 ** fence
 o 1/2" Iron Pipe Set