

# GRANT COUNTY CERTIFIED LAND CORNER

CORNER NO. 52

**CERTIFICATE:**

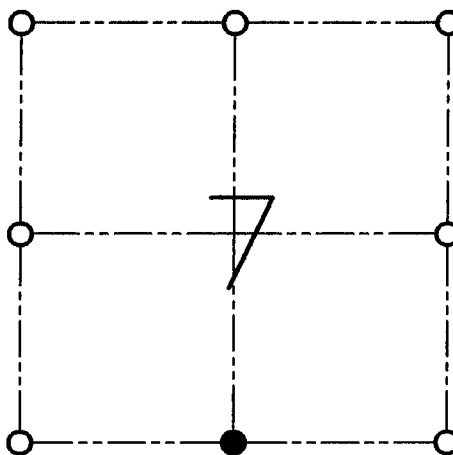
I, LARRY L. AUSTIN, DO HEREBY CERTIFY THAT ON NINTH DAY OF DECEMBER, 1998, I FOUND NO EVIDENCE OF THE SOUTH 1/4 CORNER OF SECTION 7, TOWN 5 NORTH, RANGE 1 WEST, OF THE FOURTH PRINCIPAL MERIDIAN, AND I RE-ESTABLISHED SAID CORNER ACCORDING TO THE WISCONSIN STATUTES AS SHOWN AND DESCRIBED HEREON.

DATED THIS TWENTY-FIFTH DAY OF JANUARY, 1999

*Larry L. Austin*  
LARRY L. AUSTIN S-1903



SEAL



● = CORNER LOCATION

**SOUTH 1/4 OF SECTION 7  
T 5 N R 1 W  
TOWN OF CLIFTON**

**HISTORY OF ORIGINAL CORNER ESTABLISHMENT:**

CORNER SET IN 1832 BY HARVEY PARKE.

**DESCRIPTION OF CORNER EVIDENCE FOUND:**

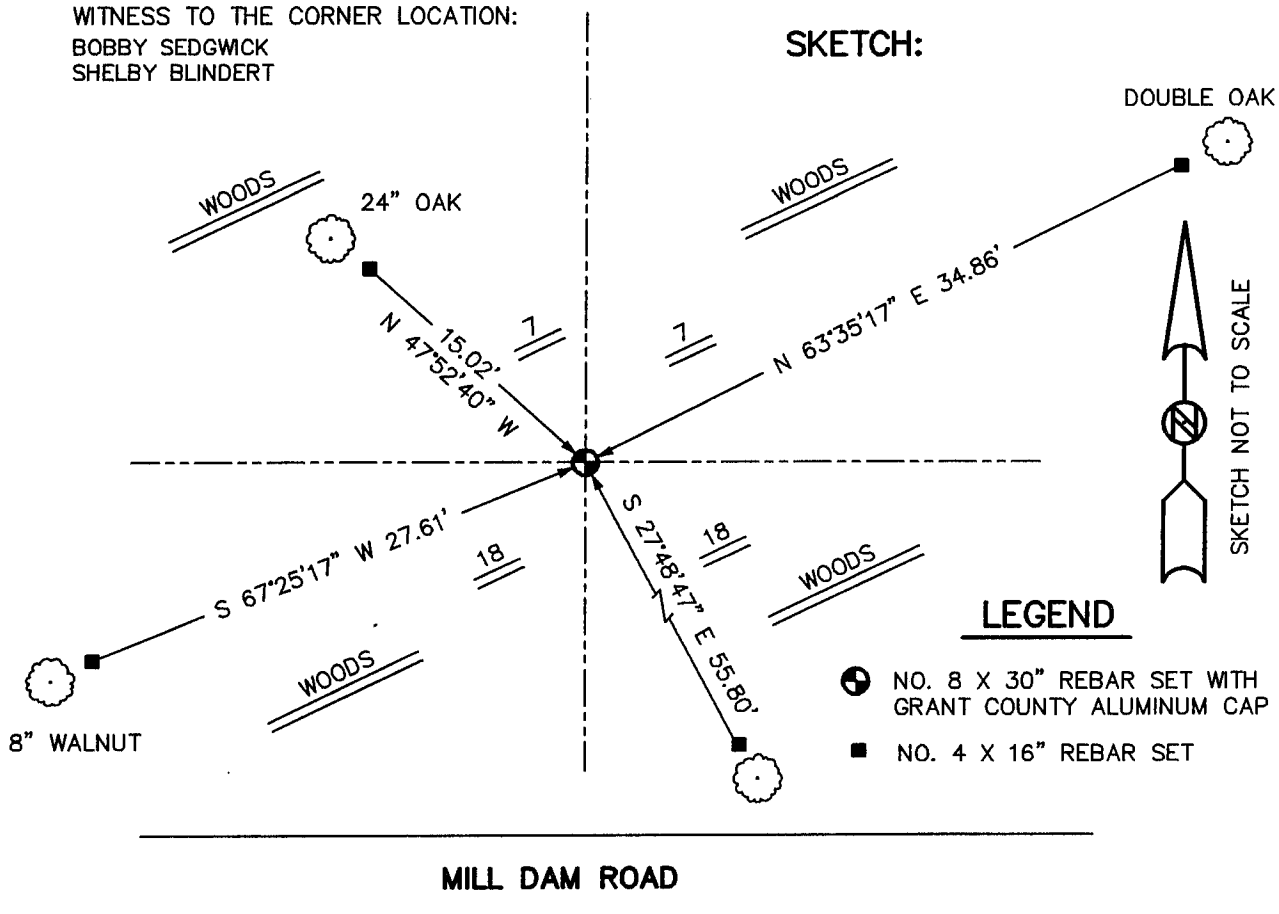
CORNER WAS SET ONLINE WITH AN OCCUPIED FENCE TO THE NORTH - ALSO ONLINE WITH OCCUPIED CORNERS TO THE EAST AND WEST OF THE CORNER ON THE SOUTH LINE OF SECTION 7. VERIFIED THIS LOCATION USING E.D.M. AND G.P.S. METHODS.

**DESCRIPTION OF CORNER AND WITNESS MONUMENTS, REFERENCES AND ACCESSORIES USED TO PERPETUATE THE ORIGINAL OR RE-ESTABLISHED LOCATION OF THIS CORNER:**

**WITNESS TO THE CORNER LOCATION:**

BOBBY SEDGWICK  
SHELBY BLINDERT

**SKETCH:**



**LEGEND**

- NO. 8 X 30" REBAR SET WITH GRANT COUNTY ALUMINUM CAP
- NO. 4 X 16" REBAR SET

MILL DAM ROAD