

GRANT COUNTY CERTIFIED LAND CORNER

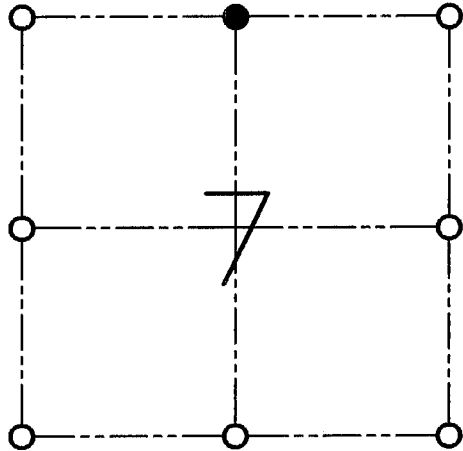
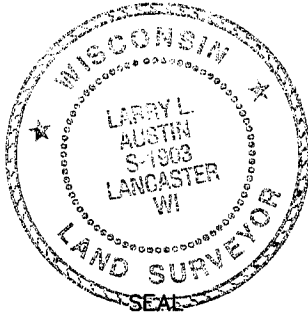
CORNER NO. 36
32

CERTIFICATE:

I, LARRY L. AUSTIN, DO HEREBY CERTIFY THAT ON NINTH DAY OF DECEMBER, 1998, I FOUND OCCUPATIONAL EVIDENCE OF THE NORTH 1/4 OF SECTION 7, TOWN 5 NORTH, RANGE 1 WEST, OF THE FOURTH PRINCIPAL MERIDIAN, AND I RE-ESTABLISHED SAID CORNER ACCORDING TO THE WISCONSIN STATUTES AS SHOWN AND DESCRIBED HEREON.

DATED THIS TWENTY-FIFTH DAY OF JANUARY, 1999

Larry L. Austin
LARRY L. AUSTIN S-1903



● = CORNER LOCATION

**NORTH 1/4 OF SECTION 7
T 5 N R 1 W
TOWN OF CLIFTON**

HISTORY OF ORIGINAL CORNER ESTABLISHMENT:

CORNER SET IN 1832 BY HARVEY PARKE.

DESCRIPTION OF CORNER EVIDENCE FOUND:

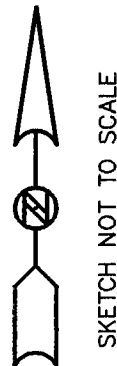
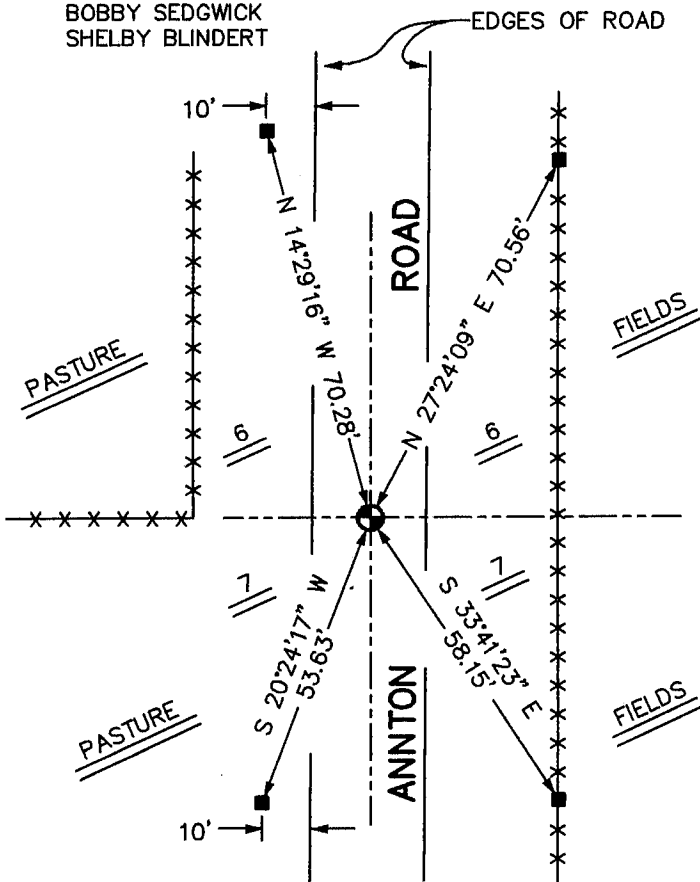
CORNER WAS SET IN THE CENTERLINE OF NORTH-SOUTH ROAD FOR EASTING. NORTHING WAS ESTABLISHED BY AN EXISTING FENCE TO THE WEST. VERIFIED THIS LOCATION USING E.D.M. AND G.P.S. METHODS.

DESCRIPTION OF CORNER AND WITNESS MONUMENTS, REFERENCES AND ACCESSORIES USED TO PERPETUATE THE ORIGINAL OR RE-ESTABLISHED LOCATION OF THIS CORNER:

WITNESS TO THE CORNER LOCATION:

BOBBY SEDGWICK
SHELBY BLINDERT

SKETCH:



LEGEND

- NO. 8 X 30" REBAR SET WITH GRANT COUNTY ALUMINUM CAP
- NO. 4 X 16" REBAR SET
- *** EXISTING FENCE