

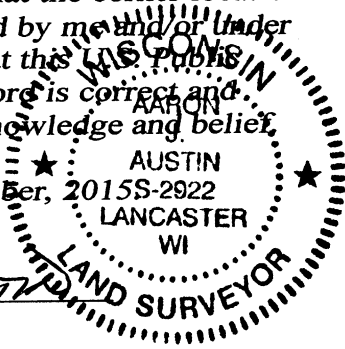
U.S. PUBLIC LAND SURVEY MONUMENT RECORD - GRANT COUNTY, WI

Section 5, Town 5 North Range 1 West, Town of Clifton

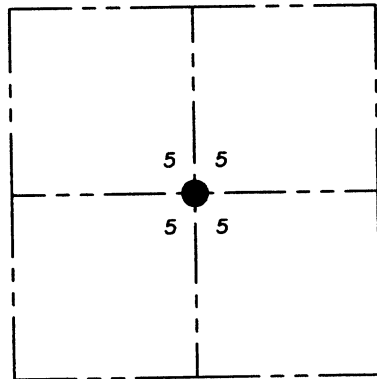
CERTIFICATE:

I, Aaron J. Austin, Wisconsin Professional Land Surveyor, do hereby certify that the corner location on this record was determined by me and/or under my direct supervision and that this Wisconsin Public Land Survey Monument Record is correct and complete to the best of my knowledge and belief.

Dated this 2nd day of November, 2015



Aaron J. Austin
Aaron J. Austin, S-2922



● = CORNER LOCATION

HISTORY OF CORNER ESTABLISHMENT:

Corner was not set with original survey.
1848-Stuntz established the corner on a Survey filed in Book B, Page 107.
1889-Goold set a Stone for the corner on a Survey filed in Book D, Page 181.

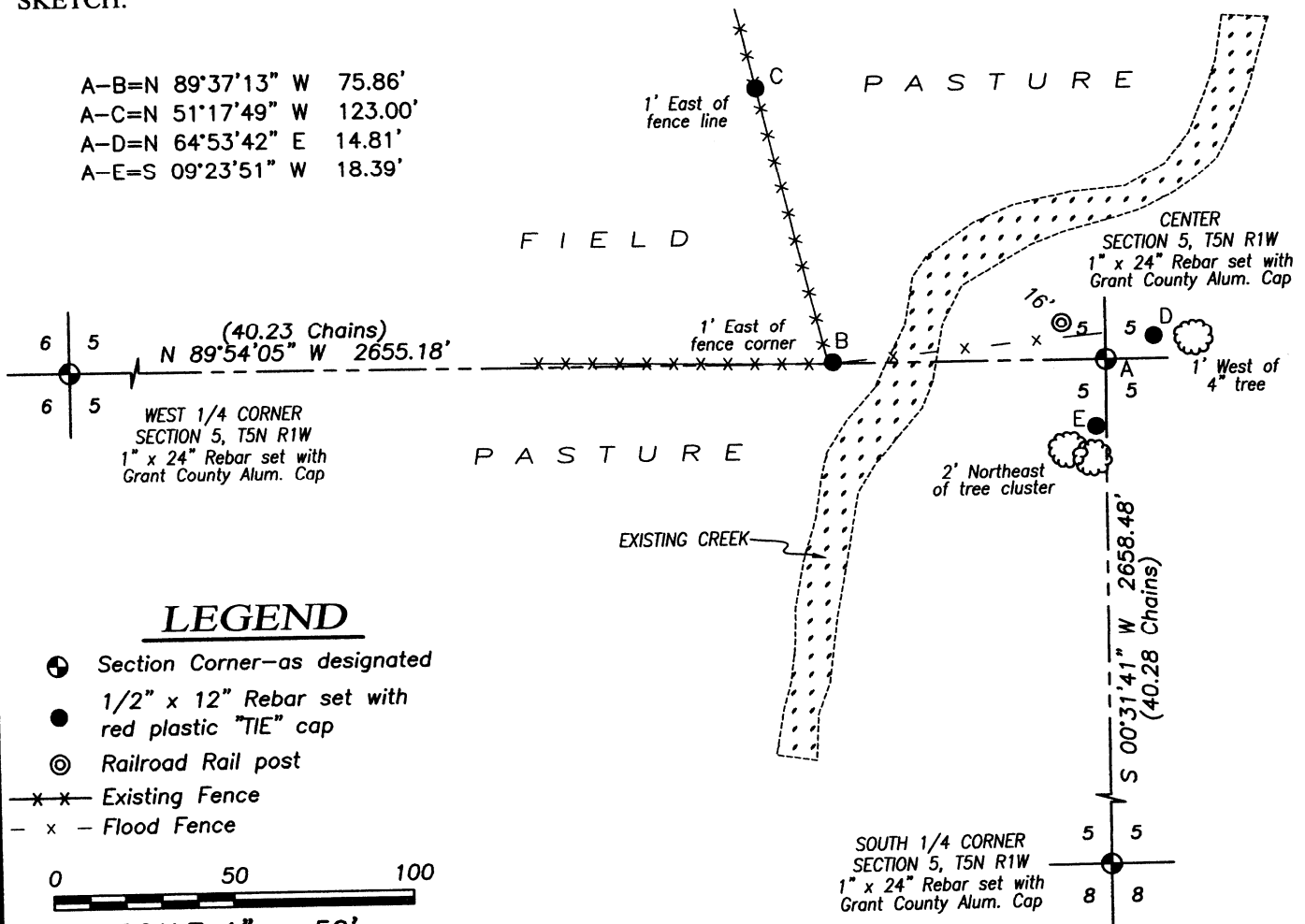
DESCRIPTION OF CORNER EVIDENCE FOUND:

I retraced this location based upon dimensions to the West 1/4 corner and the South 1/4 corner. I held these particular dimensions due to the terrain and felt it would have been more accurate chaining these two directions versus to the North 1/4 corner and the East 1/4 corner. After establishing this location, I searched the immediate area for the Stone of record and could not recover it. This corner does fall in a creek bottom. I then searched for a Stone located 10.07 1/2 chains South of this corner and 10.00 chains North of this corner. I did recover a stone to the North which matched the dimensions of record as noted on the Survey filed in Book D, Page 181, although it was laying flat several feet downhill from the computed location. This location also fit the Northing of a nearby fence corner to the West. I set 4 witness corners and verified this location with E.D.M. and G.P.S. methods.

DESCRIPTION OF CORNER AND WITNESS MONUMENTS, references and accessories used to perpetuate the original or re-established location of this corner. Witnesses to corner location Shane Austin.

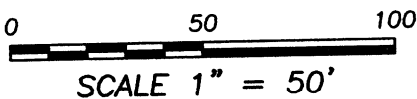
SKETCH:

- A-B=N 89°37'13" W 75.86'
- A-C=N 51°17'49" W 123.00'
- A-D=N 64°53'42" E 14.81'
- A-E=S 09°23'51" W 18.39'



LEGEND

- Section Corner—as designated
- 1/2" x 12" Rebar set with red plastic "TIE" cap
- ⊙ Railroad Rail post
- x - Existing Fence
- x - Flood Fence



Austin Engineering LLC
austinengineeringllc.com

4211 HWY 81 E, LANCASTER, WI 53813
PHONE: 608-723-6363 FAX: 608-723-6702

JOB NO: 15s155
H:\CRD\15s155
H:\TIE\T5NR1W\15.5

FIELDBOOK: TDSR
DRAWN BY: AJ AUSTIN
CREW: SW AUSTIN