

U.S. PUBLIC LAND SURVEY MONUMENT RECORD - GRANT COUNTY, WI

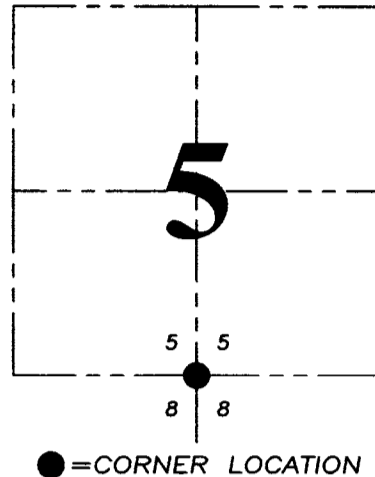
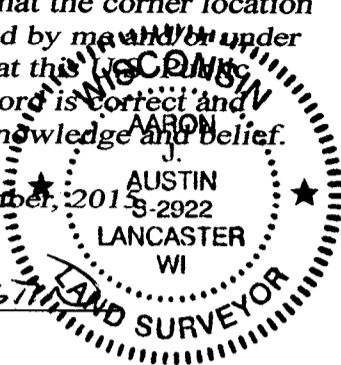
Section 5, Town 5 North Range 1 West, Town of Clifton

CERTIFICATE:

I, Aaron J. Austin, Wisconsin Professional Land Surveyor, do hereby certify that the corner location on this record was determined by me and/or under my direct supervision and that this Wisconsin Land Survey Monument Record is correct and complete to the best of my knowledge and belief.

Dated this 2nd day of November, 2015

Aaron J. Austin
 Aaron J. Austin, S-2922



HISTORY OF CORNER ESTABLISHMENT:

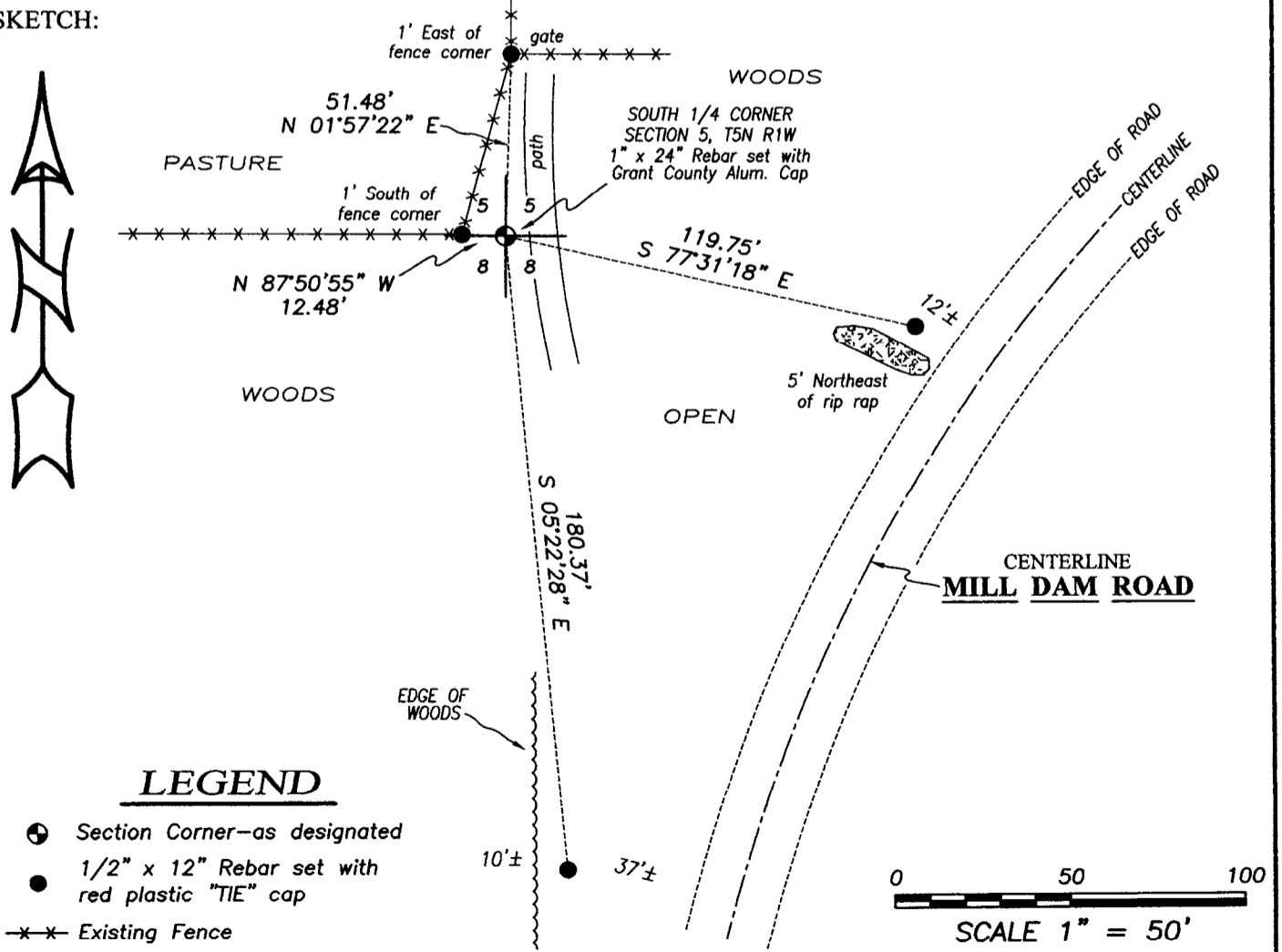
1832-Harvey Parke set original corner.
 1889-Herbert Goold set a Stone on a Survey filed in Book D, Page 181.
 1990-Bruce Bowden reset the corner and prepared a U.S. Public Land Survey Monument Record.
 1990-Bruce Bowden tied to the corner on a Survey filed in Book N, Page 34.
 1995-Michael LaRosa tied to the corner on a Survey filed in Book W, Page 30.

DESCRIPTION OF CORNER EVIDENCE FOUND:

Bruce Bowden set a 1 1/2" Iron pipe in place of a found stone set by Herbert Goold. I found a bent 1 1/2" Iron pipe and replaced it with a 1" x 24" Rebar with a Grant County Aluminum Cap. No witness corners were recovered from Bruce Bowden's tie sheet. I set 4 new witness monuments as shown hereon and verified this location with E.D.M. and G.P.S. methods.

DESCRIPTION OF CORNER AND WITNESS MONUMENTS, references and accessories used to perpetuate the original or re-established location of this corner. Witnesses to corner location Shane Austin.

SKETCH:



Austin Engineering LLC
 austinengineeringllc.com
 4211 HWY 81 E, LANCASTER, WI 53813
 PHONE: 608-723-6363 FAX: 608-723-6702

JOB NO: 15s155
 H:CRD\15s155
 H:TIE\T5NR1W\30

FIELDBOOK: TDSR
 DRAWN BY: AJ AUSTIN
 CREW: SW AUSTIN

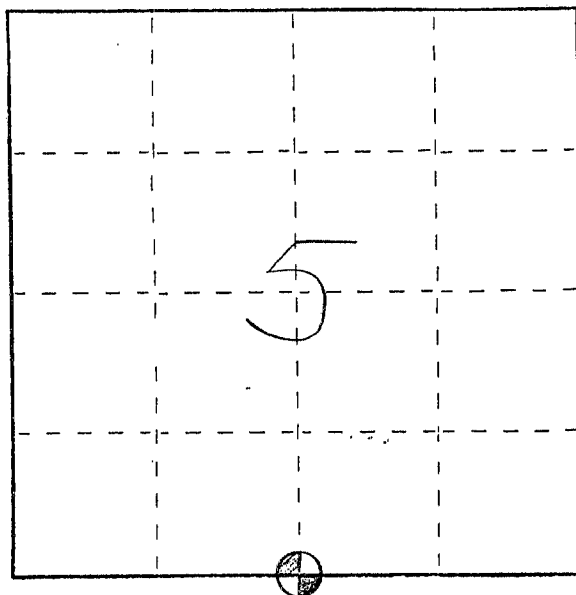
U: S. PUBLIC LAND SURVEY MONUMENT RECORD

INSTRUCTIONS: This record shall show the location of the corner and shall include all of the following nine elements (a through i).

(a) Identify the corner by reference to the U.S. public land survey system.

○ = Corner monument restored.

SOUTH 1/4 CORNER
SECTION 5
TOWN 5 NORTH
RANGE 1 WEST
CLIFTON TOWNSHIP
GRANT CO., WIS



(b) Describe any record evidence, monument evidence, occupational evidence, testimonial evidence or any other material evidence you considered, and whether the monument was found or placed.

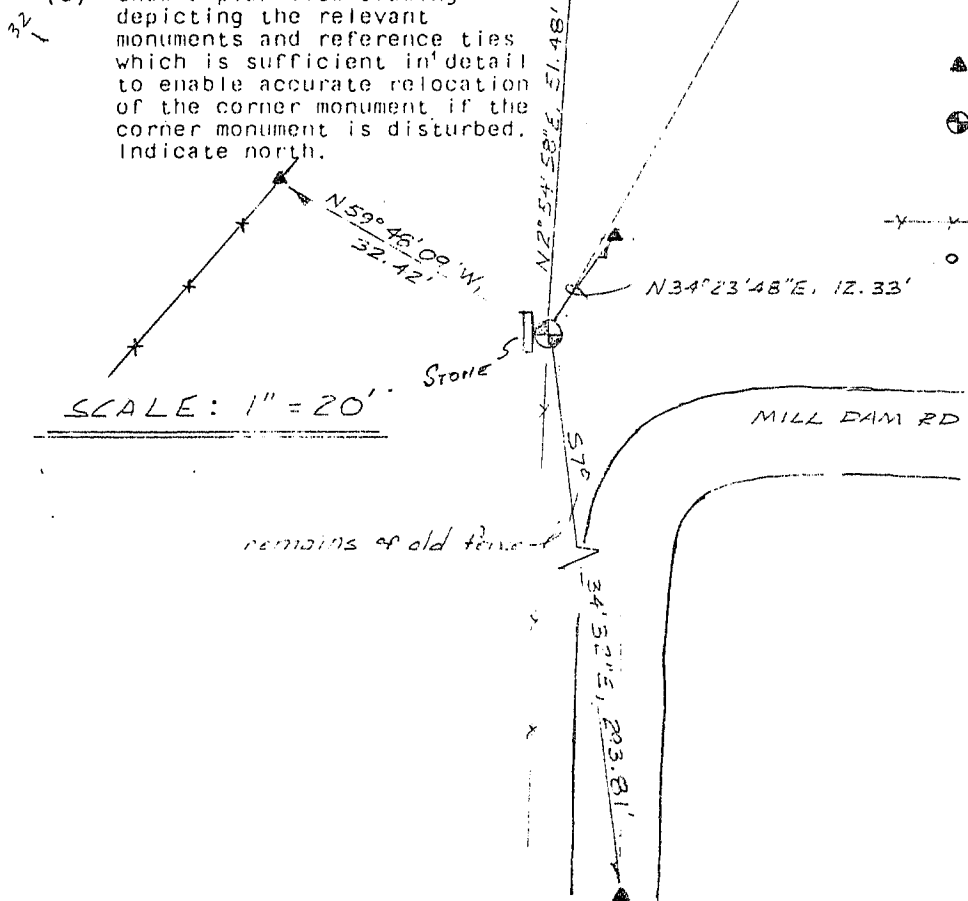
MONUMENT SET IN PLACE OF 2" x 11" x 12" STONE THAT WAS SET BY HERBERT GOULD FOR A SURVEY DATED OCT. 27, 1889. THE STONE WAS FOUND TIPPED TO THE WEST. THIS LOCATION WAS VERIFIED BY PROPORTIONATE MEASUREMENTS TO FENCES FROM AN EDM TRAVERSE OF THE AREA.

(c) In the plan view drawing below provide reference ties to at least 4 witness monuments, or, if the location is within a municipality, to at least 2 witness monuments. (Witness monuments shall be made of concrete, natural stone, iron or other equally durable material, ~~except wood.~~) Describe witness monuments.

(d) Show a plan view drawing depicting the relevant monuments and reference ties which is sufficient in detail to enable accurate relocation of the corner monument if the corner monument is disturbed. Indicate north.

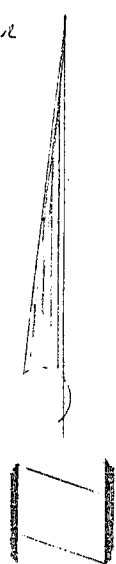
LEGEND

- ▲ 1" x 24" IRON PIPE SET
- ⊕ 1 1/2" x 24" GALVANIZED IRON PIPE SET NEXT TO 2" x 11" x 12" STONE
- x-x- FENCE LINE
- SPIKE AT FENCE CORNER



SCALE: 1" = 20'

remains of old fence



(e) Describe any material discrepancy between the location of the corner as restored or reestablished and the location of that corner as previously restored or reestablished by distance and direction. Show the discrepancy on the plan view drawing under (d), above. Show the distance between the corner as previously restored or reestablished and (1) the corner as restored or reestablished, and (2) to at least 2 of the witness monuments shown on the drawing in (d), above.

NONE

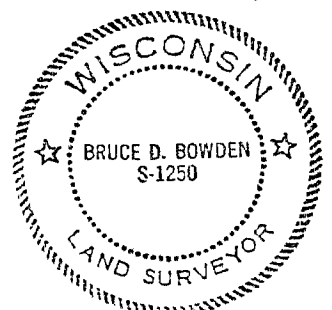
(f) Was the corner restored through acceptance of (1) an obliterated evidence location, or, (2) a found perpetuated location?

(2) A FOUND PERPETUATED LOCATION

(g&h) Was the corner reestablished through lost corner proportionate methods? If so, show the method, including the directions and distances to other public land survey corners used as evidence or used for proportioning in determining the corner location?

No.

Affix Land Surveyor Seal



(i) I, Bruce D. Bowden
(type or print name) certify that the corner location shown on this record was determined by me or under my direction and control and that this U.S. Public Land Survey Monument Record is correct and complete to the best of my knowledge and belief.

Signature

Date

Bruce D. Bowden

March 22, 1990