

U. S. PUBLIC LAND SURVEY MONUMENT RECORD

INSTRUCTIONS: This record shall show the location of the corner and shall include all of the following nine elements (a through i).

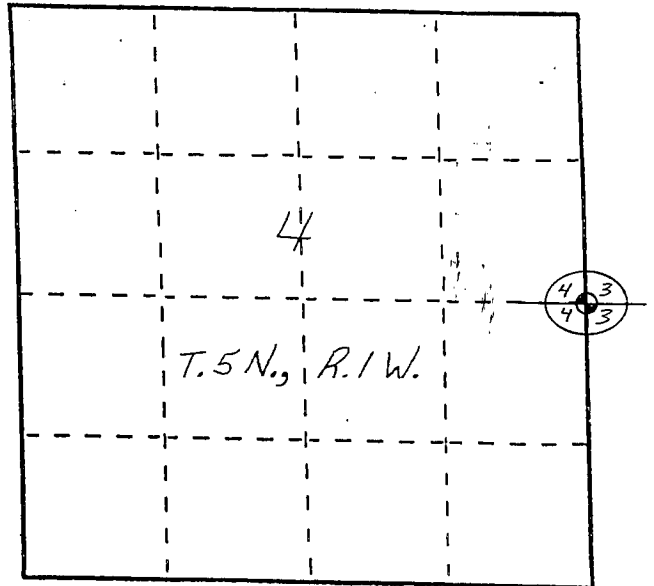
(a) Identify the corner by reference to the U.S. public land survey system.

○ = Corner monument restored.

The East Quarter Corner
of Section 4, Town 5 North,
Range 1 West, Clifton Township,
Grant County, Wisconsin.

NORTH 556,165.13'
EAST 878,617.82'

GRANT COUNTY COORDINATES
WBS 1984 (91)

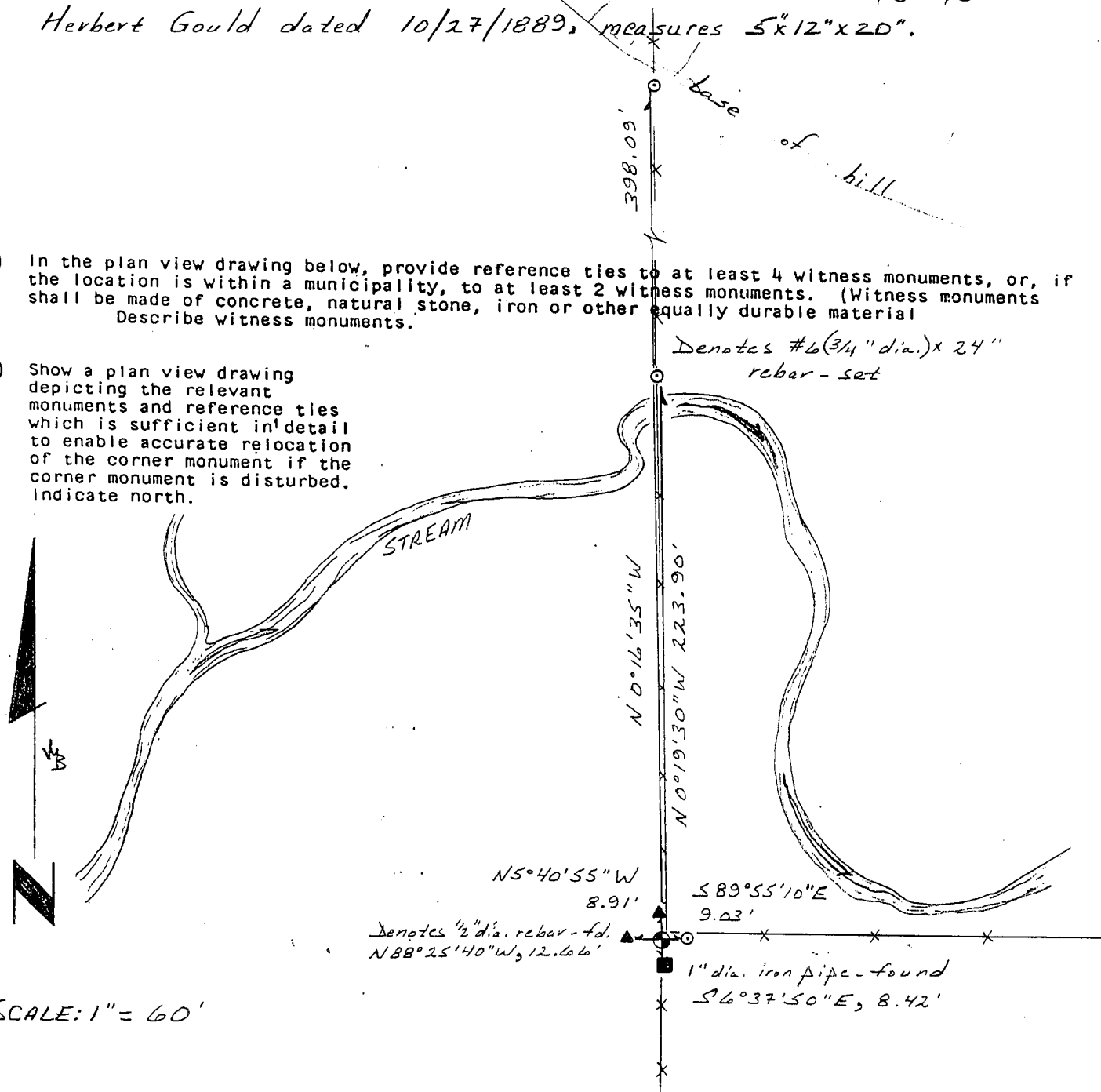


(b) Describe any record evidence, monument evidence, occupational evidence, testimonial evidence or any other material evidence you considered, and whether the monument was found or placed.

I found and accepted a stone recorded in a survey by
Herbert Gould dated 10/27/1889, measures 5"x12"x20".

(c) In the plan view drawing below, provide reference ties to at least 4 witness monuments, or, if the location is within a municipality, to at least 2 witness monuments. (Witness monuments shall be made of concrete, natural stone, iron or other equally durable material. Describe witness monuments.)

(d) Show a plan view drawing depicting the relevant monuments and reference ties which is sufficient in detail to enable accurate relocation of the corner monument if the corner monument is disturbed. Indicate north.



SCALE: 1" = 60'

- (e) Describe any material discrepancy between the location of the corner as restored or reestablished and the location of that corner as previously restored or reestablished by distance and direction. Show the discrepancy on the plan view drawing under (d), above. Show the distances between the corner as previously restored or reestablished and (1) the corner as restored or reestablished, and (2) to at least 2 of the witness monuments shown on the drawing in (d), above.

Thomas L. Buck found a 3/4" dia. rebar
(tie sheet dated 8/24/1998).

That monument was N13°W, 0.4't
from a stone noted in a survey
by Herbert Gould 10/27/1889.

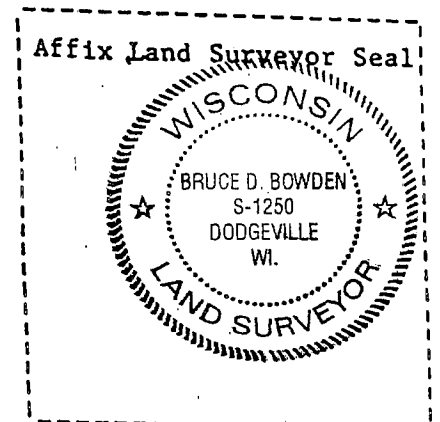
I removed the rebar and used it for a tie.

- (f) Was the corner restored through acceptance of (1) an obliterated evidence location, or, (2) a found perpetuated location?

A found perpetuated location.

- (g&h) Was the corner reestablished through lost corner proportionate methods? If so, show the method, including the directions and distances to other public land survey corners used as evidence or used for proportioning in determining the corner location?

No.



- (1) I, Bruce D. Bowden
(type or print name) certify that the corner location shown
on this record was determined by me or under my direction and
control and that this U.S. Public Land Survey Monument Record is
correct and complete to the best of my knowledge and belief.

Bruce D. Bowden
Signature

Oct 7, 2004
Date

RECD AUG 26 1998

Survey Monument Record

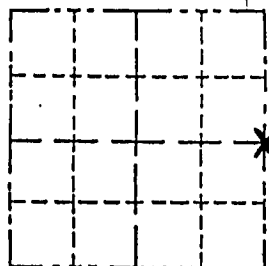
TYPE OF MONUMENT 3/4" Iron Rod
 STATE PLANE COORDINATES: N _____
 E _____
 ELEVATION — M.S.L. DATUM: _____
 THETA ANGLE: _____
 FIELD BOOK: _____
 PAGE _____

CORNER NO. _____
 SECTION 4
 TOWN 5 NORTH
 RANGE 1 WEST

BASIS FOR MONUMENT LOCATION

(Use reverse side if necessary)

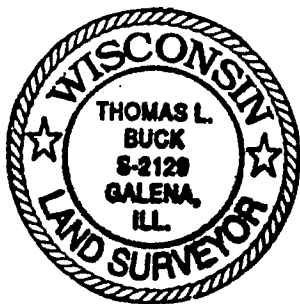
Show info such as: History of corner, with reference to Vol. and pg., dates, surveyor; exact description of monument replaced; if location computed, by taped or EDM traverse; landowner, remarks, etc.



LOCATION
 (Indicated by "X")

- FOUND PERPETUATED LOCATION
- OBLITERATED EVIDENCE LOCATION
- LOST CORNER (RESTORED BY PROPORTIONATE METHODS)

FOUND AND ACCEPTED A 3/4" IRON ROD AFTER VERIFICATION BY PROPORTIONATE MEASUREMENTS FROM AN E.D.M. TRAVERSE OF SECTIONS 4 & 9 AND G.P.S OBSERVATIONS.



CERTIFIED CORRECT TO THE BEST OF MY KNOWLEDGE AND BELIEF

Thomas L. Buck
 Registered Land Surveyor

DATE: 8/24/98

TIE SKETCH

Show at least three (3) ties and monument

LEGEND

- ⊕ = 3/4" IRON ROD
- ⊙ = P.K. + SHWER
- = 1/2" IRON ROD
- *—*— = EXISTING FENCE

