

U.S. PUBLIC LAND SURVEY MONUMENT RECORD

(As Required By s. A-E 7.08, WI Adm. Code)

History of original corner establishment and subsequent restorations and description of any record, monument, occupational, testimonial or other evidence considered: *The last record I found of ownership changing at this corner was from the late 1800's when a road passed through East-west and there was change of ownership at the section line. Currently there is an east-west fence the northings of which is balanced with other measurements in the section. I measured to a 2" pipe set in 1988 by Mallett but did not except it as it was too far west near the northeast corner. I found an Aluminum capped Iron Rod 42.85' easterly of this pipe at the southeast corner of 34. I projected a line*

Corner was: (Check All That Apply) *From an Iron rod at the southeast corner through the fence to a point 23 links west of this and set the corner at the intersection with the fence.*

- Restored through acceptance of an obliterated evidence location
- Restored through acceptance of a found perpetuated location
- Considered a lost corner and reestablished through lost corner proportionate methods (include a plan view drawing showing distances and directions to other Public Land Survey Corners used for proportioning and determining the corner location)
- Restored or reestablished in a location that differs from a previous restoration or reestablishment (include a plan view drawing and indicate what was set and /or found)

Describe the monument and accessories used to perpetuate the location of this corner. (Include a plan view drawing and indicate what was set and/or found)

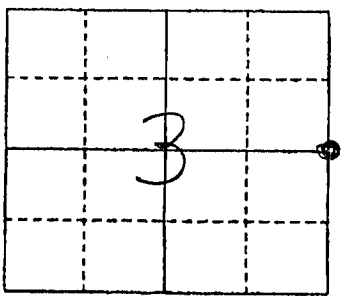
NOTE: SEE SECTION SUMMARY SHEET FOR MORE INFORMATION

Legend
 • 12" Landscape Spike Set
 □ Wood Post
 * * *

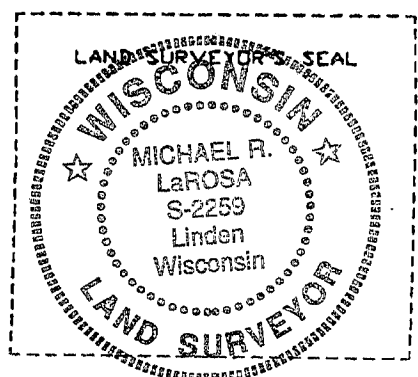
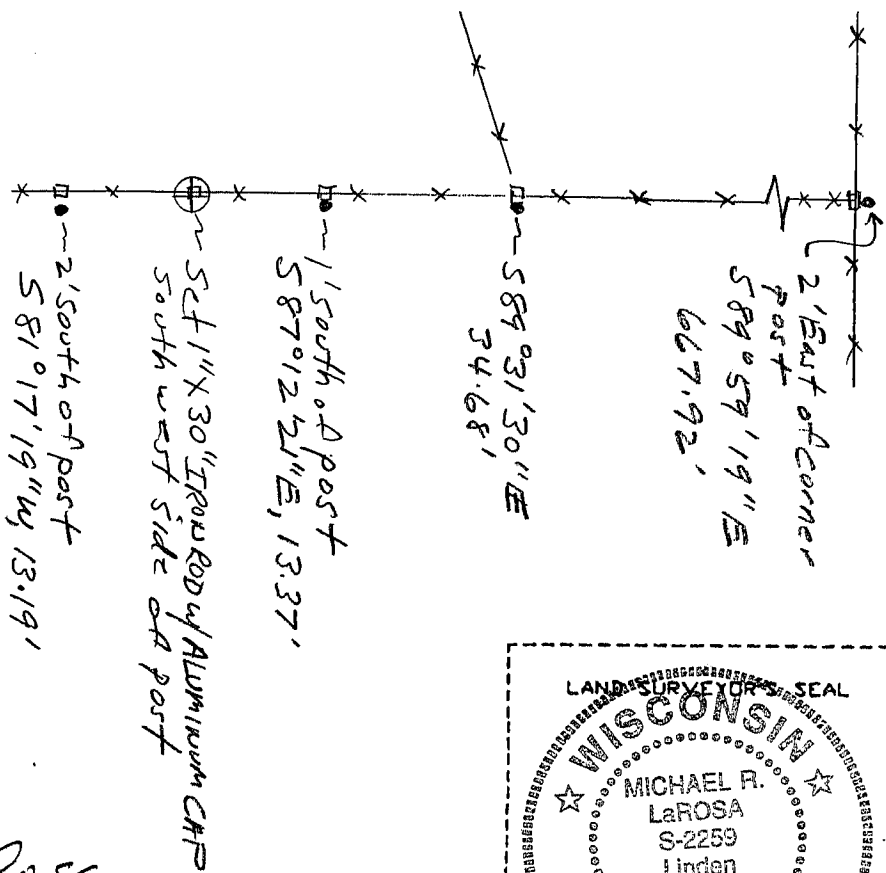
1" = 20' +/-

Br. Ref. Grant Co. Coord. System

The E 1/4
 corner of Section 3
 T. 5 N., R. 1 W,
Grant County, Wisconsin
 Job ID: 200413
 Book # 7



● = Location of Corner



Michael R LaRosa
 I, (Type or print name) certify that the corner location shown on this record was determined by me or under my direction and control and that this U.S. Public Land Survey Monument Record is correct and complete to the best of my knowledge and belief.

Michael R. LaRosa 4/10/04
 Signature Date

Index No. 18

*556212.66
 883947.69 emailed*