

GRANT COUNTY CERTIFIED LAND CORNER

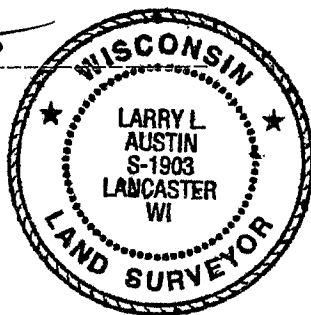
CORNER NUMBER 25

CERTIFICATE:

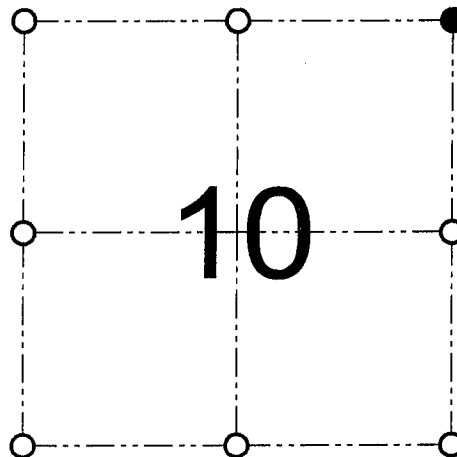
I, Larry L. Austin, do hereby certify that on the 14th day of December, 2000, I found evidence of the Northeast corner of Section 10, Town 5 North, Range 1 West, of the 4th Principal Meridian, and I re-established said corner according to the Wisconsin statutes as shown and described hereon.

Dated this 29th day of January, 2001

Larry L. Austin
Larry L. Austin S-1903



SEAL



● = CORNER LOCATION

NORTHEAST CORNER OF
SECTION 10, T 5 N R 1 W
TOWN OF CLIFTON

HISTORY OF ORIGINAL CORNER ESTABLISHMENT:

Corner was originally set in 1832 by Harvey Parke. In 1840 Geo Stuntz found the original corner. In 1988 Douglas Malliet found a railroad spike. In 1995 Jewell tied to the corner.

DESCRIPTION OF CORNER EVIDENCE FOUND:

I found an existing nail at this location.
I accepted it's location after an EDM & GPS traverse of the area.



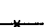
DESCRIPTION OF CORNER AND WITNESS MONUMENTS, references and accessories used to perpetuate the original or re-established location of this corner

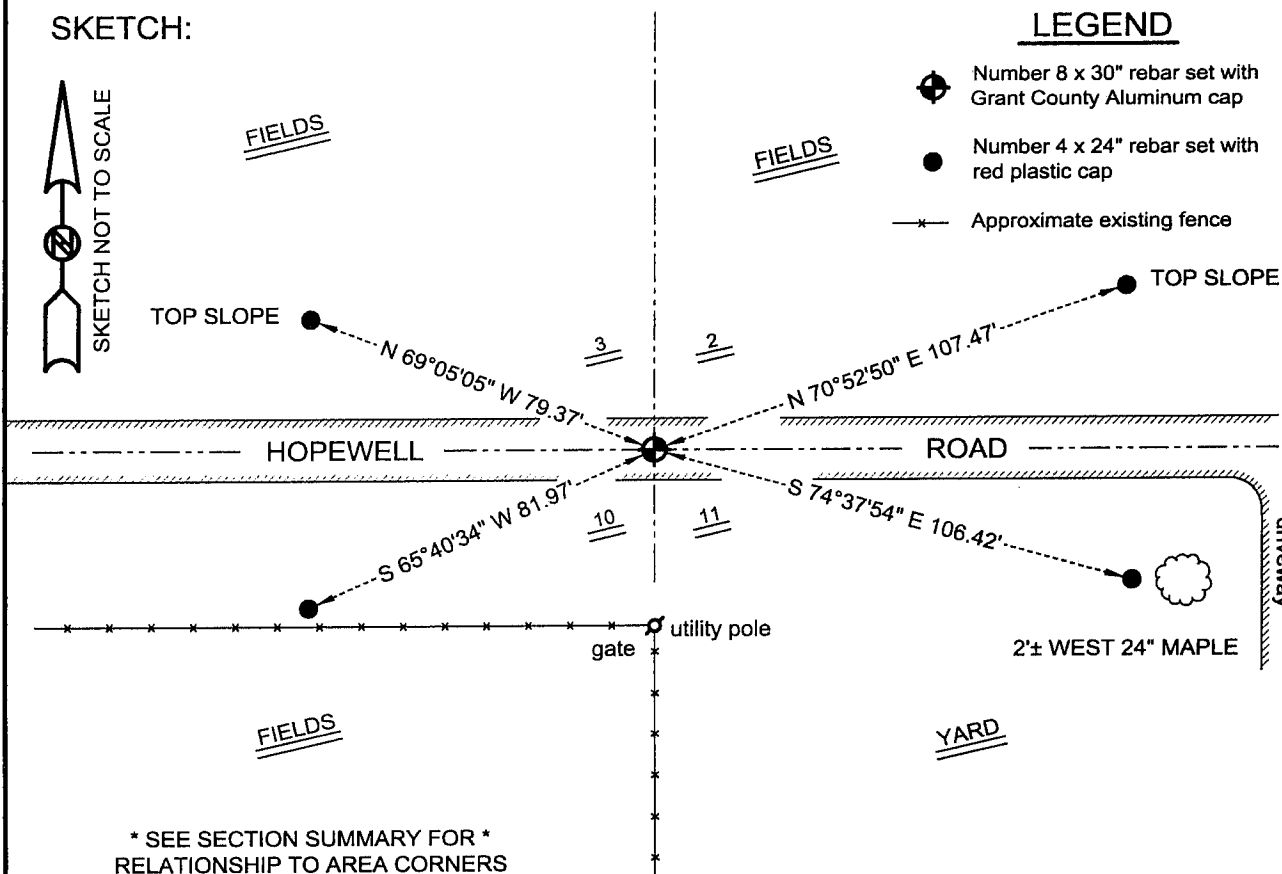
WITNESS TO THE CORNER LOCATION: TIM FAUVER & SHELBY BLINDERT & BOBBY SEDGWICK

SKETCH:



LEGEND

-  Number 8 x 30" rebar set with Grant County Aluminum cap
-  Number 4 x 24" rebar set with red plastic cap
-  Approximate existing fence



AUSTIN ENGINEERING, LLC
4211 HWY 81 E, LANCASTER, WI 53813
PHONE 608-723-6363 FAX 608-723-6702

FIELDBOOK: SDR33, 2038
G:\T5NR1W\36B
C:\SC14\SWA\TIE\T5NR1W\25

DRAWN BY: SW AUSTIN
APPROVED: LL AUSTIN
CREW: BS - SB - SA - TF