

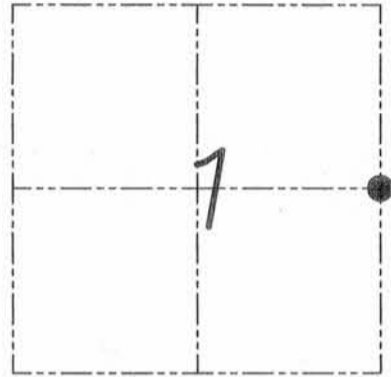
U.S. PUBLIC LAND SURVEY MONUMENT RECORD

Section 1, Town 5 North Range 1 West, Town of Clifton, Grant County, Wisconsin

CERTIFICATE

I, Larry L. Austin, do hereby certify that the corner location on this record was determined by me and/or under my direct supervision and that this U.S. public land survey monument record is correct and complete to the best of my knowledge and belief.

Larry L. Austin
 Larry L. Austin, S-1903



● = CORNER LOCATION

HISTORY OF CORNER

Corner was originally set in 1832 by Lyon. In 1991 I set and tied the corner. No other record of the corner was found.

CORNER EVIDENCE FOUND

I measured to the existing P.K. nail prior to road construction. I set new ties and corner after road construction as shown below. Verified this location using EDM & GPS methods.

DESCRIPTION OF CORNER AND WITNESS MONUMENTS, references and accessories used to perpetuate the original or re-established location of this corner. Witnesses to monument location Bobby Sedgwick & Brad Digman & Shane Austin

SKETCH:

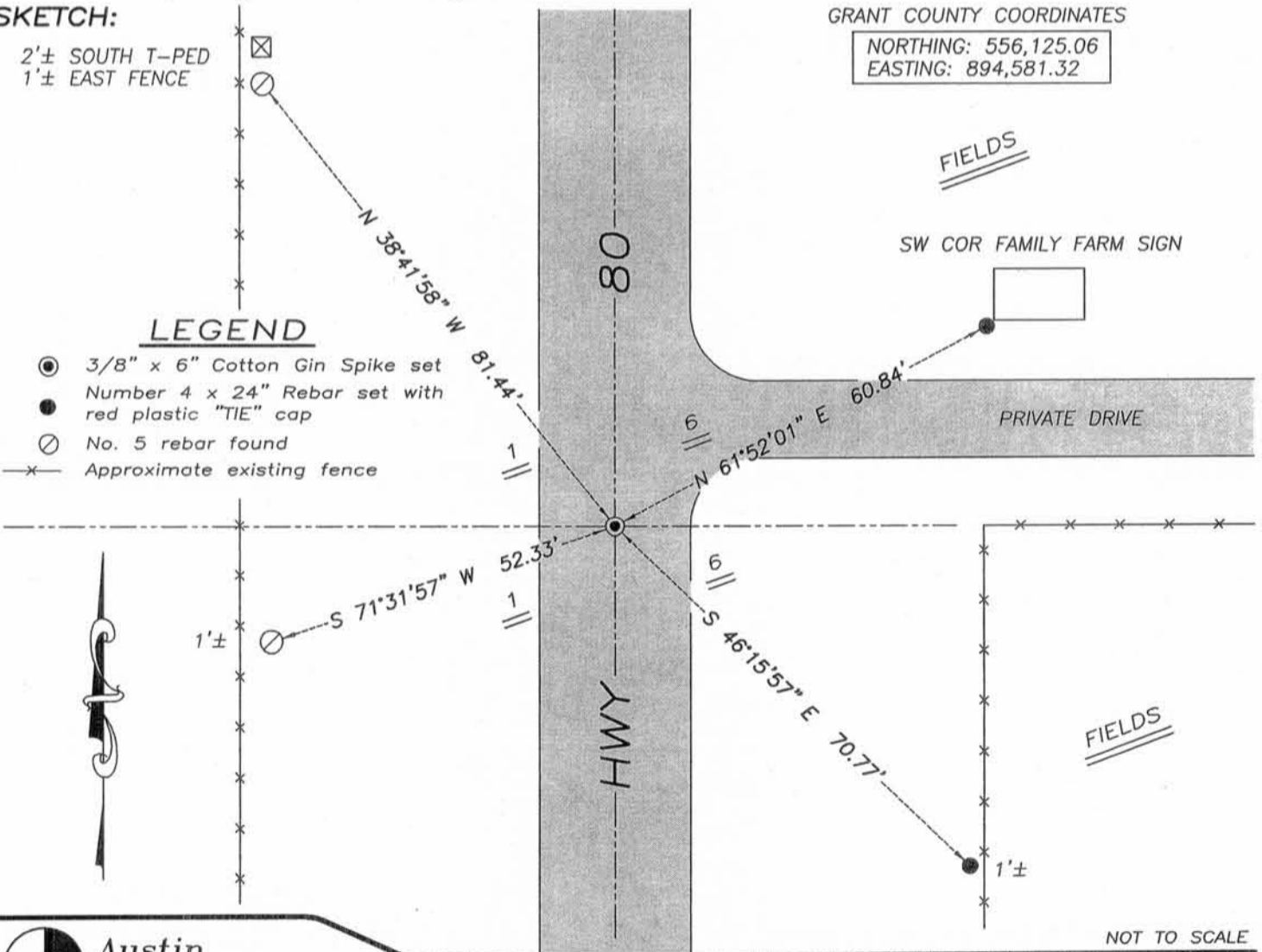
2'± SOUTH T-PED
 1'± EAST FENCE

GRANT COUNTY COORDINATES

NORTHING: 556,125.06
 EASTING: 894,581.32

LEGEND

- 3/8" x 6" Cotton Gin Spike set
- Number 4 x 24" Rebar set with red plastic "TIE" cap
- No. 5 rebar found
- x- Approximate existing fence



NOT TO SCALE

Austin Engineering LLC

4211 HWY 81 E, LANCASTER, WI 53813
 PHONE 608-723-6363 FAX 608-723-6702

JOB NUMBER 08S249-WIDOT
 FIELDBOOK: TDSR, 2810-B
 G:\GRANTDOT\T5NR1W
 H:\TIE\T5NR1W\20

DRAWN BY: SW AUSTIN
 APPROVED: LL AUSTIN

20

JUN 28 2010

U. S. PUBLIC LAND SURVEY MONUMENT RECORD

INSTRUCTIONS: This record shall show the location of the corner and shall include all of the following nine elements (a through i).

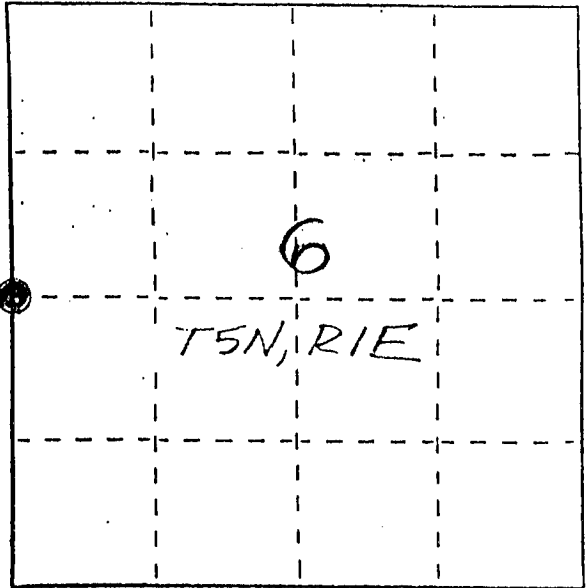
(a) Identify the corner by reference to the U.S. public land survey system.

● Corner monument restored.

W¹/₄ CORNER
 SEC 6, T5N, R1E
 IOWA CO.



JUN 10 1991



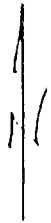
(b) Describe any record evidence, monument evidence, occupational evidence, testimonial evidence or any other material evidence you considered, and whether the monument was found or placed.

MONUMENT WAS PLACED BASED ON OCCUPATIONAL EVIDENCE, ORAL TESTIMONY & LOCATION AS SHOWN ON D.O.T. PLANS - PROJ. TOSIO (2) & VERIFIED BY EDM TRAVERSE.

(c) In the plan view drawing below, provide reference ties to at least 4 witness monuments. or, if the location is within a municipality, to at least 2 witness monuments. (Witness monuments shall be made of concrete, natural stone, iron or other equally durable material.) Describe witness monuments.

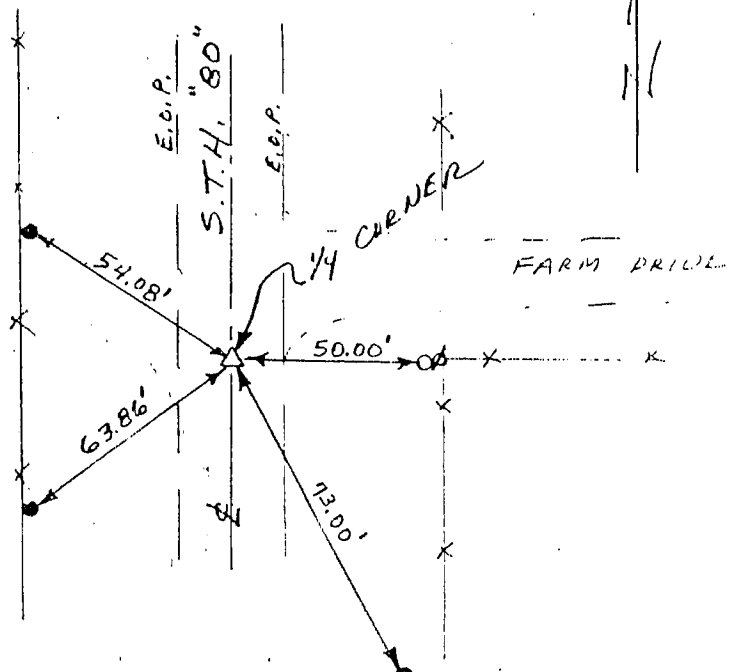
(d) Show a plan view drawing depicting the relevant monuments and reference ties which is sufficient in detail to enable accurate relocation of the corner monument if the corner monument is disturbed. Indicate north.

No SCALE



LEGEND

- X X EXIST. FENCE
- △ PK NAIL SET =
1/4 CORNER
- 1" x 24" IRON PIPE = TIE
- 3/8" x 10" STEEL PEG = TIE
- ⊕ POWER POLE



p. 20

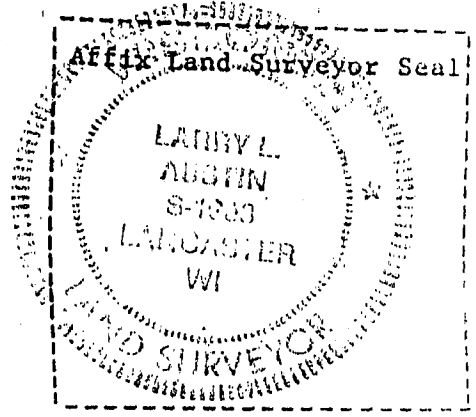
(e) Describe any material discrepancy between the location of the corner as restored or reestablished and the location of that corner as previously restored or reestablished by distance and direction. Show the discrepancy on the plan view drawing under (d) above. Show the distances between the corner as previously restored or reestablished and (1) the corner as restored or reestablished, and (2) to at least 2 of the witness monuments shown on the drawing in (d), above.

NONE

(f) Was the corner restored through acceptance of (1) an obliterated evidence location, or, (2) a found perpetuated location? (2) FOUND PERPETUATED LOCATION

(g&h) Was the corner reestablished through lost corner proportionate methods? If so, show the method, including the directions and distances to other public land survey corners used as evidence or used for proportioning in determining the corner location?

No.



(i) I, LARRY L. AUSTIN (type or print name) certify that the corner location shown on this record was determined by me or under my direction and control and that this U.S. Public Land Survey Monument Record is correct and complete to the best of my knowledge and belief.