

# U.S. PUBLIC LAND SURVEY MONUMENT RECORD

**INSTRUCTIONS :** This record shall show the location of the corner and shall include all of the following nine elements (a through i).

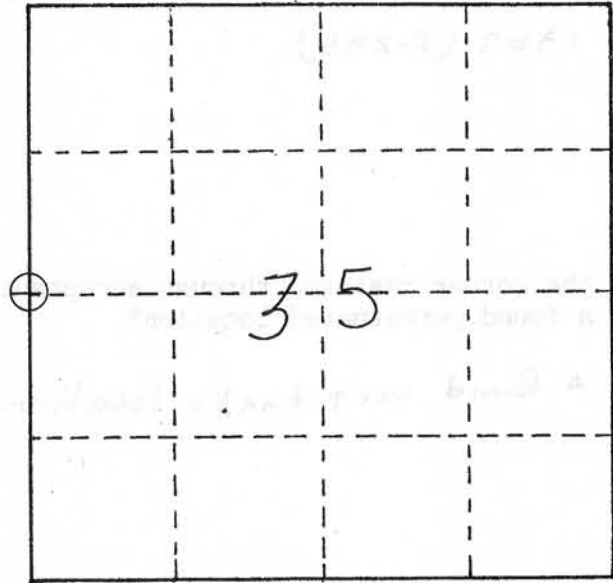
- (a) Identify the corner by reference to the U.S. public land survey system.

⊕ = Corner Monument restored.

WEST 1/4 CORNER

SECTION 35, TOWN 4 NORTH,  
RANGE 6 WEST, TOWN  
OF GLEN HAVEN (W)

Found 3/4" rebar



- (b) Describe any record evidence, monument evidence, occupational evidence, testimonial evidence or any other material evidence you considered, and whether the monument was found or placed.

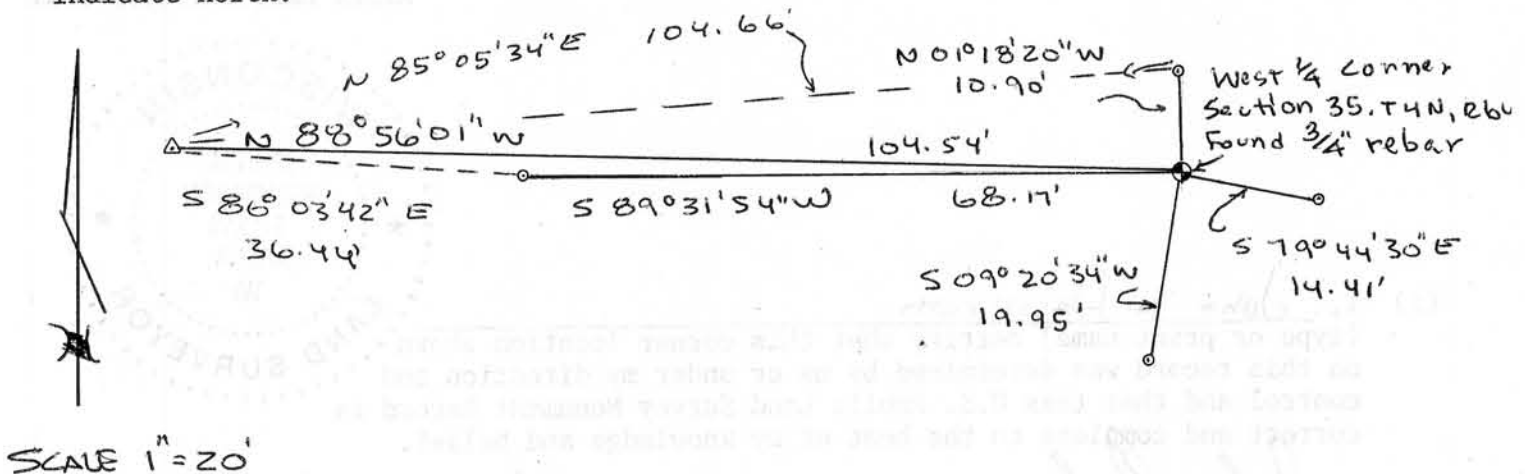
I found a 3/4" rebar as noted on boundary survey completed by Steven Boll dated 1/16/92.  
Survey completed in 1842 (A-119) notes this corner.  
Survey completed in 1852 (B-296) notes the original corner.  
I found a 1" iron pipe that Homer Ralph notes on a survey in 1969 (F-285)

- (c) In the plan view drawing below, provide reference ties to at least 4 witness monuments. Witness monuments shall be made of concrete, natural stone, iron or other equally durable material. Describe witness monuments found or placed.

- (d) Show a plan view drawing depicting the relevant monuments and reference ties which is sufficient in detail to enable accurate relocation of the corner monument if the corner monument is disturbed. Indicate north.

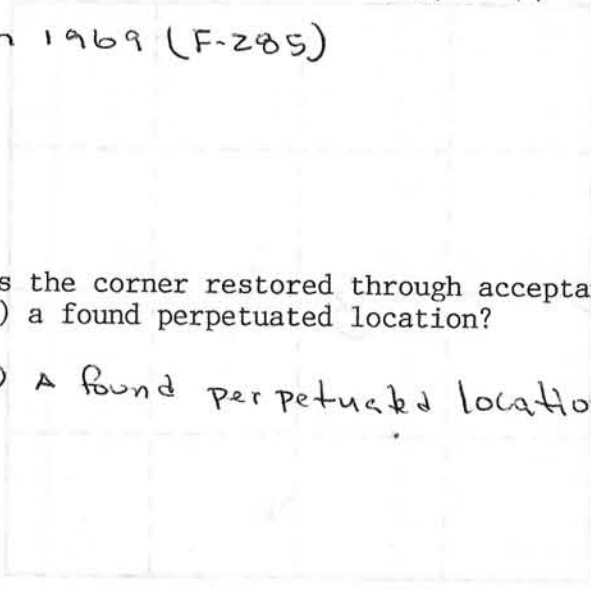
### LEGEND

- SET 5/8" x 18" rebar
- △ found 1" iron pipe



(e) Describe any material discrepancy between the location of the corner as restored or reestablished and the location of that corner as previously restored or reestablished by distance and direction. Show the discrepancy on the plan view drawing under (d), page 1. Show the distances between the corner as previously restored or reestablished and (1) the corner as restored or reestablished, and (2) to at least 2 of the witness monuments shown on the drawing in (d), page 1.

I found a 1" iron pipe as shown on survey by Homer Ralph in 1969 (F-285)



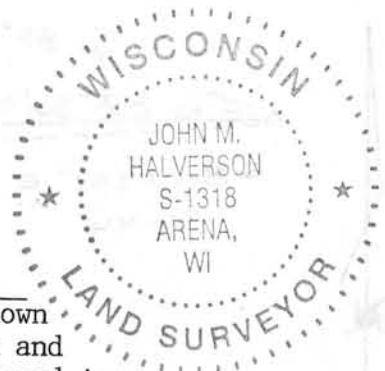
(f) Was the corner restored through acceptance of (1) an obliterated evidence location, or, (2) a found perpetuated location?

(2) A found perpetuated location

(g&h) Was the corner reestablished through lost corner proportionate methods? If so, show the method, including the directions and distances to other public land survey corners used as evidence or used for proportioning in determining the corner location.

None

Affix Land Surveyor Seal



(i) I, John M. Halverson (type or print name) certify that this corner location shown on this record was determined by me or under my direction and control and that this U.S. Public Land Survey Monument Record is correct and complete to the best of my knowledge and belief.

John M. Halverson  
Signature

8/15/11  
Date

SEP 15 2011