

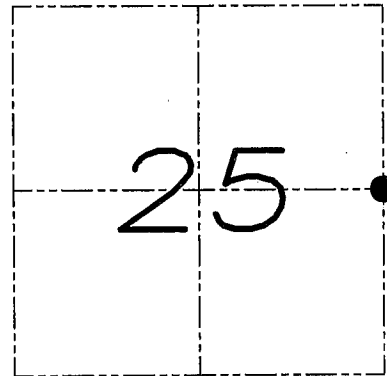
U.S. PUBLIC LAND SURVEY MONUMENT RECORD

Section 25, Town 4 North Range 6 West, Town of Glen Haven, Grant County, Wisconsin

CERTIFICATE

I, Larry L. Austin, do hereby certify that the corner location on this record was determined by me and/or under my direct supervision and that this U.S. public land survey monument record is correct and complete to the best of my knowledge and belief.

Larry L. Austin
 Larry L. Austin, S-1903 LANCASTER WI date 12.1.07



● = CORNER LOCATION

HISTORY OF CORNER

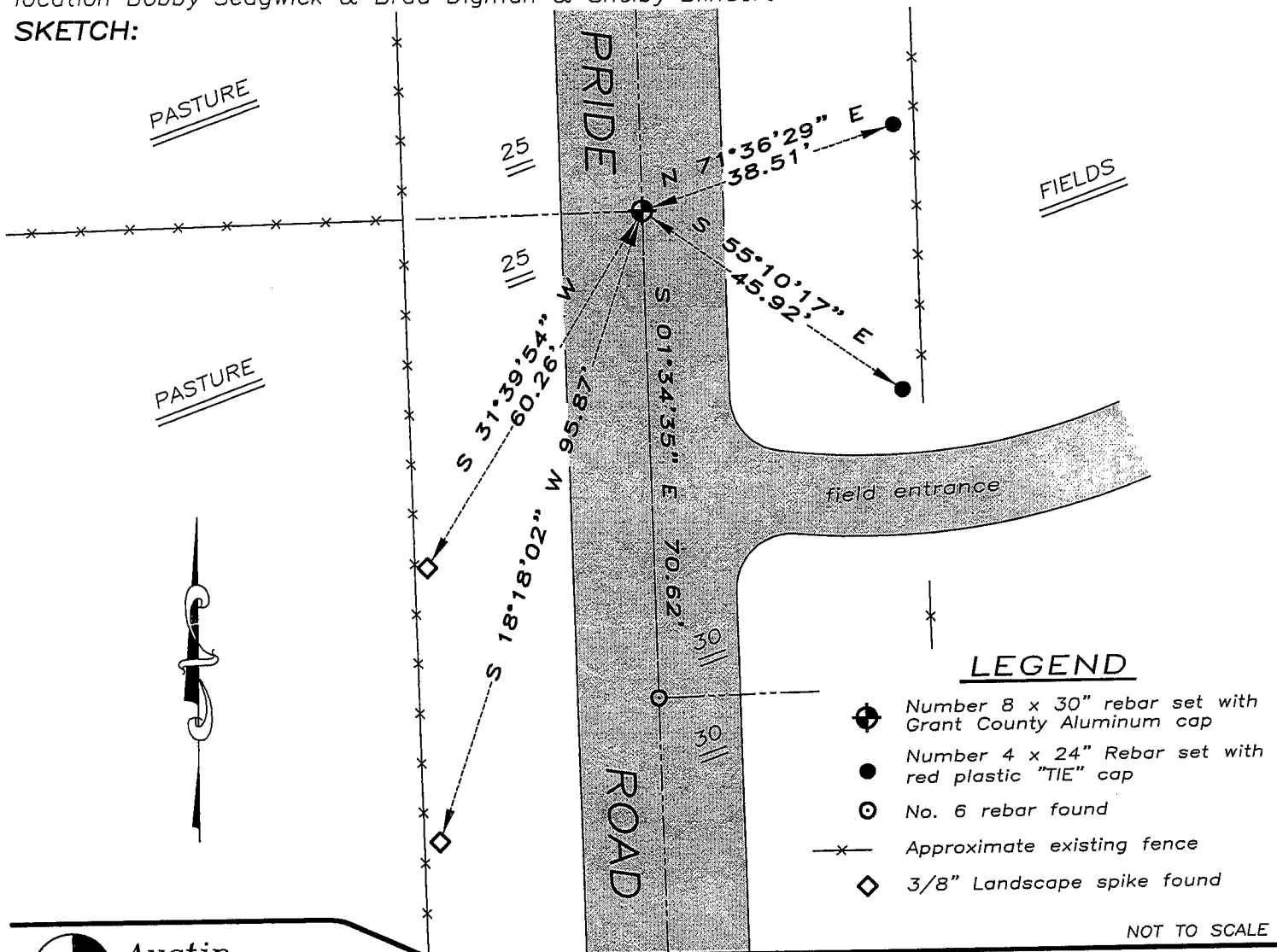
Corner was originally set by Lyon.
 No other recent record of the corner was found.

CORNER EVIDENCE FOUND

I set the corner at the proportioned offset from the existing West 1/4 of Section 30, T4N R5W. Verified this location using EDM & GPS methods.

DESCRIPTION OF CORNER AND WITNESS MONUMENTS, references and accessories used to perpetuate the original or re-established location of this corner. Witnesses to monument location Bobby Sedgwick & Brad Digman & Shelby Blindert

SKETCH:



Austin Engineering LLC

4211 HWY 81 E, LANCASTER, WI 53813
 PHONE 608-723-6363 FAX 608-723-6702

JOB NUMBER 075266
 FIELDBOOK: TDSR, 2710
 G:\T4NR5W\30
 H:\TIE\T4NR6W\100

DRAWN BY: SW AUSTIN
 APPROVED: LL AUSTIN

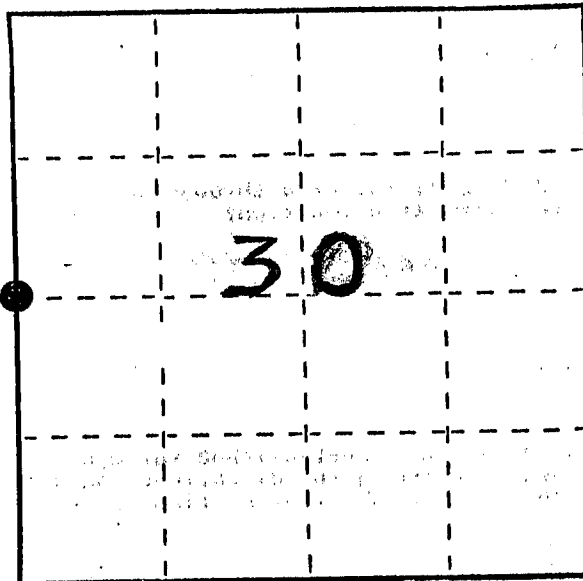
100

U. S. PUBLIC LAND SURVEY MONUMENT RECORD

INSTRUCTIONS: This record shall show the location of the corner and shall include all of the following nine elements (a through i).

- (a) Identify the corner by reference to the U.S. public land survey system.
- = Corner monument restored.

W¹/₄ CORNER, SEC. 30,
T4N, R5W, 4TH P.M.
GRANT COUNTY, WI



- (b) Describe any record evidence, monument evidence, occupational evidence, testimonial evidence or any other material evidence you considered, and whether the monument was found or placed.

NO RECORD OF CORNER SINCE ORIGINAL SURVEY IN 1832; I SET THE CORNER BASED ON PROPORTIONED JOG & MEASUREMENT TO AN OCCUPATION FENCE WEST.

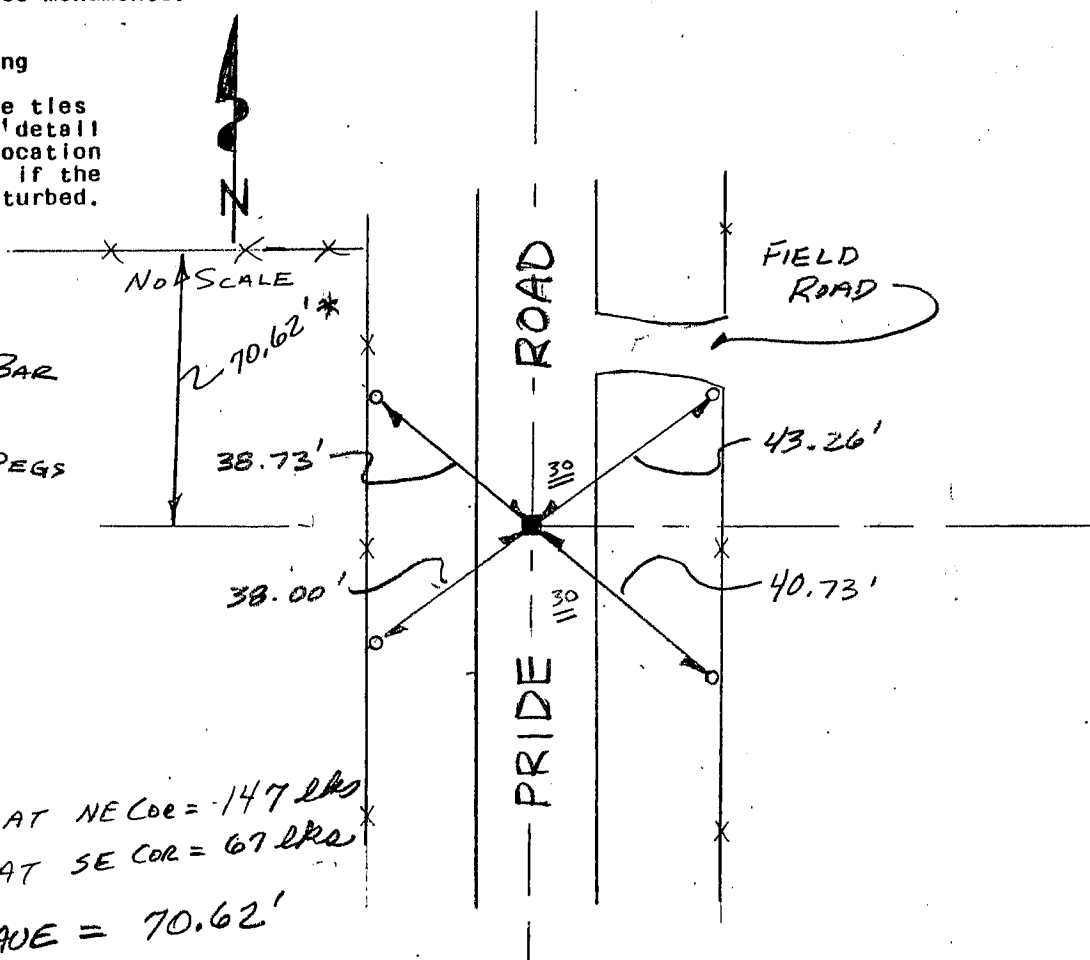
- (c) In the plan view drawing below, provide reference ties to at least 4 witness monuments, or, if the location is within a municipality, to at least 2 witness monuments. (Witness monuments shall be made of concrete, natural stone, iron or other equally durable material, ~~except~~ wood.) Describe witness monuments.

- (d) Show a plan view drawing depicting the relevant monuments and reference ties which is sufficient in detail to enable accurate relocation of the corner monument if the corner monument is disturbed. Indicate north.

LEGEND

- 3/4" x 24" SMOOTH BAR SET
- 3/8" x 12" STEEL PEGS SET

FENCELINE



* JOG AT NE COR = 147 lks
 JOG AT SE COR = 67 lks
 AVE = 70.62'

(e) Describe any material discrepancy between the location of the corner as restored or reestablished and the location of that corner as previously restored or reestablished by distance and direction. Show the discrepancy on the plan view drawing under (d), above. Show the distances between the corner as previously restored or reestablished and (1) the corner as restored or reestablished, and (2) to at least 2 of the witness monuments shown on the drawing in (d), above.

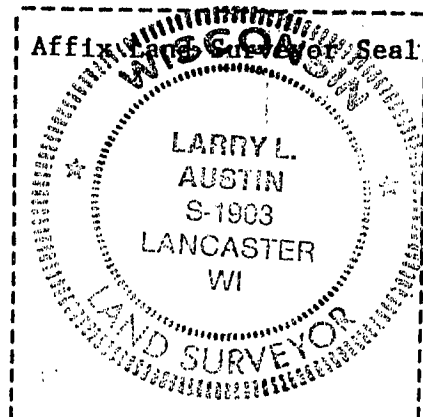
NONE

(f) Was the corner restored through acceptance of (1) an obliterated evidence location, or, (2) a found perpetuated location?

PERPETUATED LOCATION

(g&h) Was the corner reestablished through lost corner proportionate methods? If so, show the method, including the directions and distances to other public land survey corners used as evidence or used for proportioning in determining the corner location?

NO.



(1) I, LARRY L. AUSTIN
(type or print name) certify that the corner location shown on this record was determined by me or under my direction and control and that this U.S. Public Land Survey Monument Record is correct and complete to the best of my knowledge and belief.

Gary R. Aust
Signature

1-15-95
Date