

U.S. PUBLIC LAND SURVEY MONUMENT RECORD - GRANT COUNTY, WI

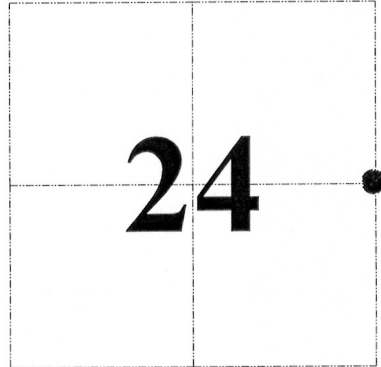
Section 24, Town 4 North Range 6 West, Town of Glen Haven West

CERTIFICATE:

I, Chris D. Higgins, do hereby certify that the corner location on this record was determined by me and/or under my direct supervision and that this U.S. Public Land Survey Monument Record is correct and complete to the best of my knowledge and belief.

Dated this 31st day of October, 20 12.

Chris D Higgins
Chris D. Higgins, RLS-2937-8



● = CORNER LOCATION

HISTORY OF CORNER ESTABLISHMENT:

No monumentation or recorded data was found for this corner.

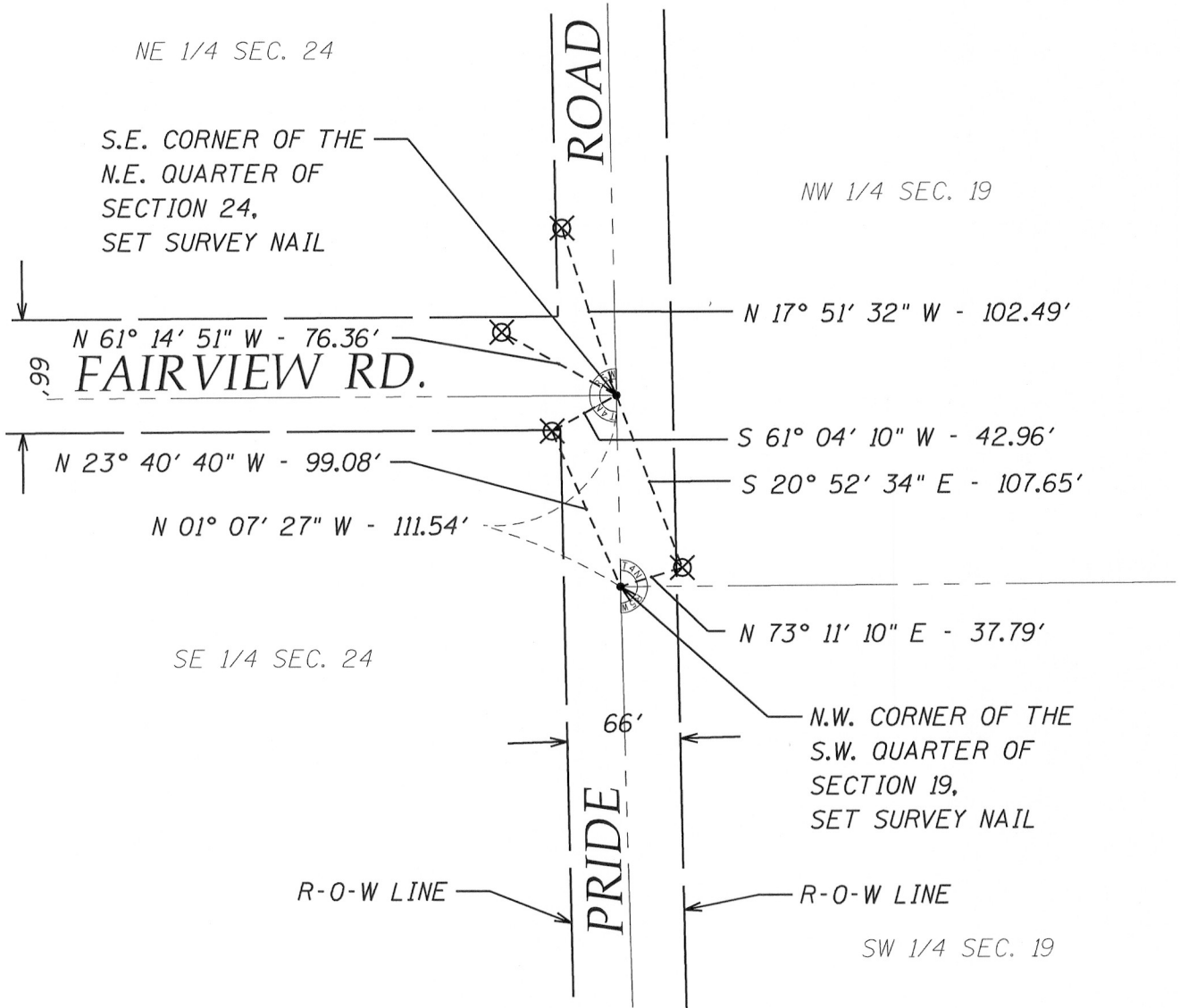
DESCRIPTION OF CORNER EVIDENCE FOUND:

Corner set by proration from existing corners and occupation lines north and south of corner.
The location fits occupation.

DESCRIPTION OF CORNER AND WITNESS MONUMENTS, references and accessories used to perpetuate the original or re-established location of this corner. Witnesses to corner location Ben Scheffner and Rey Munoz

SKETCH:

⊗ = 3/4" x 36" Rebar Set



NOV 27 2012

CERTIFIED LAND CORNER

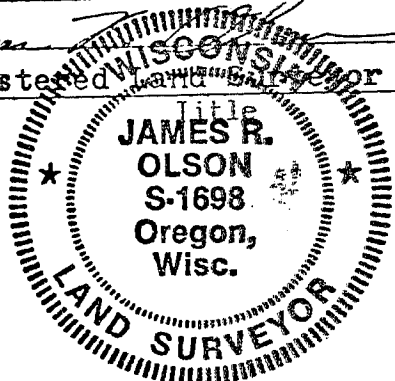
STATE OF WISCONSIN) S.S.
 COUNTY OF GRANT)

CERTIFICATE

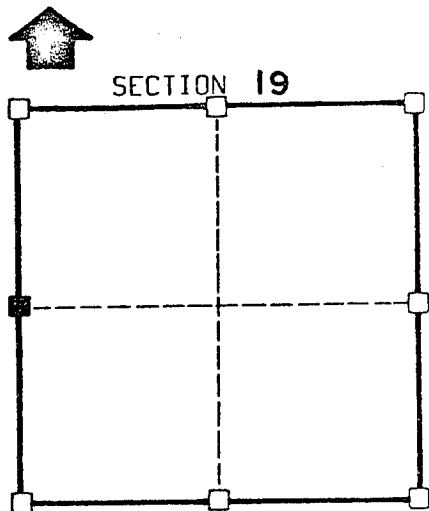
I, James R. Olson, do hereby certify that on the 12 day of July 1983, I found (evidence) (~~no evidence~~) of the West 1/4 corner of section 18, T 4N, R 5W, Fourth Principal Meridian, and I re-established said corner according to the Wisconsin Statutes as shown and described hereon.

Dated this 27 day of July 1983

Registered Land Surveyor



Seal



■ = corner location

T 4 N R 5 W

Town of: GLEN HAVEN

History of original corner establishment:

None since original survey

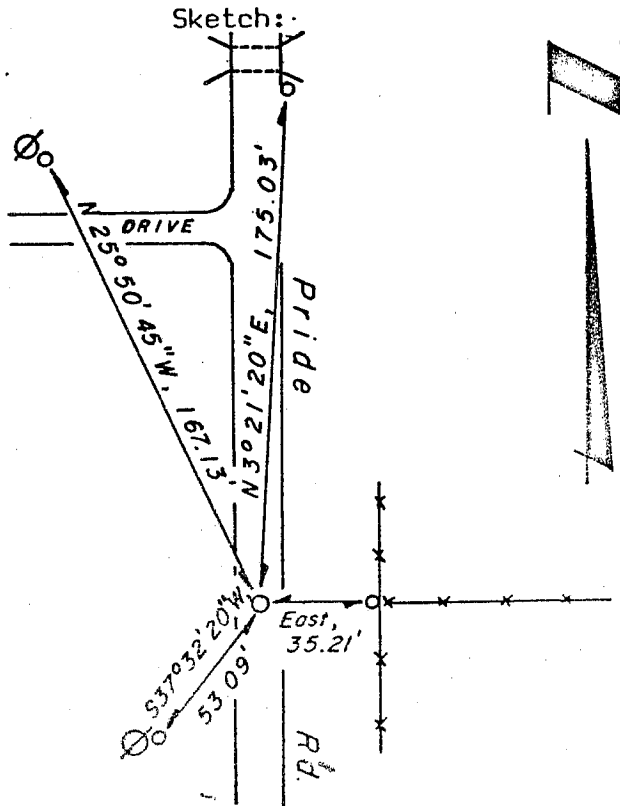
Description of corner evidence found:

Fence line running east and centerline of town road running north-south

Description of corner and witness monuments, references and accessories used to perpetuate the original or re-established location of this corner:

Witnesses to corner location:

Used existing evidence to set corner



Legend

- 1" Ø IRON PIPE
- ⊙ POWER POLE
- *—*—* FENCELINE

VEY CONTROL ORDER

horizontal

vertical

WISCONSIN COORDINATE SYSTEM

Corner	East (X)	North (Y)	Elevation (Z)	Notes