

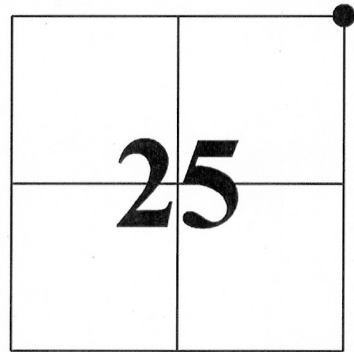
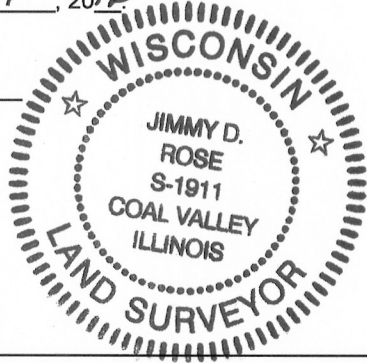
**U.S. PUBLIC LAND SURVEY MONUMENT RECORD - GRANT COUNTY, WI**  
 Section 25, Town 4 North Range 6 West, Town of Glen Haven West

**CERTIFICATE:**

I, Jimmy D. Rose, do hereby certify that the corner location on this record was determined by me and/or under my direct supervision and that this U.S. Public Land Survey Monument Record is correct and complete to the best of my knowledge and belief.

Dated this 12<sup>th</sup> day of November, 2012

*Jimmy D. Rose*  
 Jimmy D. Rose S-1911



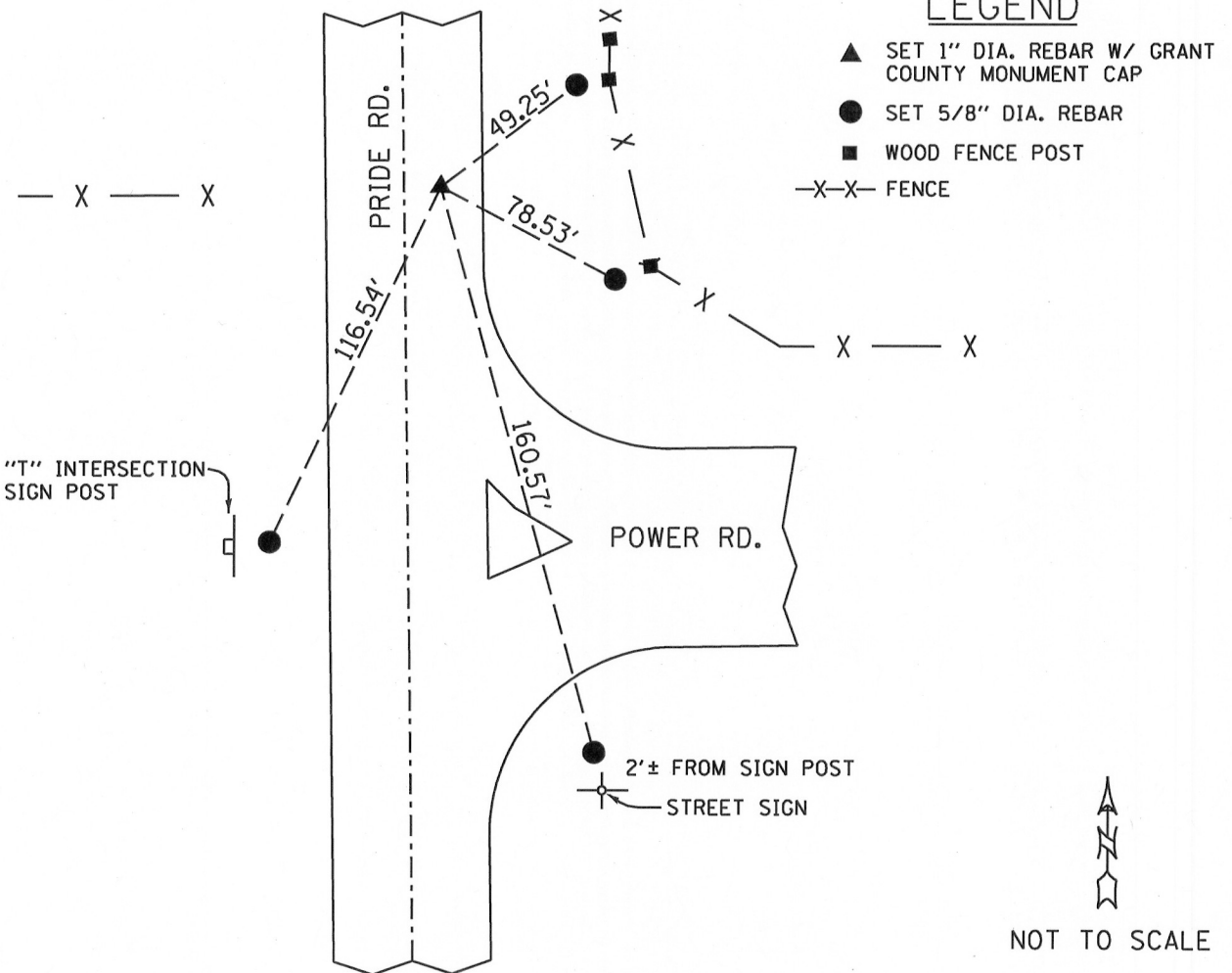
● = CORNER LOCATION

HISTORY OF CORNER ESTABLISHMENT: NO PRIOR RECORD OF CORNER SINCE ORIGINAL GOVERNMENT SURVEYS WAS UNCOVERED.

DESCRIPTION OF CORNER EVIDENCE FOUND: TRAVERSE OF SECTION 25 - CORNER LOCATION DETERMINED USING OTHER FOUND CORNERS AND OCCUPATION EVIDENCE.

DESCRIPTION OF CORNER AND WITNESS MONUMENTS, references and accessories used to perpetuate the original or re-established location of this corner.

**SKETCH:**



NOT TO SCALE