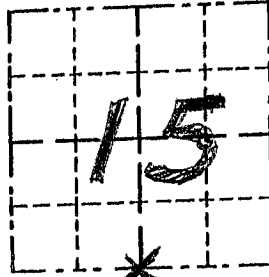


# GRANT COUNTY

## Survey Monument Record

TYPE OF MONUMENT 3/4" REBAR  
 STATE PLANE COORDINATES: N \_\_\_\_\_  
 E \_\_\_\_\_  
 ELEVATION — M.S.L. DATUM: \_\_\_\_\_  
 THETA ANGLE: \_\_\_\_\_  
 FIELD BOOK: 92-16  
 PAGE \_\_\_\_\_

CORNER NO. 66  
 SECTION 15  
 TOWN 4N  
 RANGE 6W  
S1/4



LOCATION  
 (Indicated by "X")

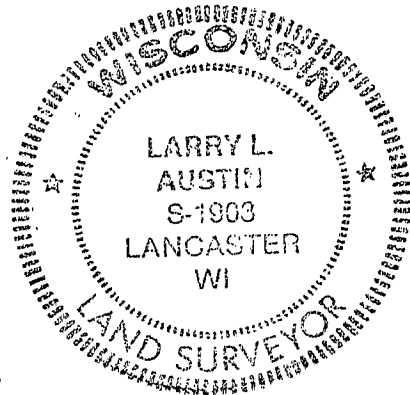


### BASIS FOR MONUMENT LOCATION

(Use reverse side if necessary)

Show info such as: History of corner, with reference to Vol. and pg., dates, surveyor; exact description of monument replaced; if location computed, by taped or EDM traverse; landowner, remarks, etc.

SEAL:



FOUND & ACCEPTED 3/4" REBAR  
SET BY STEVEN BOLL-1992  
COULD NOT FIND THE TIES  
DUE TO RECENT BULLDOZING;  
SET NEW TIES FOR THE  
PREVIOUSLY SET CORNER  
(ORIGINAL CORNER WAS SET IN  
1832 BY ROBERT CLARK)

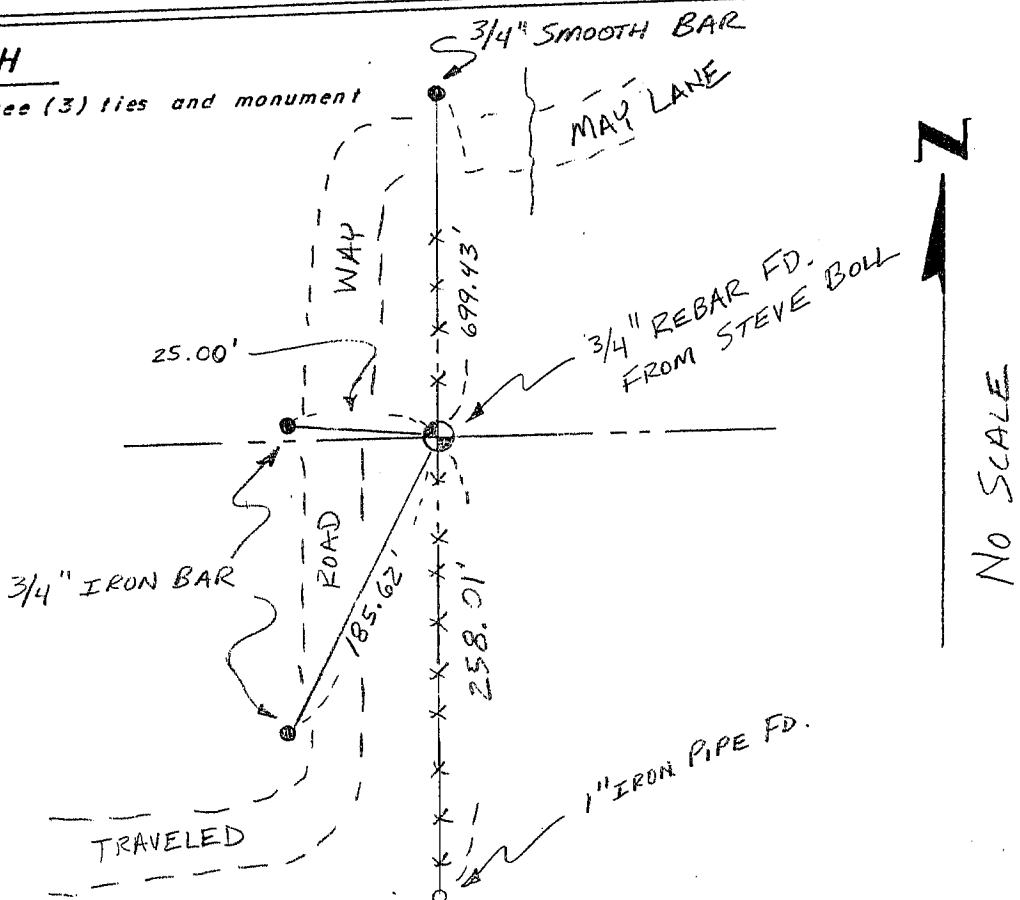
CERTIFIED CORRECT

Larry L. Austin  
 Registered Land Surveyor

DATE: 2/16/95

### TIE SKETCH

Show at least three (3) ties and monument



NO SCALE

U.S. PUBLIC LAND SURVEY CORNER RECORD

N 1/4 CORNER, SECTION 22 T. 4 N., R. 6 W., TOWN OF GLEN HAVEN, GRANT COUNTY  
(WEST PART)

STATE PLANE COORDINATES:

NORTH (Y) \_\_\_\_\_ ELEVATION \_\_\_\_\_

EAST (X) \_\_\_\_\_ THETA ANGLE \_\_\_\_\_

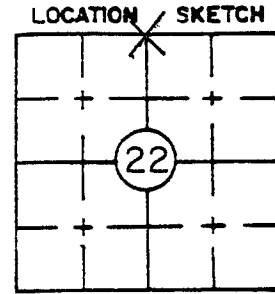
TYPE OF MONUMENT FOUND NONE

TYPE OF MONUMENT SET 3/4" IRON ROD

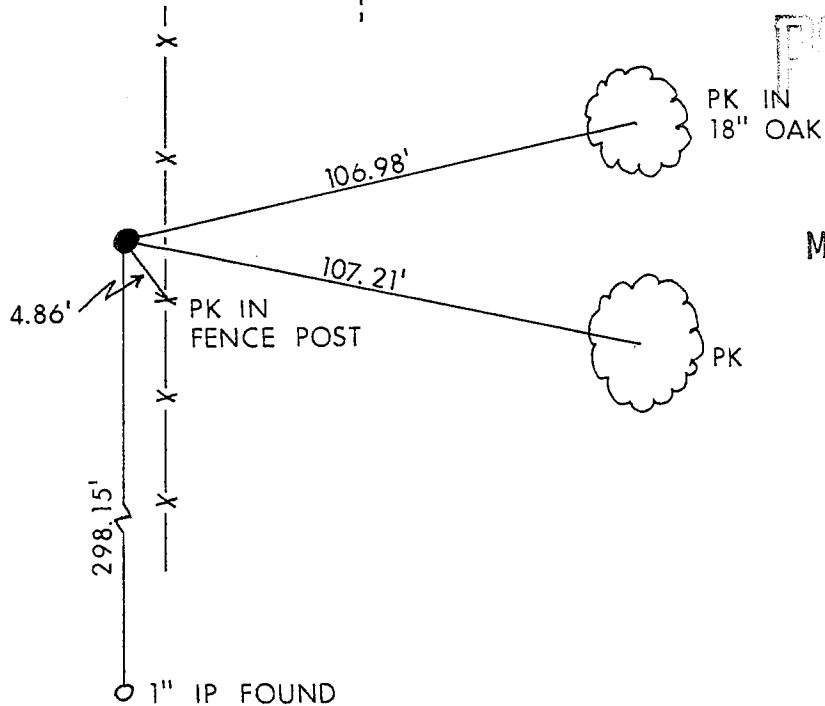
LOCATED OR ESTABLISHED BY STEVEN R. BOLL R.L.S. NO. S- 1217

FIELD NOTES FILED AT KOHLER CO., KOHLER, WI

DATE OF SURVEY JAN. 16, 1992 PROJECT NO., BOOK, PAGE "EAGLE VALLEY"



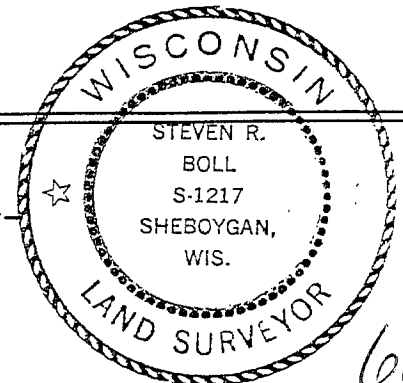
TIE SKETCH



RECOVERY PROCEDURE

NO EVIDENCE OF ORIGINAL CORNER FOUND; CORNER SET BASED ON EXISTING PROPERTY CORNER TO THE SOUTH AND EXISTING FENCE TO THE EAST. VERIFIED BY SURVEY OF SECTION 22.

STEVEN R. BOLL, certify that the corner location shown on this record was determined by me or under my direction and control and that this U.S. Public Land Survey Monument Record is correct to the best of my knowledge and belief.



date 1-16-92

66