

AUG 10 1999

GRANT COUNTY CERTIFIED LAND CORNER

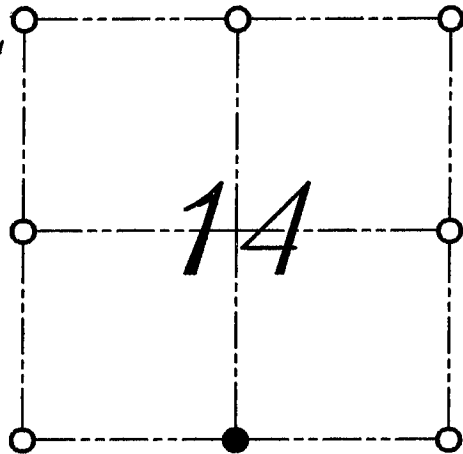
CORNER NUMBER 64

CERTIFICATE:

I, LARRY L. AUSTIN, DO HEREBY CERTIFY THAT ON TWENTY-THIRD DAY OF JULY, 1999, I FOUND OCCUPATIONAL EVIDENCE OF THE SOUTH 1/4 CORNER SECTION 14, TOWN 4 NORTH, RANGE 6 WEST, OF THE FOURTH PRINCIPAL MERIDIAN, AND I RE-ESTABLISHED SAID CORNER ACCORDING TO THE WISCONSIN STATUTES AS SHOWN AND DESCRIBED HEREON.

DATED THIS TWENTY-EIGHTH DAY OF JULY, 1999

Larry L. Austin
LARRY L. AUSTIN S-1903



● = CORNER LOCATION

SOUTH 1/4 CORNER OF SECTION 14, T 4 N R 6 W TOWN OF GLEN HAVEN

HISTORY OF ORIGINAL CORNER ESTABLISHMENT:

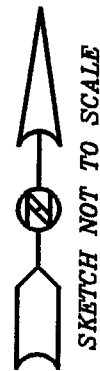
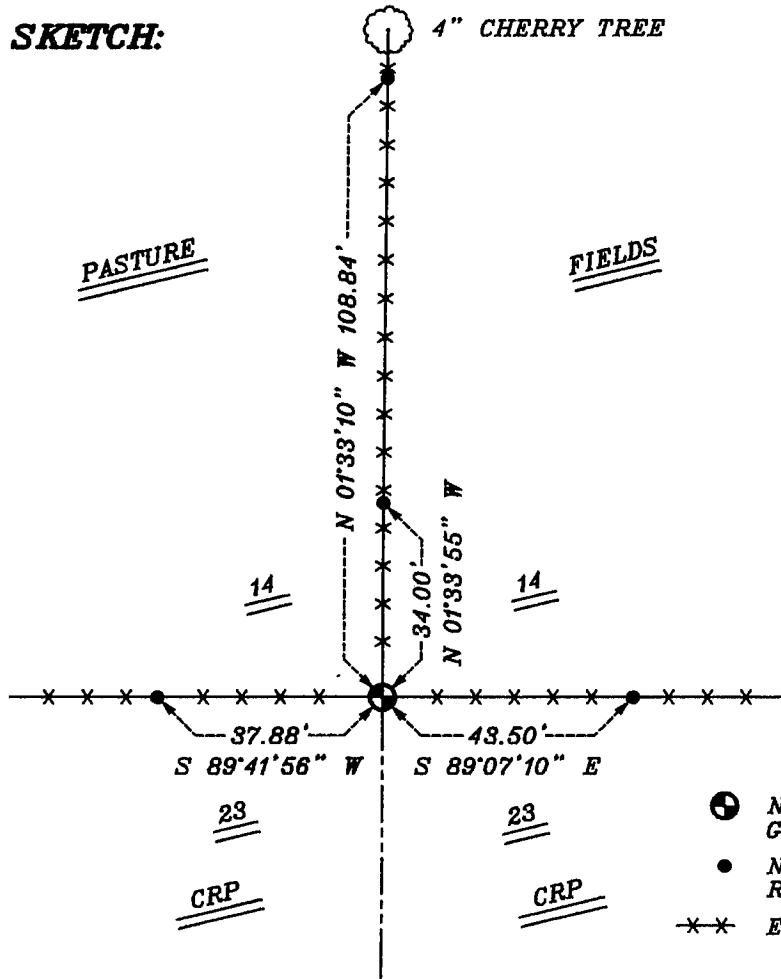
CORNER WAS SET IN 1832 BY ROBERT CLARK. CORNER WAS ALSO MEASURED TO IN 1848 BY GEO R. STUNTZ.

DESCRIPTION OF CORNER EVIDENCE FOUND:

I FOUND AN OCCUPIED FENCE CORNER AND ACCEPTED THIS LOCATION AFTER AN E.D.M. AND G.P.S. SURVEY OF THE AREA.

DESCRIPTION OF CORNER AND WITNESS MONUMENTS, REFERENCES AND ACCESSORIES USED TO PERPETUATE THE ORIGINAL OR RE-ESTABLISHED LOCATION OF THIS CORNER:
WITNESS TO THE CORNER LOCATION: BOBBY SEDGWICK ; SHELBY BLINDERT

SKETCH:



LEGEND

- ⊕ NUMBER 8 X 30" REBAR SET WITH GRANT COUNTY ALUMINUM CAP
- NUMBER 4 X 24" REBAR SET WITH RED PLASTIC CAP
- **-** EXISTING FENCE LOCATION