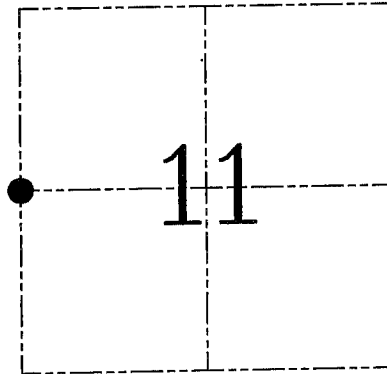
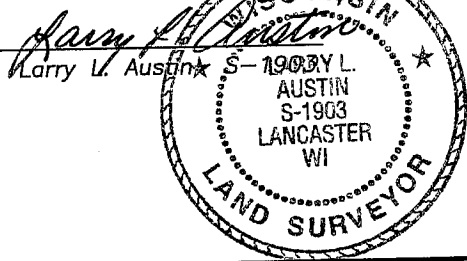


U.S. PUBLIC LAND SURVEY MONUMENT RECORD – GRANT COUNTY, WI
Section 11, Town 4 North Range 6 West, Town of Glen Haven

CERTIFICATE

I, Larry L. Austin, do hereby certify that the corner location on this record was determined by me and/or under my direct supervision and that this U.S. public land survey monument record is correct and complete to the best of my knowledge and belief.

Dated this 1st day of June, 2004



● = CORNER LOCATION

HISTORY OF CORNER ESTABLISHMENT

Corner was originally set in 1832 by Clark.
 No other record of the corner was found.

DESCRIPTION OF CORNER EVIDENCE FOUND

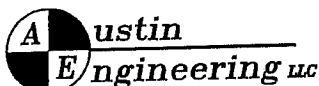
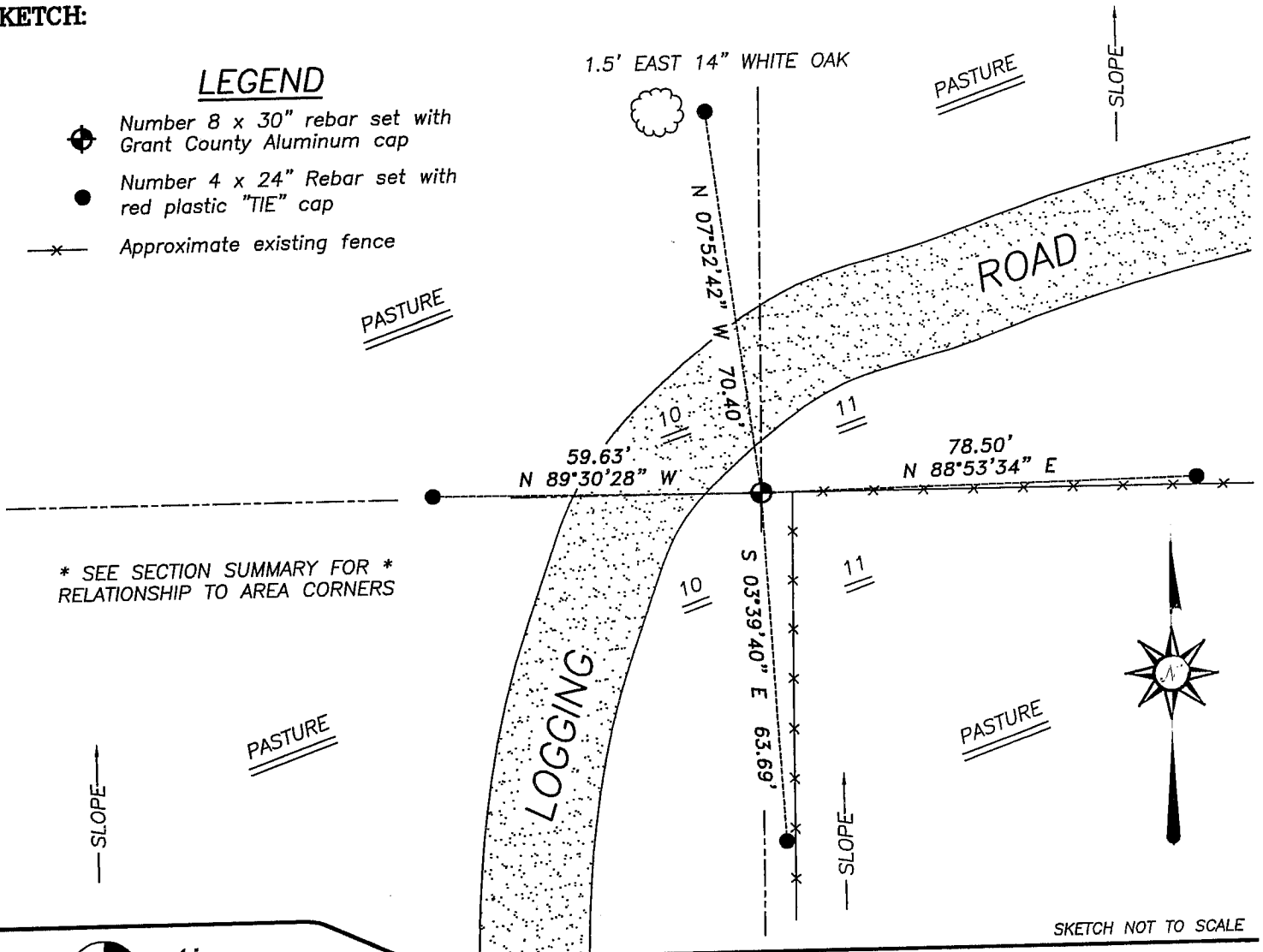
I found an occupied fence corner and accepted it's location after an EDM & GPS traverse of the area.

DESCRIPTION OF CORNER AND WITNESS MONUMENTS, references and accessories used to perpetuate the original or re-established location of this corner. Witnesses to corner location Bobby Sedgwick & Shane Austin & Brad Hazen

SKETCH:

LEGEND

- Number 8 x 30" rebar set with Grant County Aluminum cap
- Number 4 x 24" Rebar set with red plastic "TIE" cap
- *— Approximate existing fence



4211 HWY 81 E, LANCASTER, WI 53813
 PHONE 608-723-6363 FAX 608-723-6702

JOB NUMBER 04S092
 FIELDBOOK: TSDR, 2113B, 2329
 G:\T4NR6W\10
 H:\TIE\T4NR6W\38

DRAWN BY: SW AUSTIN
 APPROVED: LL AUSTIN