

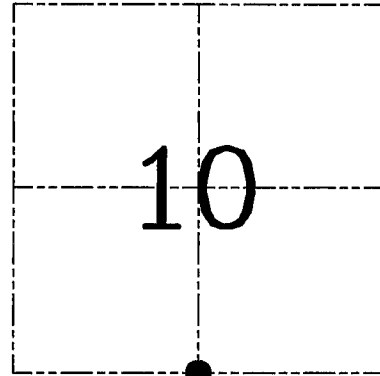
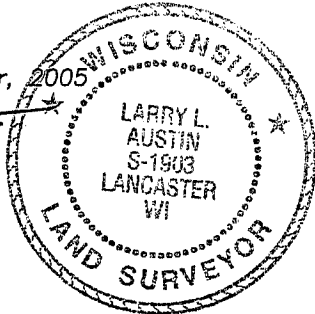
U.S. PUBLIC LAND SURVEY MONUMENT RECORD – GRANT COUNTY, WI
Section 10, Town 4 North Range 6 West, Town of Glen Haven

CERTIFICATE

I, Larry L. Austin, do hereby certify that the corner location on this record was determined by me and/or under my direct supervision and that this U.S. public land survey monument record is correct and complete to the best of my knowledge and belief.

Dated this 30th day of December, 2005

Larry L. Austin
 Larry L. Austin S-1903



● = CORNER LOCATION

HISTORY OF CORNER ESTABLISHMENT

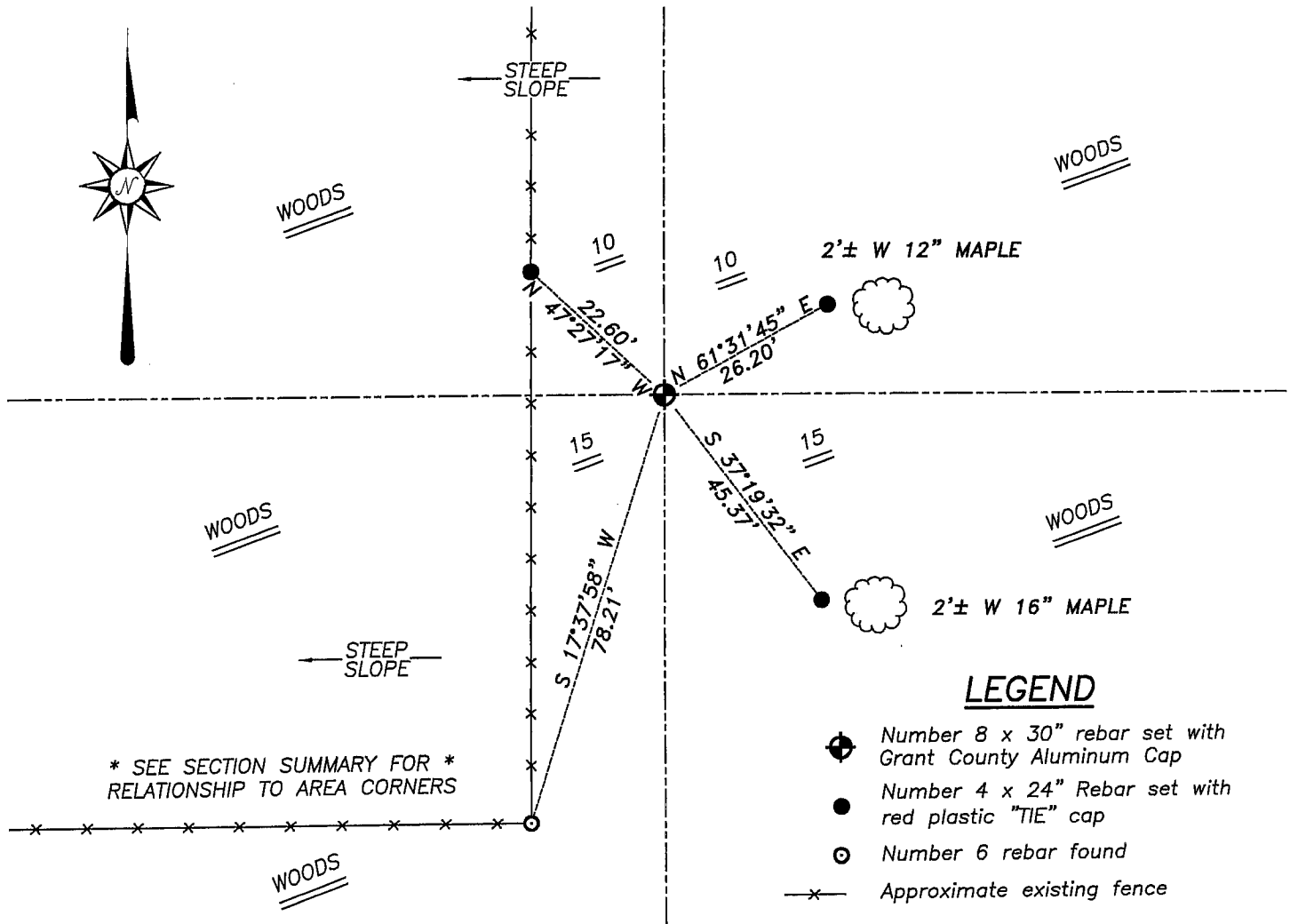
Corner was originally set in 1832 by Clark. In 1858 Hayden measured to the original corner. In 1854 Dean measured to the corner while surveying the plat of Glen Haven. In 1981 Davis set a #6 iron bar. In 1995 I filed a tiesheet on this corner.

DESCRIPTION OF CORNER EVIDENCE FOUND

I was unable to locate evidence of the original bearing trees. I did not accept the #6 iron bar. I reset the corner based on the Plat of Glen Haven. This location fit evidence along Sections 10 and 15. Verified this location using EDM & GPS methods.

DESCRIPTION OF CORNER AND WITNESS MONUMENTS, references and accessories used to perpetuate the original or re-established location of this corner. Witnesses to corner location Bobby Sedgwick & Brad Digman & Shane Austin

SKETCH:

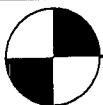


LEGEND

- Number 8 x 30" rebar set with Grant County Aluminum Cap
- Number 4 x 24" Rebar set with red plastic "TIE" cap
- Number 6 rebar found
- x— Approximate existing fence

* SEE SECTION SUMMARY FOR *
 RELATIONSHIP TO AREA CORNERS

SKETCH NOT TO SCALE



Austin
Engineering LLC

4211 HWY 81 E, LANCASTER, WI 53813
 PHONE 608-723-6363 FAX 608-723-6702

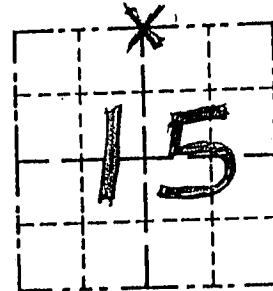
JOB NUMBER:
 FIELDBOOK: TDSR, 2113
 G:\T4NR6W\15
 H:\TIE\T4NR6W\46

DRAWN BY: ML DIGMAN
 APPROVED: LL AUSTIN

Survey Monument Record

CORNER NO. 46
SECTION 15
TOWN 4 N
RANGE 6 W
N 1/4 Cor

TYPE OF MONUMENT 3/4" BAR FOUND
STATE PLANE COORDINATES: N _____
E _____
ELEVATION — M.S.L. DATUM: _____
THETA ANGLE: _____
FIELD BOOK: 92-16
PAGE _____



LOCATION
(Indicated by "X")

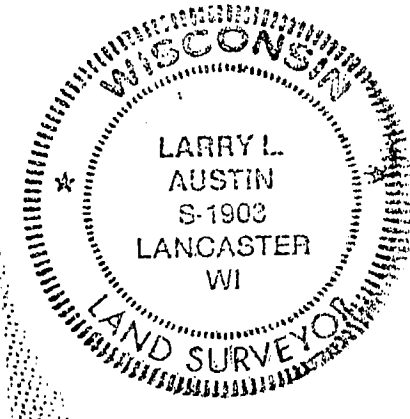
BASIS FOR MONUMENT LOCATION

(Use reverse side if necessary)

Show info such as: History of corner, with reference to Vol. and pg., dates, surveyor; exact description of monument replaced; if location computed, by taped or EDM traverse; landowner, remarks, etc.

SEAL:

ORIGINAL CORNER SET IN 1832 by ROBERT CLARK FOUND A 3/4" BAR USED BY DAVE DAVIS IN A 1981 SURVEY. I ACCEPTED ITS LOCATION AFTER EDM TRAVERSE OF THE AREA.



CERTIFIED CORRECT

Larry L. Austin
Registered Land Surveyor
DATE: 2/12/95

TIE SKETCH

Show at least three (3) ties and monument

- LEGEND
- 3/4" REBAR FOUND
 - 3/8" x 12" STEEL SPIKE SET AS TIE
 - EXISTING FENCE

