

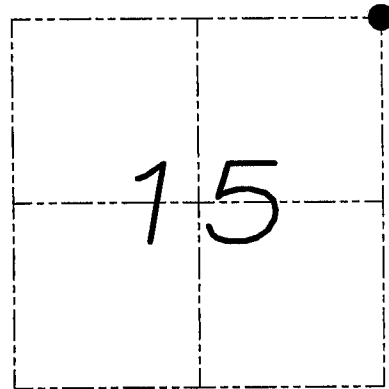
U.S. PUBLIC LAND SURVEY MONUMENT RECORD

Section 15, Town 4 North Range 6 West, Town of Glen Haven, Grant County, Wisconsin

CERTIFICATE

I, Larry L. Austin, do hereby certify that the corner location on this record was determined by me and/or under my direct supervision and that this U.S. public land survey monument record is correct and complete to the best of my knowledge and belief.

Larry L. Austin
 Larry L. Austin, *5-5-08* date
 199303
 LANCASTER
 WI
 LAND SURVEYOR



● = CORNER LOCATION

HISTORY OF CORNER

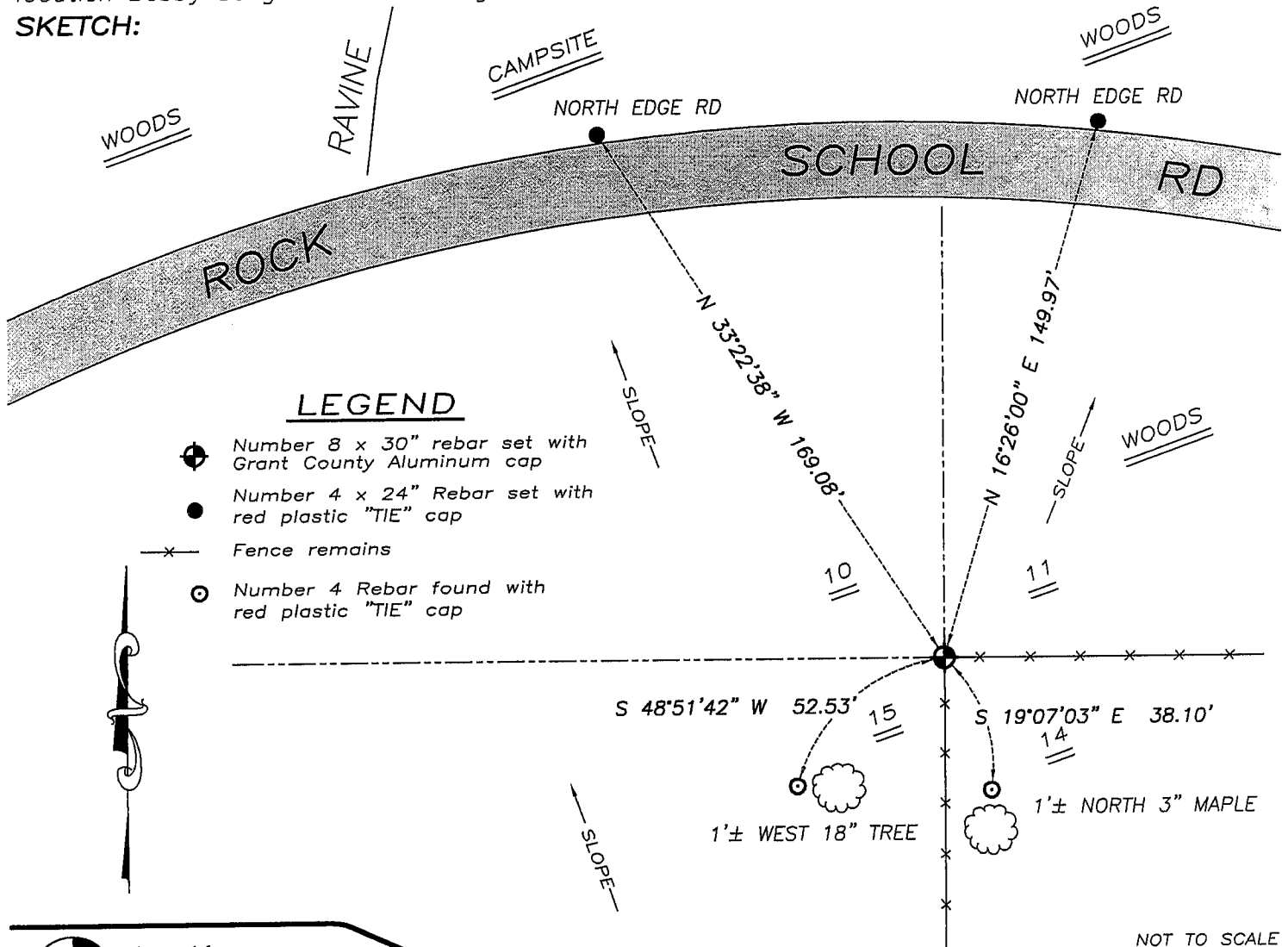
Corner was originally set in 1832 by Clark. In 1859 Hayden found the original corner. No recent record of the corner was found.

CORNER EVIDENCE FOUND

I reset the corner based on occupational evidence. Verified this location using EDM & GPS methods.

DESCRIPTION OF CORNER AND WITNESS MONUMENTS, references and accessories used to perpetuate the original or re-established location of this corner. Witnesses to monument location Bobby Sedgwick & Brad Digman & Shane Austin

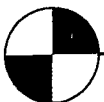
SKETCH:



LEGEND

- Number 8 x 30" rebar set with Grant County Aluminum cap
- Number 4 x 24" Rebar set with red plastic "TIE" cap
- x— Fence remains
- Number 4 Rebar found with red plastic "TIE" cap

NOT TO SCALE



Austin Engineering LLC

4211 HWY 81 E, LANCASTER, WI 53813
 PHONE 608-723-6363 FAX 608-723-6702

JOB NUMBER
 07S352-HUNDLEY
 FIELDBOOK: TDSR
 G:\T4NR6W\10
 H:\TIE\T4NR6W\45

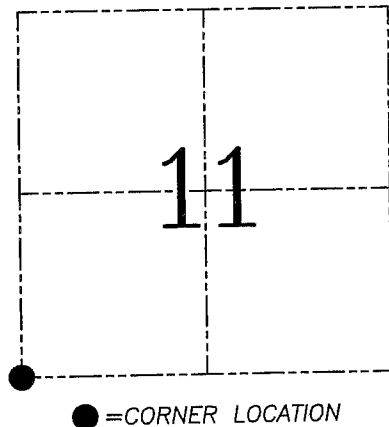
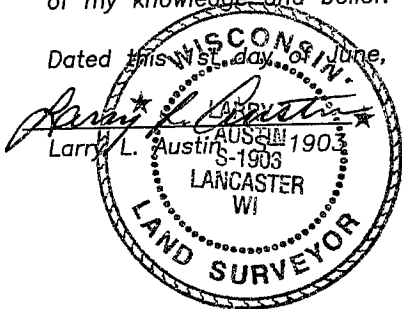
DRAWN BY: SW AUSTIN
 APPROVED: LL AUSTIN

U.S. PUBLIC LAND SURVEY MONUMENT RECORD – GRANT COUNTY, WI
Section 11, Town 4 North Range 6 West, Town of Glen Haven

CERTIFICATE

I, Larry L. Austin, do hereby certify that the corner location on this record was determined by me and/or under my direct supervision and that this U.S. public land survey monument record is correct and complete to the best of my knowledge and belief.

Dated this 15th day of June, 2004



HISTORY OF CORNER ESTABLISHMENT

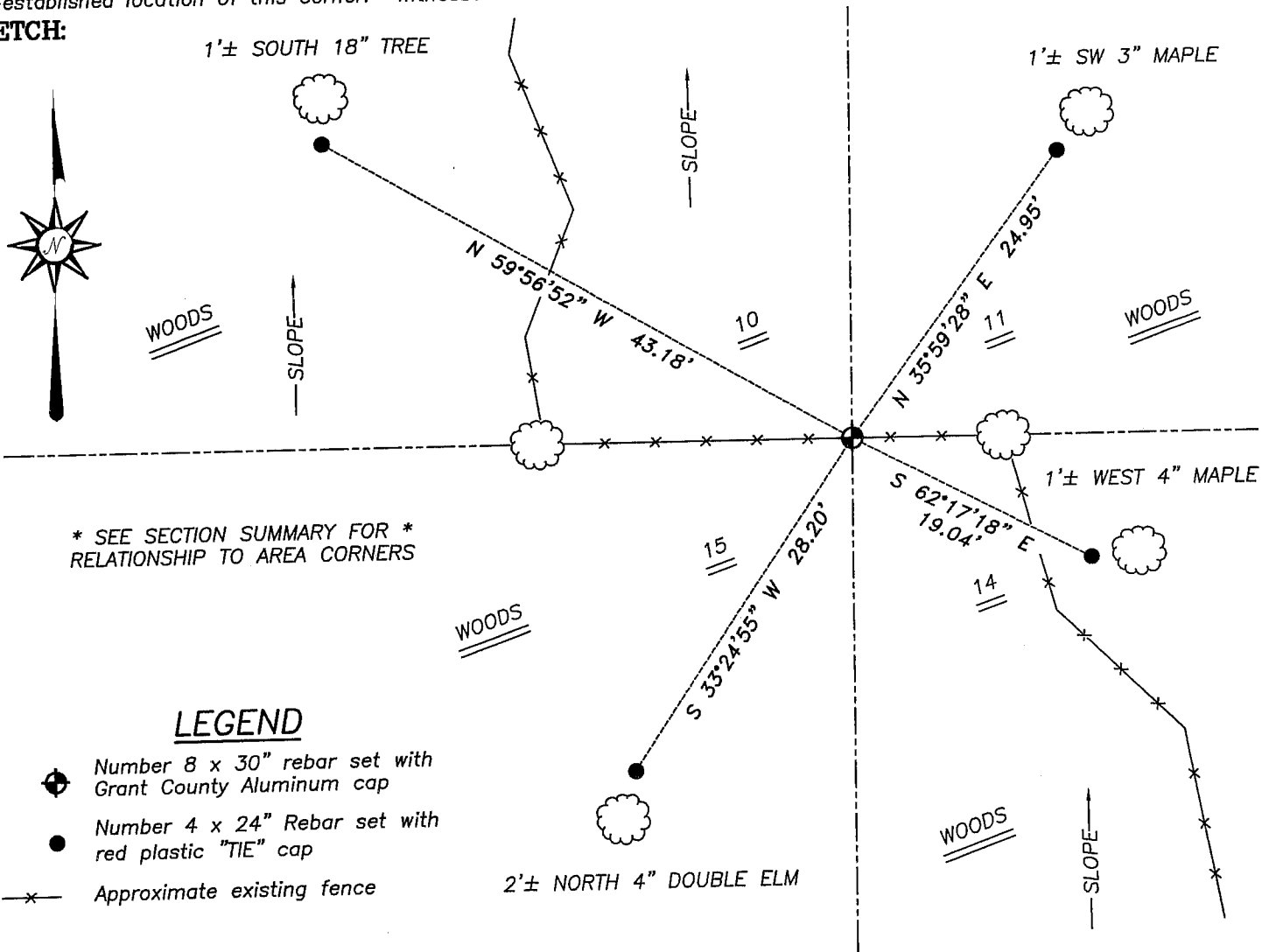
Corner was originally set in 1832 by Clark.
 I tied to the corner on previous surveys.

DESCRIPTION OF CORNER EVIDENCE FOUND

I reset the corner based on a fence East–West for Northing. Easting was established based on proportionate methods to adjoining corners. Verified this location using EDM & GPS methods.

DESCRIPTION OF CORNER AND WITNESS MONUMENTS, references and accessories used to perpetuate the original or re-established location of this corner. Witnesses to corner location Bobby Sedgwick & Shane Austin & Shelby Blindert

SKETCH:

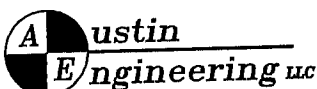


* SEE SECTION SUMMARY FOR *
 RELATIONSHIP TO AREA CORNERS

LEGEND

- Number 8 x 30" rebar set with Grant County Aluminum cap
- Number 4 x 24" Rebar set with red plastic "TIE" cap
- x— Approximate existing fence

SKETCH NOT TO SCALE



4211 HWY 81 E, LANCASTER, WI 53813
 PHONE 608-723-6363 FAX 608-723-6702

JOB NUMBER 04S092
 FIELDBOOK: TSDR, 2113B, 2329
 G:\T4NR6W\10
 H:\TIE\T4NR6W\45

DRAWN BY: SW AUSTIN
 APPROVED: LL AUSTIN