

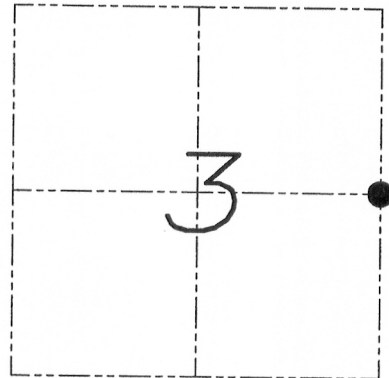
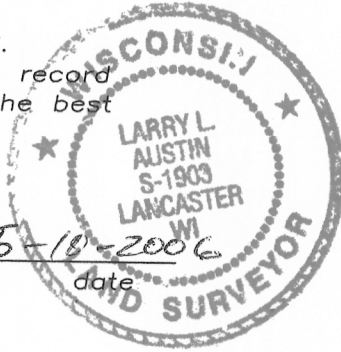
U.S. PUBLIC LAND SURVEY MONUMENT RECORD

Section 3, Town 4 North Range 6 West, Town of
Glen Haven, Grant County, Wisconsin

CERTIFICATE

I, Larry L. Austin, do hereby certify that the corner location on this record was determined by me and/or under my direct supervision and that this U.S. public land survey monument record is correct and complete to the best of my knowledge and belief.

Larry L. Austin 5-10-2006
Larry L. Austin, S-1903 date



● = CORNER LOCATION

HISTORY OF CORNER

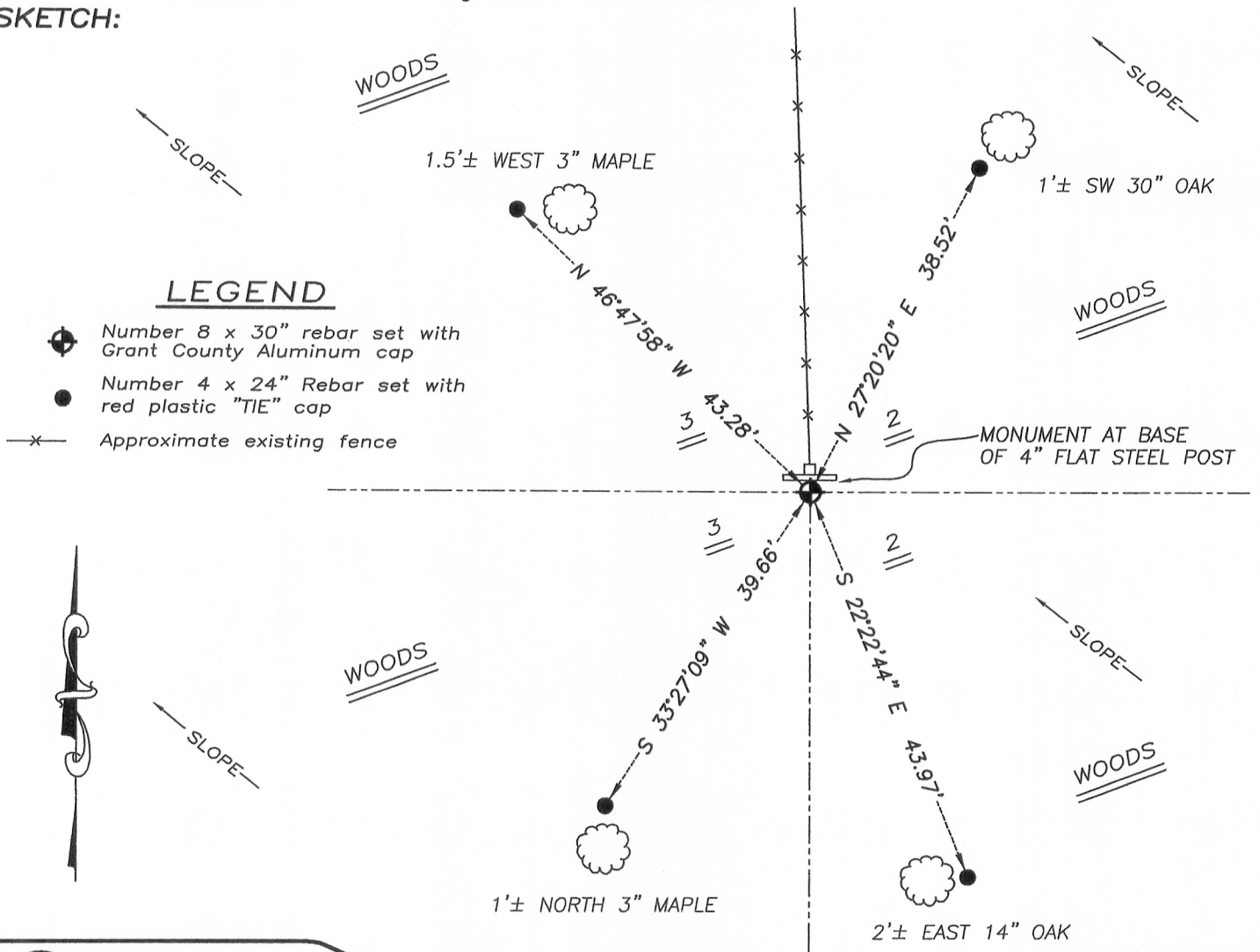
Corner was originally set in 1832 by Clark.
No other record of the corner was found.

CORNER EVIDENCE FOUND

Monument was set at physical evidence of fence North.

DESCRIPTION OF CORNER AND WITNESS MONUMENTS, references and accessories used to perpetuate the original or re-established location of this corner. Witnesses to monument location Bobby Sedgwick & Brad Digman & Shane Austin

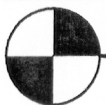
SKETCH:



LEGEND

- Number 8 x 30" rebar set with Grant County Aluminum cap
- Number 4 x 24" Rebar set with red plastic "TIE" cap
- x- Approximate existing fence

NOT TO SCALE



Austin Engineering LLC

4211 HWY 81 E, LANCASTER, WI 53813
PHONE 608-723-6363 FAX 608-723-6702

JOB NUMBER 05S292
FIELDBOOK: TDSR, 2509
G:\T5NR6W\34
H:\TIE\T4NR6W\18

DRAWN BY: SW AUSTIN
APPROVED: LL AUSTIN

18

AUG 2 8 2013