

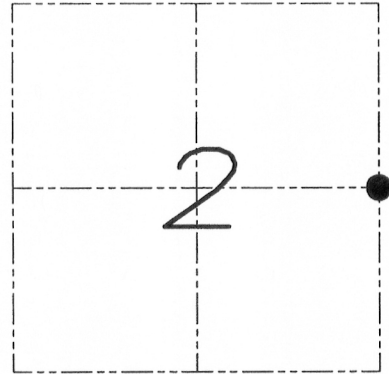
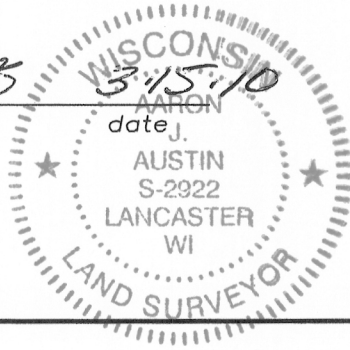
U.S. PUBLIC LAND SURVEY MONUMENT RECORD

Section 19, Town 4 North Range 6 West, Town of Glen Haven, Grant County, Wisconsin

CERTIFICATE

I, Larry L. Austin, do hereby certify that the corner location on this record was determined by me and/or under my direct supervision and that this U.S. public land survey monument record is correct and complete to the best of my knowledge and belief.

Larry L. Austin
Larry L. Austin, S-1903



● = CORNER LOCATION

HISTORY OF CORNER

Corner was originally set in 1832 by Robert Clark. No other record of the corner was found.

CORNER EVIDENCE FOUND

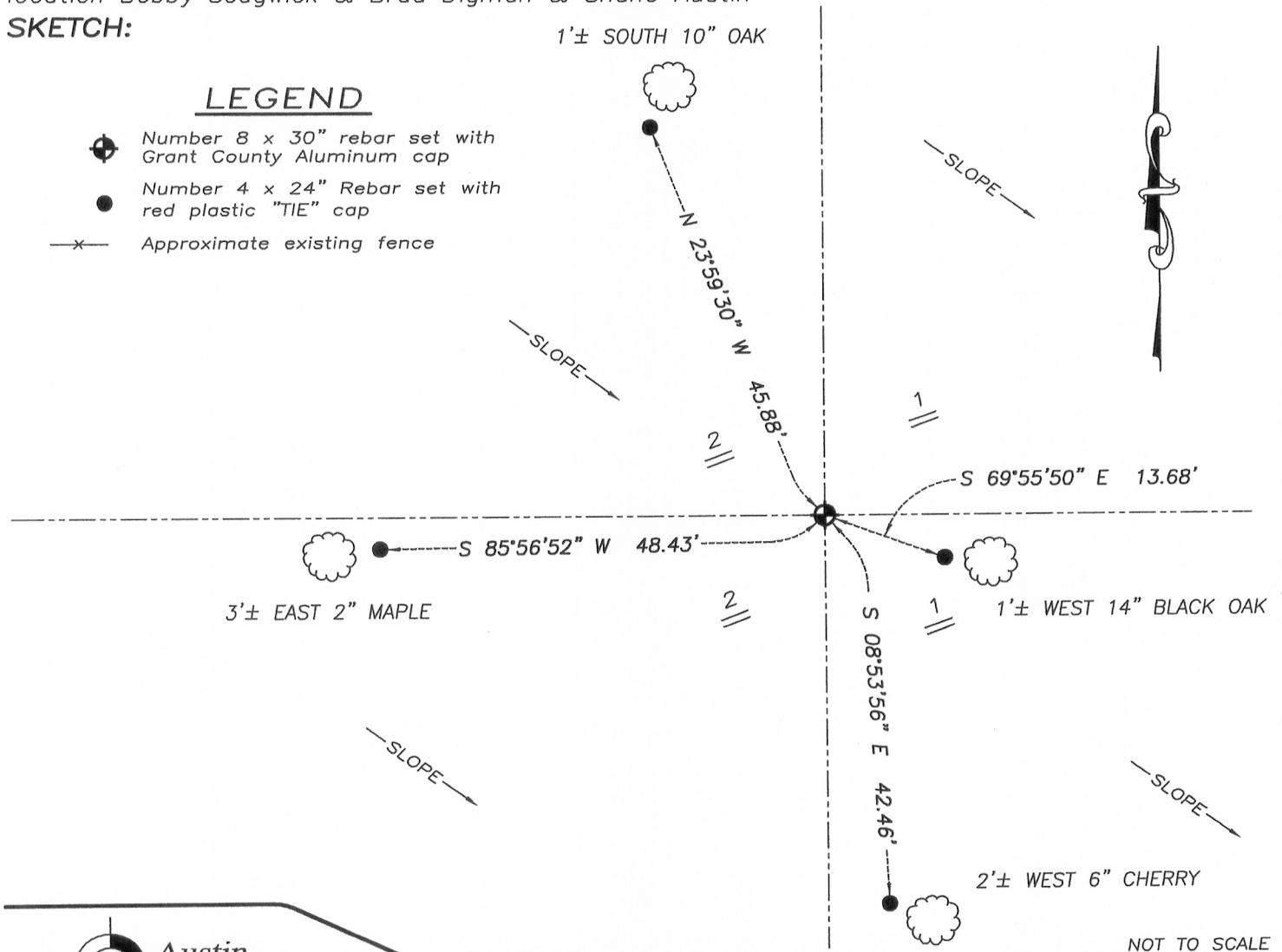
I reset the corner proportionally between the Northeast corner and the Southeast corner of Section 2 and verified this location by E.D.M. and G.P.S. methods.

DESCRIPTION OF CORNER AND WITNESS MONUMENTS, references and accessories used to perpetuate the original or re-established location of this corner. Witnesses to monument location Bobby Sedgwick & Brad Digman & Shane Austin

SKETCH:

LEGEND

- Number 8 x 30" rebar set with Grant County Aluminum cap
- Number 4 x 24" Rebar set with red plastic "TIE" cap
- x- Approximate existing fence



NOT TO SCALE

Austin Engineering LLC
austinengineeringllc.com
4211 HWY 81 E, LANCASTER, WI 53813
PHONE: 608-723-6363 FAX: 608-723-6702

JOB NUMBER 10S039-MISSMTN
FIELDBOOK: TDSR, 10-00
G:\T5NR6W\34
H:\TIE\T4NR6W\19
DRAWN BY: SW AUSTIN
APPROVED: LL AUSTIN

19

OCT 18 2013