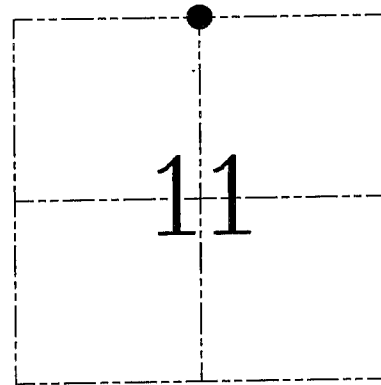
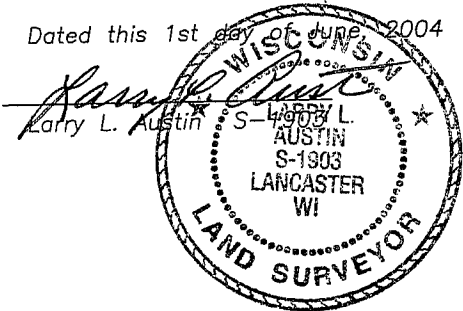


U.S. PUBLIC LAND SURVEY MONUMENT RECORD – GRANT COUNTY, WI
Section 11, Town 4 North Range 6 West, Town of Glen Haven

CERTIFICATE

I, Larry L. Austin, do hereby certify that the corner location on this record was determined by me and/or under my direct supervision and that this U.S. public land survey monument record is correct and complete to the best of my knowledge and belief.

Dated this 1st day of June, 2004



● = CORNER LOCATION

HISTORY OF CORNER ESTABLISHMENT

Corner was originally set in 1832 by Clark. In 1854 John Clark also tied to the corner. No other record of the corner was found.

DESCRIPTION OF CORNER EVIDENCE FOUND

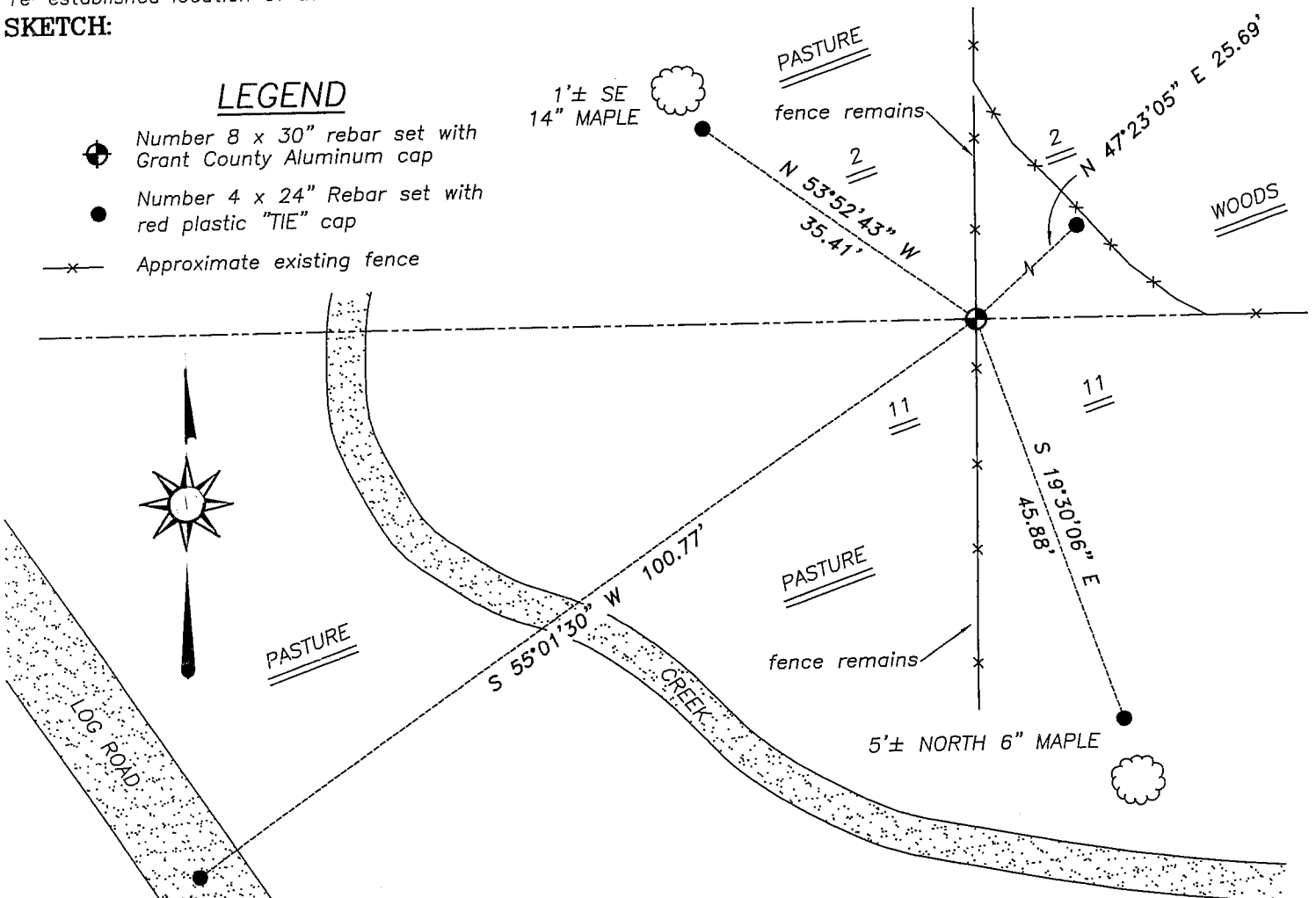
I reset the corner at projection of the existing fence East and North. Verified this location using EDM & GPS methods.

DESCRIPTION OF CORNER AND WITNESS MONUMENTS, references and accessories used to perpetuate the original or re-established location of this corner. Witnesses to corner location Bobby Sedgwick & Shane Austin & Brad Hazen

SKETCH:

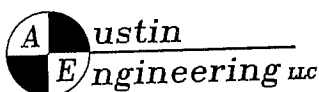
LEGEND

- Number 8 x 30" rebar set with Grant County Aluminum cap
- Number 4 x 24" Rebar set with red plastic "TIE" cap
- x— Approximate existing fence



* SEE SECTION SUMMARY FOR *
 * RELATIONSHIP TO AREA CORNERS *

SKETCH NOT TO SCALE



4211 HWY 81 E, LANCASTER, WI 53813
 PHONE 608-723-6363 FAX 608-723-6702

JOB NUMBER 04S092
 FIELDBOOK: TSDR, 2113B, 2329
 G:\T4NR6W\10
 H:\TIE\T4NR6W\24

DRAWN BY: SW AUSTIN
 APPROVED: LL AUSTIN