

U.S. PUBLIC LAND SURVEY MONUMENT RECORD - GRANT COUNTY, WI

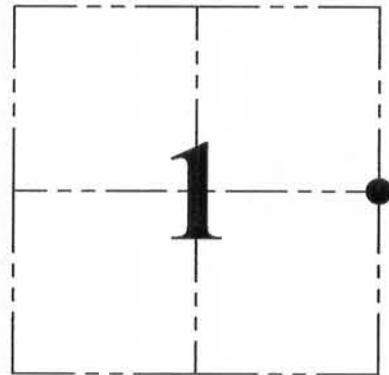
Section 1, Town 4 North Range 6 West, Town of Bloomington

CERTIFICATE:

I, Aaron J. Austin, Professional Wisconsin Land Surveyor, do hereby certify that the corner location on this record was determined by me and/or under my direct supervision and that this U.S. Public Land Survey Monument Record is correct and complete to the best of my knowledge and belief.

Dated this 2nd day of October, 2014.

Aaron J. Austin
 Aaron J. Austin, S-2922



● = CORNER LOCATION

HISTORY OF CORNER ESTABLISHMENT:

1832 Sibley set original corner.

1875 Barber set a stake at this corner on a Survey filed in Book B, Page 549.

1999 Larry Austin reset the corner in conjunction with a Survey filed in Book 6, Page 28.

1999 Larry Austin filed a Grant County Certified Land Corner sheet for this corner.

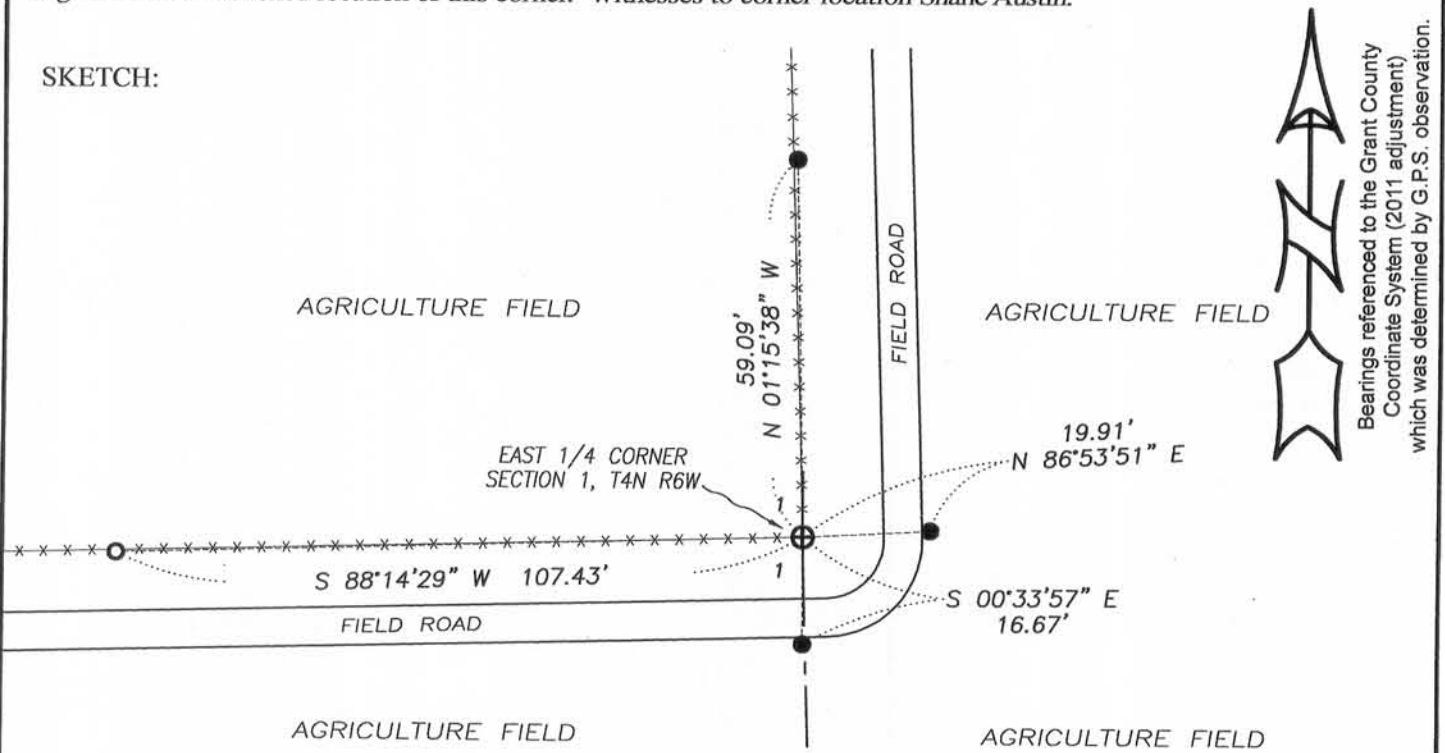
2008 Larry Austin measured to this corner on a Survey filed in Book 22, Page 91.

DESCRIPTION OF CORNER EVIDENCE FOUND:

I found and accepted a No. 8 rebar with Grant County Aluminum Cap after measurements to other corners in the area. I was only able to recover 1 original tie set from Larry Austin. I set 3 new ties as shown hereon. This corner was verified by E.D.M. and G.P.S. methods.

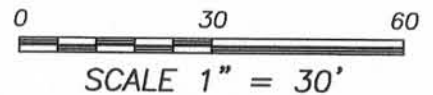
DESCRIPTION OF CORNER AND WITNESS MONUMENTS, references and accessories used to perpetuate the original or re-established location of this corner. Witnesses to corner location Shane Austin.

SKETCH:



LEGEND

- ⊕ No. 8 rebar found with Grant County Aluminum Cap
- Number 4 x 12" Rebar set with red plastic "TIE" cap
- Number 4 Rebar found with red plastic "TIE" cap
- *- Approximate existing fence



4211 HWY 81 E, LANCASTER, WI 53813
 PHONE: 608-723-6363 FAX: 608-723-6702

JOB NO: 14s157
 H:CRD\14s157-NEISES
 H:TIE\T4NR6W\20A

FIELDBOOK: TDSR
 DRAWN BY: AJ AUSTIN
 CREW: SW AUSTIN

GRANT COUNTY CERTIFIED LAND CORNER

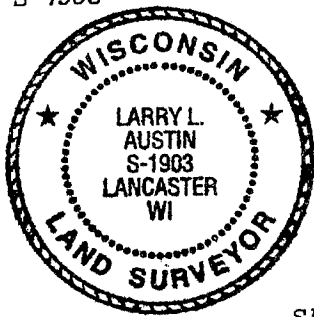
CORNER NUMBER 20

CERTIFICATE:

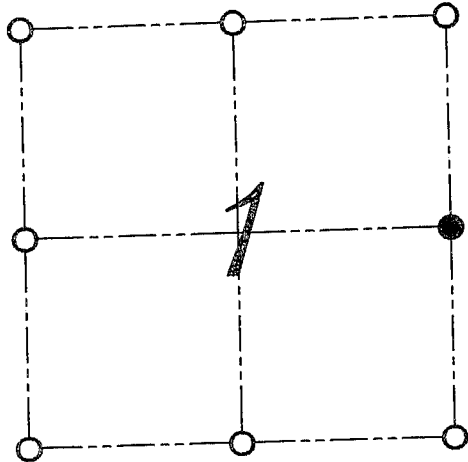
I, LARRY L. AUSTIN, DO HEREBY CERTIFY THAT ON EIGHTH DAY OF OCTOBER, 1999, I FOUND OCCUPATIONAL EVIDENCE OF THE EAST 1/4 CORNER SECTION 1, TOWN 4 NORTH, RANGE 6 WEST, OF THE FOURTH PRINCIPAL MERIDIAN, AND I RE-ESTABLISHED SAID CORNER ACCORDING TO THE WISCONSIN STATUTES AS SHOWN AND DESCRIBED HEREON.

DATED THIS FIFTEENTH DAY OF OCTOBER, 1999

Larry L. Austin
LARRY L. AUSTIN S-1903



SEAL



● = CORNER LOCATION

EAST 1/4 CORNER OF SECTION 1, T 4 N R 6 W TOWN OF BLOOMINGTON

HISTORY OF ORIGINAL CORNER ESTABLISHMENT:

CORNER WAS SET IN 1832 BY SIBLEY. IN 1875 JOEL BARBER SET A STAKE AT THIS LOCATION.

DESCRIPTION OF CORNER EVIDENCE FOUND:

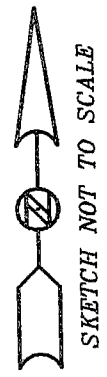
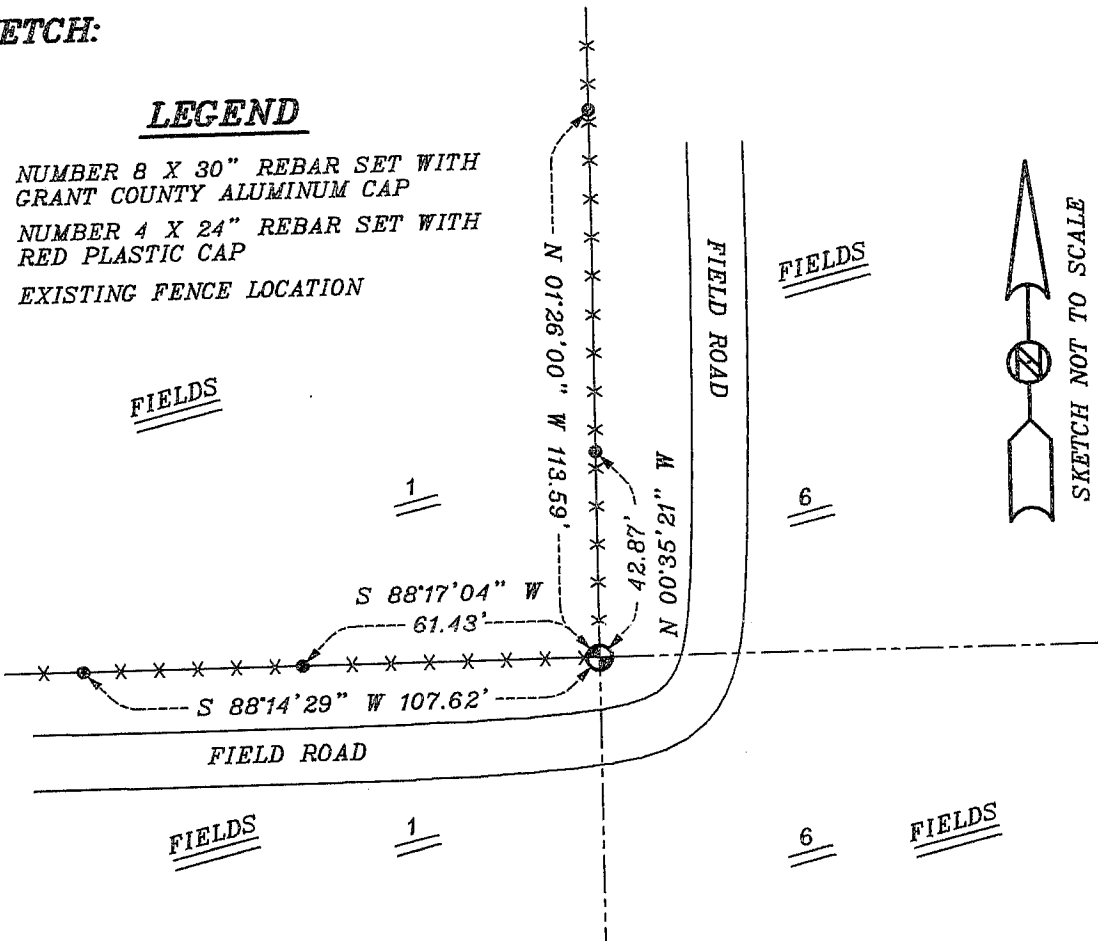
I FOUND AN OCCUPIED FENCE CORNER AND ACCEPTED IT'S LOCATION AFTER AN E.D.M. AND G.P.S. TRAVERSE OF THE AREA.

DESCRIPTION OF CORNER AND WITNESS MONUMENTS, REFERENCES AND ACCESSORIES USED TO PERPETUATE THE ORIGINAL OR RE-ESTABLISHED LOCATION OF THIS CORNER:
WITNESS TO THE CORNER LOCATION: BOBBY SEDGWICK ; SHELBY BLINDERT

SKETCH:

LEGEND

- NUMBER 8 X 30" REBAR SET WITH GRANT COUNTY ALUMINUM CAP
- NUMBER 4 X 24" REBAR SET WITH RED PLASTIC CAP
- * * * EXISTING FENCE LOCATION

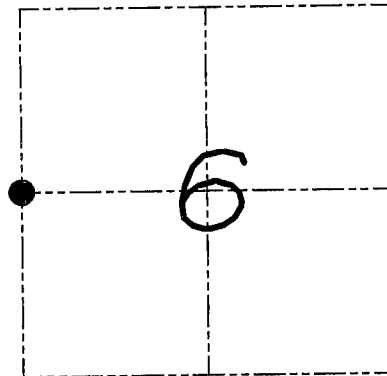


U.S. PUBLIC LAND SURVEY MONUMENT RECORD

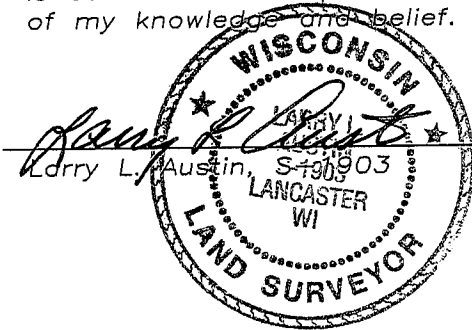
Section 6, Town 4 North Range 5 West, Township of
Glen Haven, Grant County, Wisconsin

CERTIFICATE

I, Larry L. Austin, do hereby certify that the corner location on this record was determined by me and/or under my direct supervision and that this U.S. public land survey monument record is correct and complete to the best of my knowledge and belief.



● = CORNER LOCATION



Larry L. Austin
Larry L. Austin, S 190903
LANCASTER WI
6.20.08
date

HISTORY OF CORNER

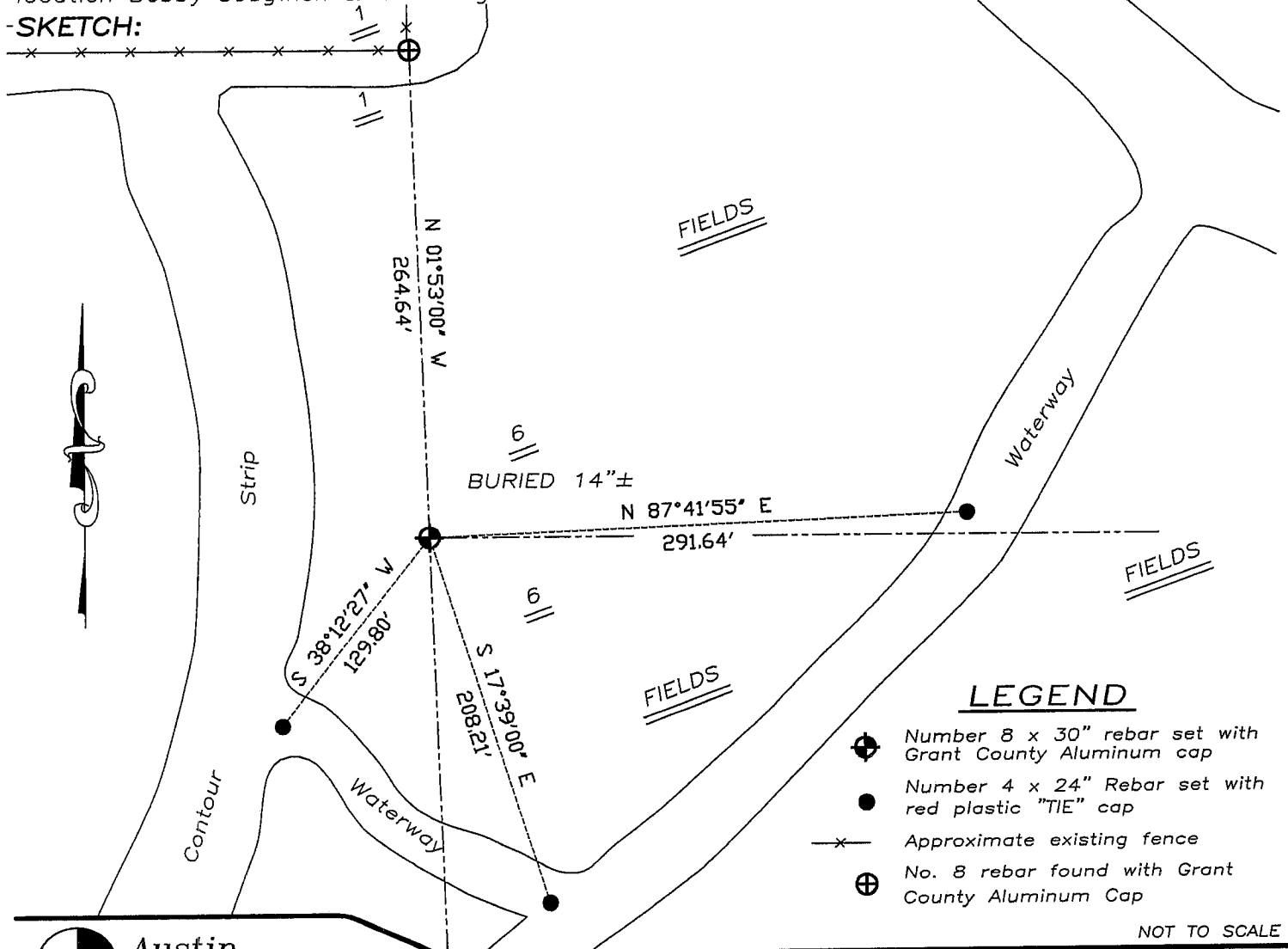
In 1855 Overton tied to the corner with no mention of monument. No recent record of the corner was found.

CORNER EVIDENCE FOUND

I reset the corner at the recorded offset from the existing East 1/4 of Section 1, T4N R6W. Verified this location using EDM & GPS methods.

DESCRIPTION OF CORNER AND WITNESS MONUMENTS, references and accessories used to perpetuate the original or re-established location of this corner. Witnesses to monument location Bobby Sedgwick & Brad Digman & Brad Hazen

-SKETCH:



NOT TO SCALE



Austin
Engineering LLC

4211 HWY 81 E, LANCASTER, WI 53813
PHONE 608-723-6363 FAX 608-723-6702

JOB NUMBER 08S061
FIELDBOOK: TDSR, 2711
G:\T4NR5W\06
H:\TIE\T4NR5W\14

DRAWN BY: BL STANFLEY
APPROVED: LL AUSTIN

14