

GRANT COUNTY CERTIFIED LAND CORNER

CORNER NUMBER 22

CERTIFICATE:

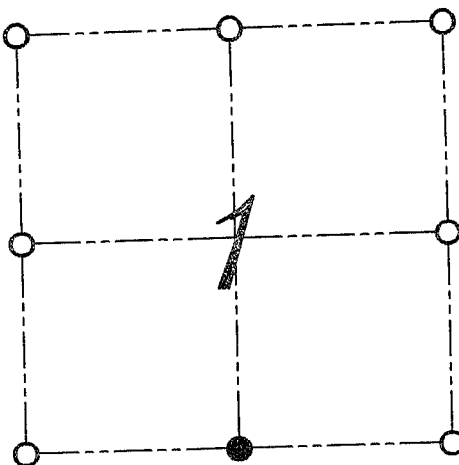
I, LARRY L. AUSTIN, DO HEREBY CERTIFY THAT ON EIGHTH DAY OF OCTOBER, 1999, I FOUND OCCUPATIONAL EVIDENCE OF THE SOUTH 1/4 CORNER SECTION 1, TOWN 4 NORTH, RANGE 6 WEST, OF THE FOURTH PRINCIPAL MERIDIAN, AND I RE-ESTABLISHED SAID CORNER ACCORDING TO THE WISCONSIN STATUTES AS SHOWN AND DESCRIBED HEREON.

DATED THIS FIFTEENTH DAY OF OCTOBER, 1999

Larry L. Austin
LARRY L. AUSTIN S-1903



SEAL



● = CORNER LOCATION
SOUTH 1/4 CORNER OF
SECTION 1, T 4 N R 6 W
TOWN OF BLOOMINGTON

HISTORY OF ORIGINAL CORNER ESTABLISHMENT:

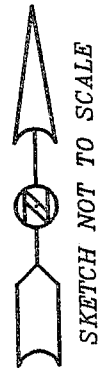
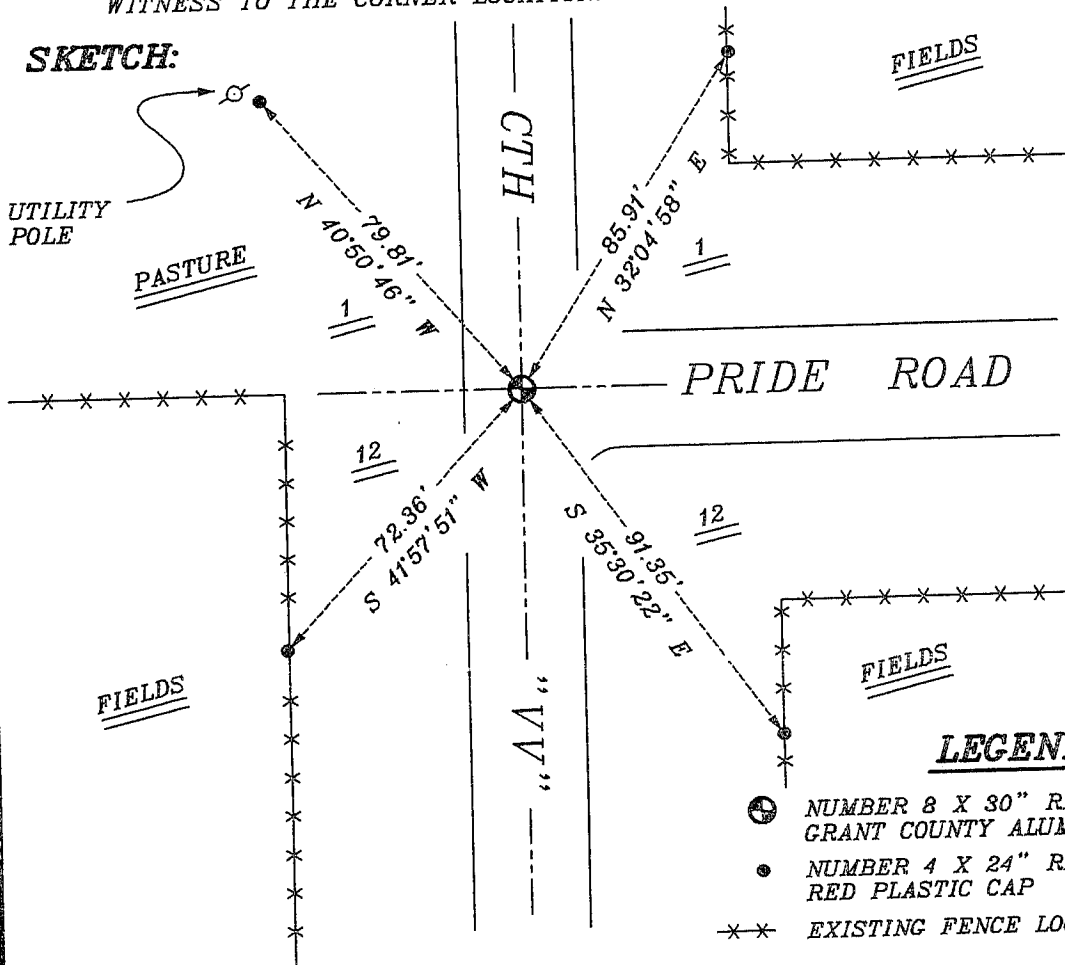
CORNER WAS SET IN 1832 BY ROBERT CLARK BARBER TIED TO THE CORNER IN 1875. ALSO SHOWN AS CORNER ON A HIGHWAY MAP FOR C.T.H. "VV".

DESCRIPTION OF CORNER EVIDENCE FOUND:

I FOUND A CENTERLINE OF ROAD NORTH-SOUTH AND A FENCE WEST. I ACCEPTED THIS LOCATION AFTER AN E.D.M. AND G.P.S. TRAVERSE OF THE AREA.

DESCRIPTION OF CORNER AND WITNESS MONUMENTS, REFERENCES AND ACCESSORIES USED TO PERPETUATE THE ORIGINAL OR RE-ESTABLISHED LOCATION OF THIS CORNER:
WITNESS TO THE CORNER LOCATION: BOBBY SEDGWICK ; SHELBY BLINDERT

SKETCH:



LEGEND

- NUMBER 8 X 30" REBAR SET WITH GRANT COUNTY ALUMINUM CAP
- NUMBER 4 X 24" REBAR SET WITH RED PLASTIC CAP
- ×× EXISTING FENCE LOCATION