

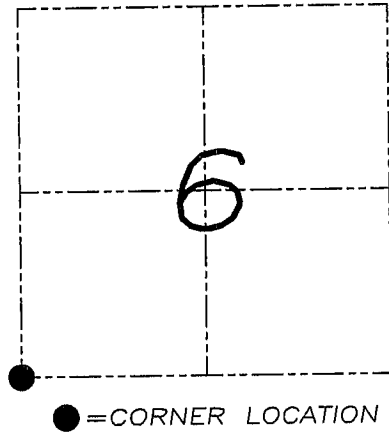
U.S. PUBLIC LAND SURVEY MONUMENT RECORD

Section 6, Town 4 North Range 5 West, Township of
Glen Haven, Grant County, Wisconsin

CERTIFICATE

I, Larry L. Austin, do hereby certify that the corner location on this record was determined by me and/or under my direct supervision and that this U.S. public land survey monument record is correct and complete to the best of my knowledge and belief.

Larry L. Austin
 Larry L. Austin, LASCAS903 WI
 LAND SURVEYOR
 6-20-08 date



HISTORY OF CORNER

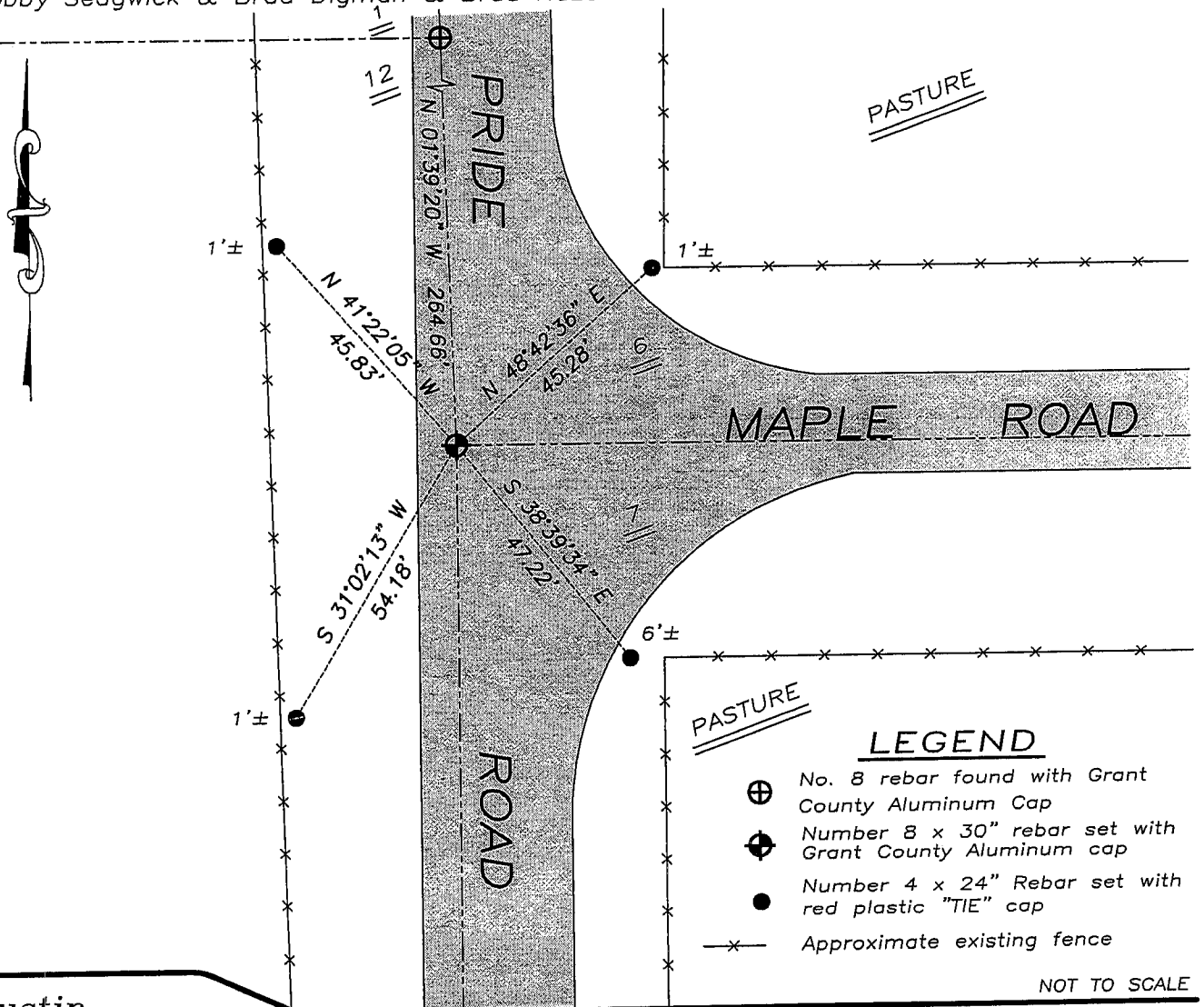
Corner was originally set in 1832 by Clark. In 1834 Clark tied to the corner. In 1855 Overton tied to the corner. No recent record of the corner was found.

CORNER EVIDENCE FOUND

I reset the corner at the recorded offset from the Southeast corner of Section 1, T4N R6W. Verified this location using EDM & GPS methods.

DESCRIPTION OF CORNER AND WITNESS MONUMENTS, references and accessories used to perpetuate the original or re-established location of this corner. Witnesses to monument location Bobby Sedgwick & Brad Digman & Brad Hazen

SKETCH:



Austin Engineering LLC

4211 HWY 81 E, LANCASTER, WI 53813
 PHONE 608-723-6363 FAX 608-723-6702

JOB NUMBER 08S061
 FIELDBOOK: TDSR, 2711
 G:\T4NR5W\06
 H:\TIE\T4NR5W\33

DRAWN BY: BL STANFLEY
 APPROVED: LL AUSTIN

GRANT COUNTY CERTIFIED LAND CORNER

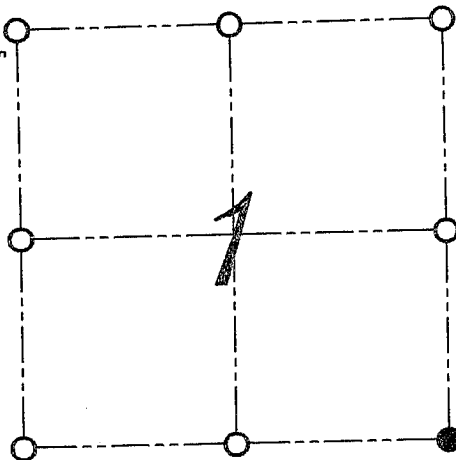
CORNER NUMBER 21

CERTIFICATE:

I, LARRY L. AUSTIN, DO HEREBY CERTIFY THAT ON EIGHTH DAY OF OCTOBER, 1999, I FOUND OCCUPATIONAL EVIDENCE OF THE SOUTHEAST CORNER SECTION 1, TOWN 4 NORTH, RANGE 6 WEST, OF THE FOURTH PRINCIPAL MERIDIAN, AND I RE-ESTABLISHED SAID CORNER ACCORDING TO THE WISCONSIN STATUTES AS SHOWN AND DESCRIBED HEREON.

DATED THIS FIFTEENTH DAY OF OCTOBER, 1999

Larry L. Austin
LARRY L. AUSTIN S-1903



● = CORNER LOCATION
SOUTHEAST CORNER OF SECTION 1, T 4 N R 6 W TOWN OF BLOOMINGTON



SEAL

HISTORY OF ORIGINAL CORNER ESTABLISHMENT:

CORNER WAS SET IN 1832 BY SIBLEY. IN 1875 JOEL BARBER TIED TO THE CORNER. NO EVIDENCE OF HIS LOCATION WAS FOUND.

DESCRIPTION OF CORNER EVIDENCE FOUND:

I FOUND THE PROJECTION OF THE CENTERLINES AS THE BEST EVIDENCE OF THE LOCATION OF THE CORNER. VERIFIED THIS LOCATION BY GOING ALL DIRECTIONS OF THE CORNER USING E.D.M. AND G.P.S. METHODS.

DESCRIPTION OF CORNER AND WITNESS MONUMENTS, REFERENCES AND ACCESSORIES USED TO PERPETUATE THE ORIGINAL OR RE-ESTABLISHED LOCATION OF THIS CORNER:
WITNESS TO THE CORNER LOCATION: BOBBY SEDGWICK ; SHELBY BLINDERT

SKETCH:

