

U.S. PUBLIC LAND SURVEY MONUMENT RECORD - GRANT COUNTY, WI

Section 36, Town 4 North Range 5 West, Town of Beetown

CERTIFICATE:

I, Aaron J. Austin, Wisconsin Professional Land Surveyor, do hereby certify that the corner location on this record was determined by me and/or under my direct supervision and that this U.S. Public Land Survey Monument Record is correct and complete to the best of my knowledge and belief.

Dated this 23rd day of December, 2015.

Aaron J. Austin
 Aaron J. Austin, S-2922



HISTORY OF CORNER ESTABLISHMENT:

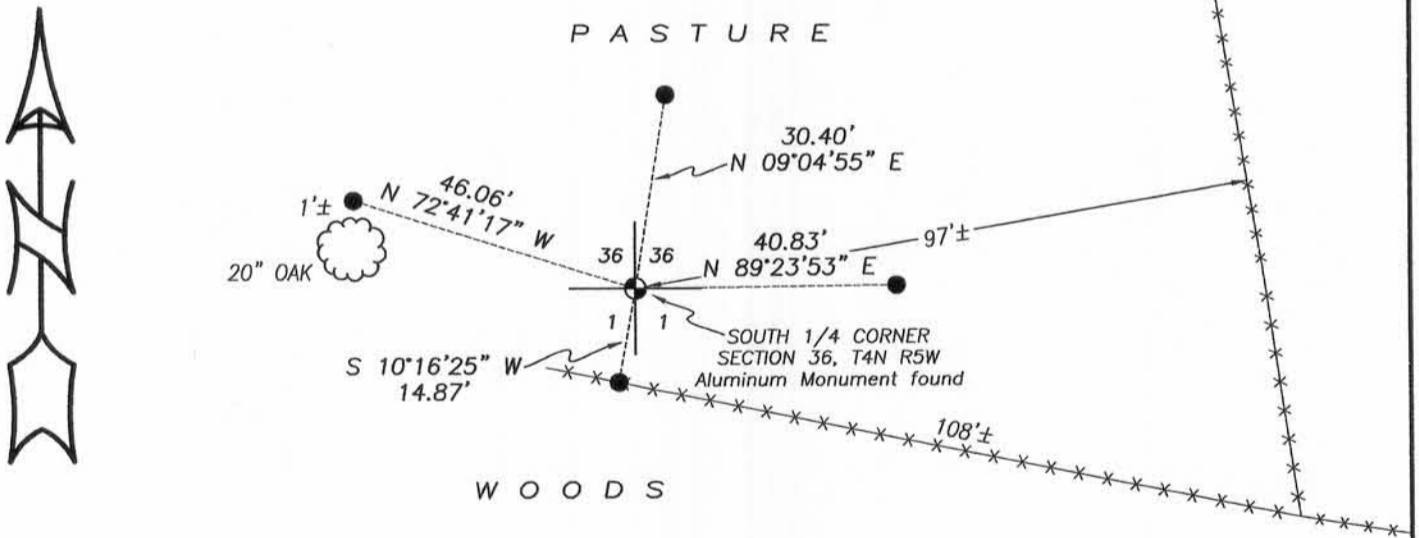
- 1832-Sibley set the original corner.
- 1844-Wiltse tied to the corner on a Survey filed in Book A, Page 212.
- 1908-Appleby tied to the corner on a Survey filed in Book D, Page 320.
- 1985-Dennis Snyder tied to the corner on Certified Survey Map No. 240.
- 1992-1993 F. Curtis Crook set an Aluminum Monument with a Wisconsin Dept. of Transportation Aluminum Cap.
- 1999-Peter Wood prepared a U.S. Land Survey Monument Record for the corner.
- 2012-Aaron Austin tied to the corner on a Survey filed in Book 31, Page 72.
- 2012-Aaron Austin tied to the corner on a Survey filed in Book 33, Page 17.

DESCRIPTION OF CORNER EVIDENCE FOUND:

I found the Aluminum Monument set by F. Curtis Crook. I set 4 new witness corners after I verified it's location with E.D.M. and G.P.S. methods.

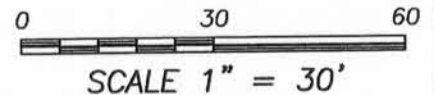
DESCRIPTION OF CORNER AND WITNESS MONUMENTS, references and accessories used to perpetuate the original or re-established location of this corner. Witnesses to corner location Shane Austin.

SKETCH:



LEGEND

- ⊙ Section Corner—as designated
- 1/2" x 12" Rebar set
- x-x- Existing fence



Austin Engineering LLC
 austinengineeringllc.com

4211 HWY 81 E, LANCASTER, WI 53813
 PHONE: 608-723-6363 FAX: 608-723-6702

JOB NO: 15s235
 H:CRD\15s235
 H:\TIE\T4NR5W\122

FIELDBOOK: TDSR
 DRAWN BY: AJ AUSTIN
 CREW: SW AUSTIN

U.S. PUBLIC LAND SURVEY MONUMENT RECORD

Wisconsin Department of Transportation

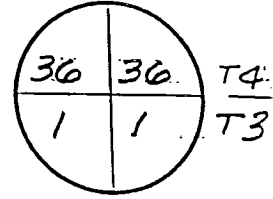
DT1291 96 (Replaces ED716)

T. 4 N. - R. 5 W

4th Principal Meridian

Corner _____

County Name GRANT		Name of Township / City / Village (Circle One) BEETOWN	
Surveyor Name PETER F. WOOD/STRAND ASSOC.			
Address, City, State, Zip Code 910 W. WINGRA DRIVE MADISON, WI 53715			
X (Easting) 1,724,514.20	Y (Northing) 282,387.80	Latitude	Longitude
Project ID 5215-02-21		Coordinate ID	



HORIZONTAL DATUM

- NAD 27
- NAD 83 (91)

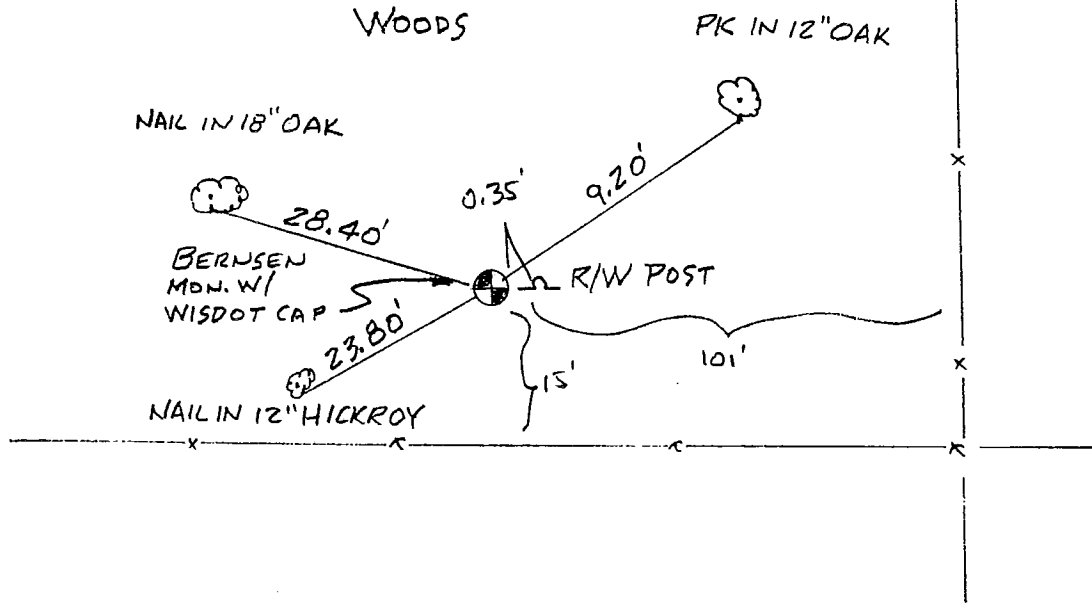
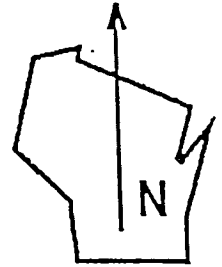
UNITS

- English
- Metric

COORDINATE SYSTEM

- Geodetic
- State Plane SOUTH Zone
- County _____

Location Diagram, showing corner identification name, bearing and distance references to at least four witness monuments, fence or occupational lines, centerlines of roads, and other site details for reference. Also, show the bearings and distances between the witness monuments.



Indicate fd. = found or pl. = placed in the diagram above

Bearings used in the location sketch and basis for monument location are assumed, unless as noted.

Monumentation Legend / Description of Corner and Witness Monuments:

765817.0
495655.37

If applicable, show any discrepancy between the location of the corner as restored or re-established and the location of that corner as previously restored or re-established by bearing and distance. Also, show the bearings and distances between the previous corner and at least two of the witness monuments.

Basis for Monument Location

1. Describe any record evidence, monument evidence, occupational evidence or any other material evidence including traverse measurements that you considered, and whether the monument was found or placed. Explain below, be specific, and attach a separate sheet if necessary.
2. Was the corner:
 - a) found perpetuated,
 - b) restored through acceptance of obliterated evidence,
 - c) relocated by witness testimony, or
 - d) accepted as a remonumented corner of record and maintained with additional monumentation?
3. Was the corner re-established through lost corner proportionate methods? If so, show the method, including the directions and distances to other public land survey corners used as evidence or used in determining the corner location.

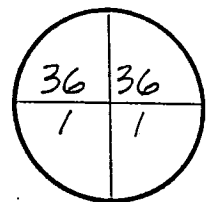
Please Type or Print

This corner's location was determined by F. Curtis Crook in the winter of 1992-1993 while engaged as a subconsultant for Strand Associates, Inc. This restoration work was done in conjunction with the R/W plat developed by Strand Associates, Inc. for Wisconsin DOT project I.D. 5215-02-21, STH 81 from CTH Y to STH 35. Ties were established by Strand Associates, Inc. to found monuments and/or coordinate positions set or determined by Mr. Crook. It is believed these monuments were set at the best available evidence of the corner location. Contact to Mr. Crook can be made at:

Box 68
Readstown, WI 54652

TEL: 608-629-5429

T. 4 N.-R. 5 W.
4th Principal Meridian
Corner _____

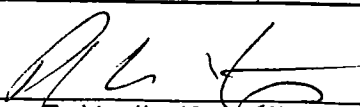


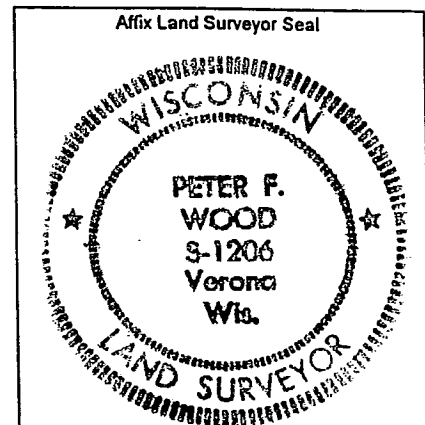
Certification I, PETER F. WOOD

(type or print name) certify that the corner location shown on this record was determined by me or under my direction and control and that this U.S. Public Land Survey Monument Record is correct and complete to the best of my knowledge and belief, in accordance with Chapter A-E 7.08 of the Wisconsin Administrative Code.

Section Control Data Sheets have been filed in the County Surveyor's office, showing final measurements by direction and distance between all remonumented corners. Section Control Information is referenced by the following:

Date	Project ID	Sheet(s)
11-30-99	5215-02-21	

X  S-1206 11-30-99
(Registered Land Surveyor Signature and Number) (Date)



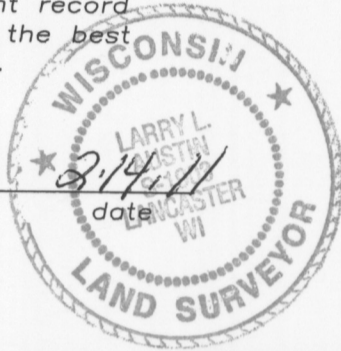
U.S. PUBLIC LAND SURVEY MONUMENT RECORD

Section 1, Town 3 North Range 5 West, Town of Cassville, Grant County, Wisconsin

CERTIFICATE

I, Larry L. Austin, do hereby certify that the corner location on this record was determined by me and/or under my direct supervision and that this U.S. public land survey monument record is correct and complete to the best of my knowledge and belief.

Larry L. Austin
Larry L. Austin, S-1903



● = CORNER LOCATION

HISTORY OF CORNER

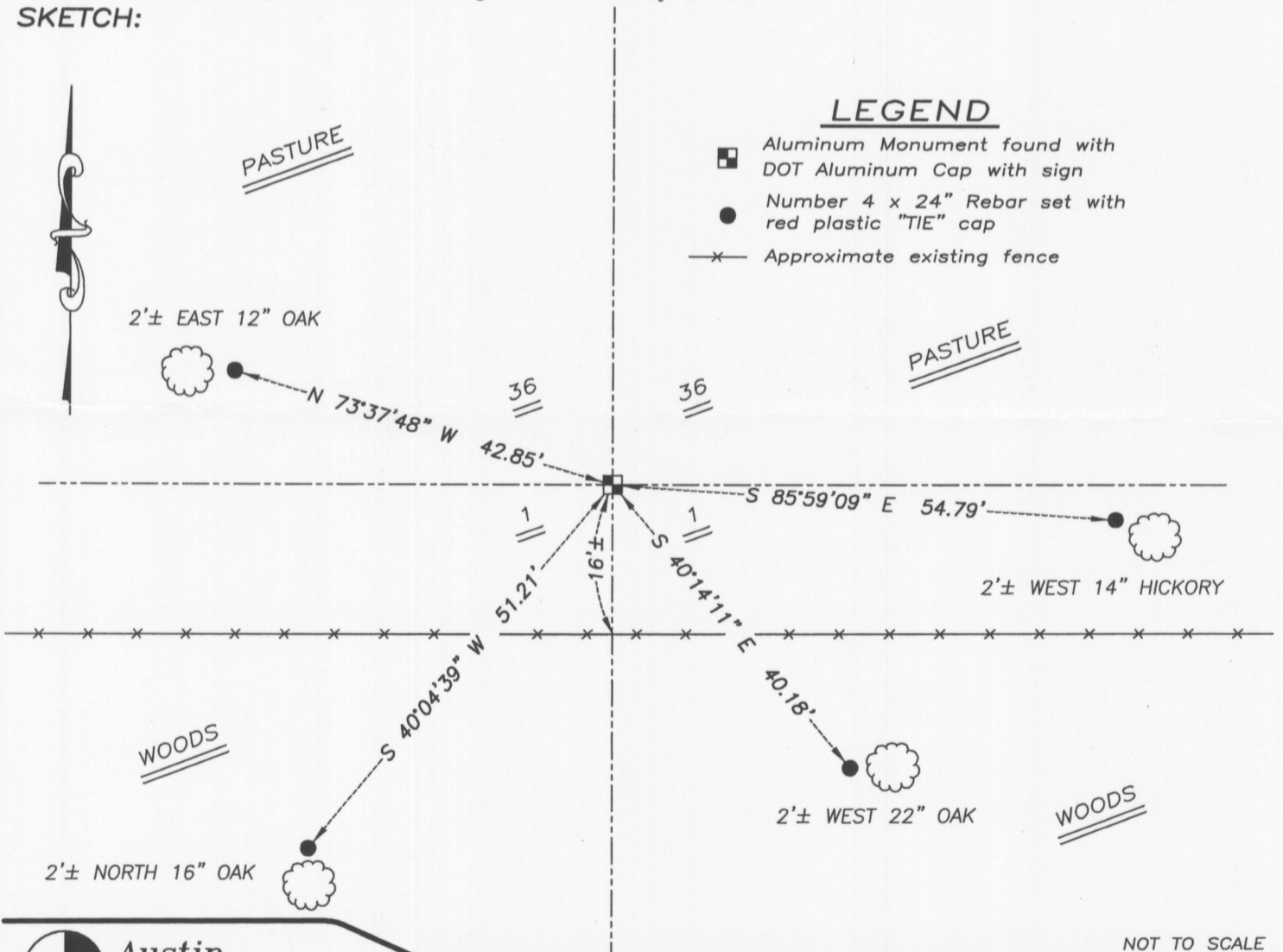
Corner was originally set in 1832 by Lyon. In 1908 Appleby tied to all of the corners of Section 1. In 1992 Crook set the corner while working for the Wisconsin Department of Transportation. No other record of the corner was found.

CORNER EVIDENCE FOUND

I found the DOT Aluminum monument and accepted it's location after an EDM & GPS traverse of the area.

DESCRIPTION OF CORNER AND WITNESS MONUMENTS, references and accessories used to perpetuate the original or reestablished location of this corner. Witnesses to monument location Bobby Sedgwick & Brad Digman & Shelby Blindert

SKETCH:



NOT TO SCALE



Austin Engineering LLC

4211 HWY 81 E, LANCASTER, WI 53813
PHONE 608-723-6363 FAX 608-723-6702

JOB NUMBER 09S015
FIELDBOOK: TDSR, 2710
G:\T4NR5W\34
H:\TIE\T3NR5W\02

DRAWN BY: SW AUSTIN
APPROVED: LL AUSTIN

02

FEB 18 2011