

# GRANT COUNTY CERTIFIED LAND CORNER

CORNER NUMBER 118

**CERTIFICATE:**

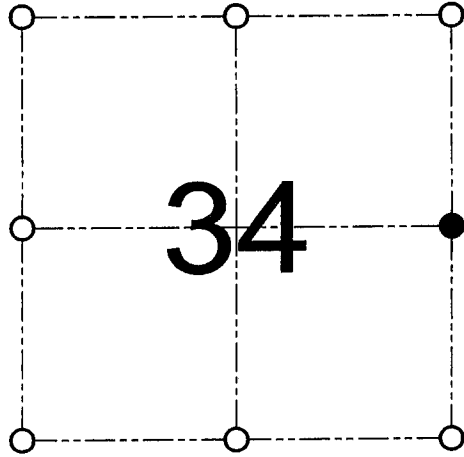
I, Larry L. Austin, do hereby certify that on the 20th day of July, 2000, I found no evidence of the East 1/4 corner of Section 34, Town 4 North, Range 5 West, of the 4th Principal Meridian, and I re-established said corner according to the Wisconsin statutes as shown and described hereon.

Dated this 29th day of December, 2000

*Larry L. Austin*  
Larry L. Austin S-1903



SEAL



● = CORNER LOCATION  
EAST 1/4 CORNER OF  
SECTION 34, T 4 N R 5 W  
TOWN OF BEETOWN

**HISTORY OF ORIGINAL CORNER ESTABLISHMENT:**

Corner was set in 1832 by Robert Clark.  
No other record of the corner was found.

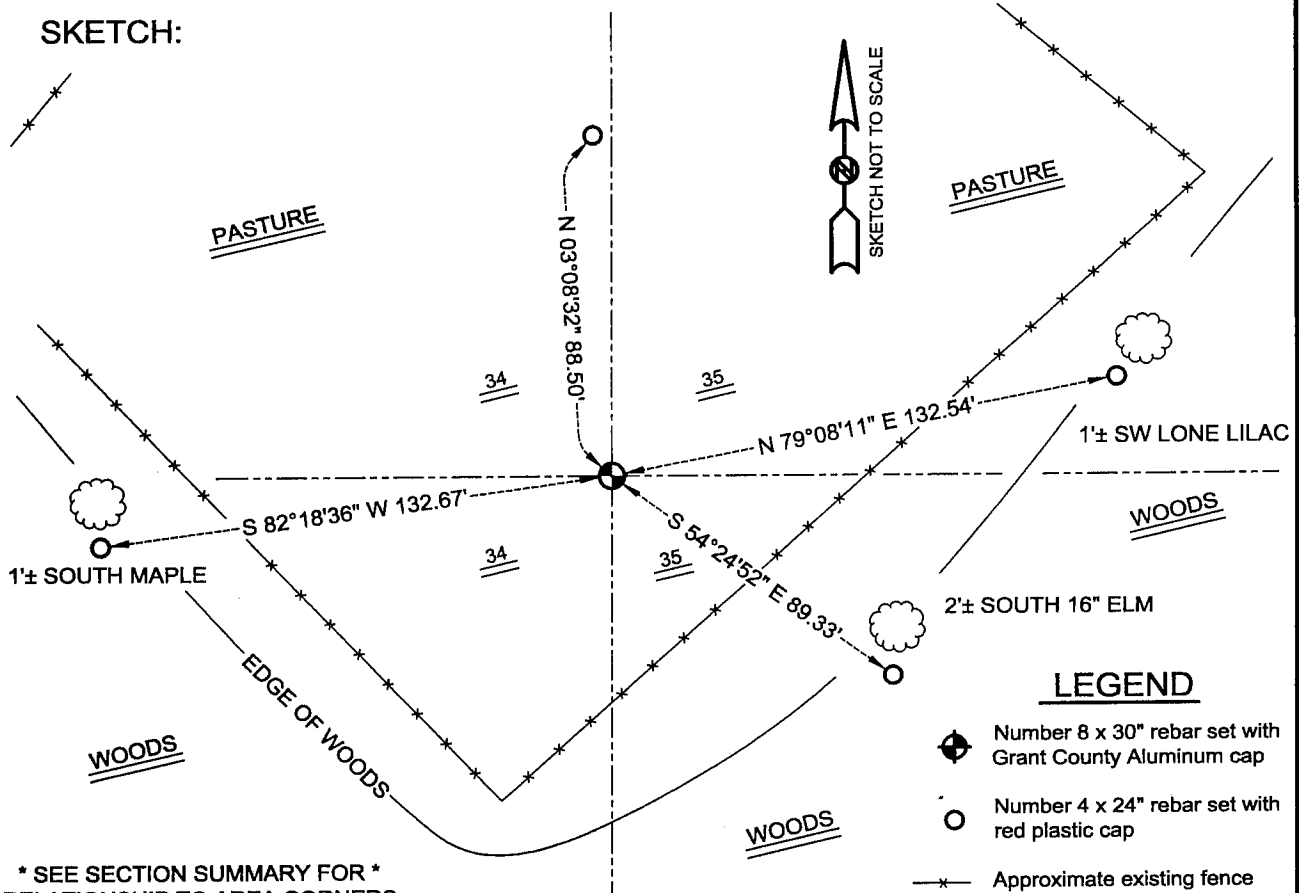
**DESCRIPTION OF CORNER EVIDENCE FOUND:**

I set the corner proportionately between the Northeast and Southeast corners of Section 34. Verified this location using EDM & GPS methods.

**DESCRIPTION OF CORNER AND WITNESS MONUMENTS, references and accessories used to perpetuate the original or re-established location of this corner**

WITNESS TO THE CORNER LOCATION: JERRY SPEILMAN & SHELBY BLINDERT & BOBBY SEDGWICK

**SKETCH:**



\* SEE SECTION SUMMARY FOR \*  
RELATIONSHIP TO AREA CORNERS

**AUSTIN ENGINEERING, LLC**  
4211 HWY 81 E, LANCASTER, WI 53813  
PHONE 608-723-6363 FAX 608-723-6702

FIELDBOOK: SDR33, 2028  
G:\T4NR5W\34  
C:\SC14\SWA\TIE\T4NR5W\118

DRAWN BY: SW AUSTIN  
APPROVED: LL AUSTIN  
CREW: BS - SB - SA - TF