

# GRANT COUNTY

## Survey Monument Record

TYPE OF MONUMENT 3/4" x 24" IRON BAR SET

STATE PLANE COORDINATES: N \_\_\_\_\_  
E \_\_\_\_\_

ELEVATION — M.S.L. DATUM: \_\_\_\_\_

THETA ANGLE: \_\_\_\_\_

FIELD BOOK: 96-01

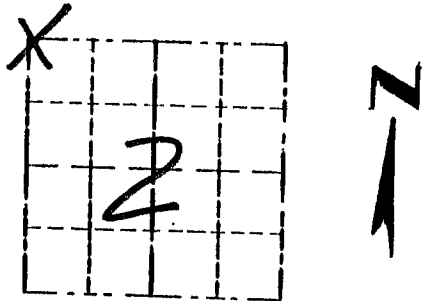
PAGE \_\_\_\_\_

CORNER NO. 05

SECTION 02

TOWN 3N

RANGE 5W

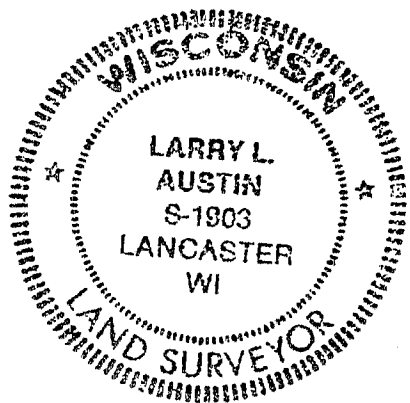


LOCATION  
(Indicated by "X")

### BASIS FOR MONUMENT LOCATION

(Use reverse side if necessary)

CORNER SET IN 1832 BY  
LUCIUS LYON. IN 1854  
JOHN CLARK SURVEY THE SEAL:  
CORNER AND TIED TO TWO  
BEARING TREES, BOTH OF WHICH  
WERE UNRECOVERABLE. I FOUND  
A NAIL AT BASE OF FENCE  
CORNER AND ACCEPTED IT  
AFTER EDM TRAVERSE OF  
AREA.



CERTIFIED CORRECT

*Larry L. Austin*  
Registered Land Surveyor

DATE: 12/30/96

### TIE SKETCH

Show at least three (3) ties and monument

#### LEGEND

⊕ 3/4" x 24" IRON  
BAR SET

○ 1/2" x 18" IRON BAR SET

—\*—\*—\* EXISTING FENCE 58.09'

