

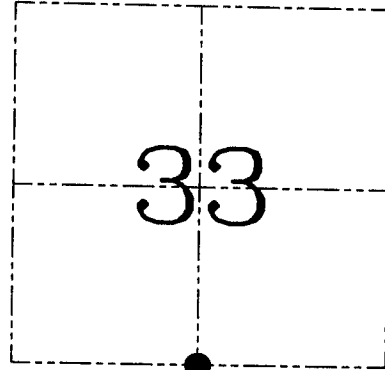
**U.S. PUBLIC LAND SURVEY MONUMENT RECORD – GRANT COUNTY, WI**  
**Section 33, Town 4 North, Range 5 West, Town of Glen Haven**

**CERTIFICATE**

I, Larry L. Austin, do hereby certify that the corner location on this record was determined by me and/or under my direct supervision and that this U.S. public land survey monument record is correct and complete to the best of my knowledge and belief.

Dated this 16th day of May, 2002

*Larry L. Austin*  
 Larry L. Austin S-1903



● = CORNER LOCATION

**HISTORY OF CORNER ESTABLISHMENT**

Corner was originally set in 1832 by Sibley. In 1850 Everett tied to the original corner with no mention of other monuments.

**DESCRIPTION OF CORNER EVIDENCE FOUND**

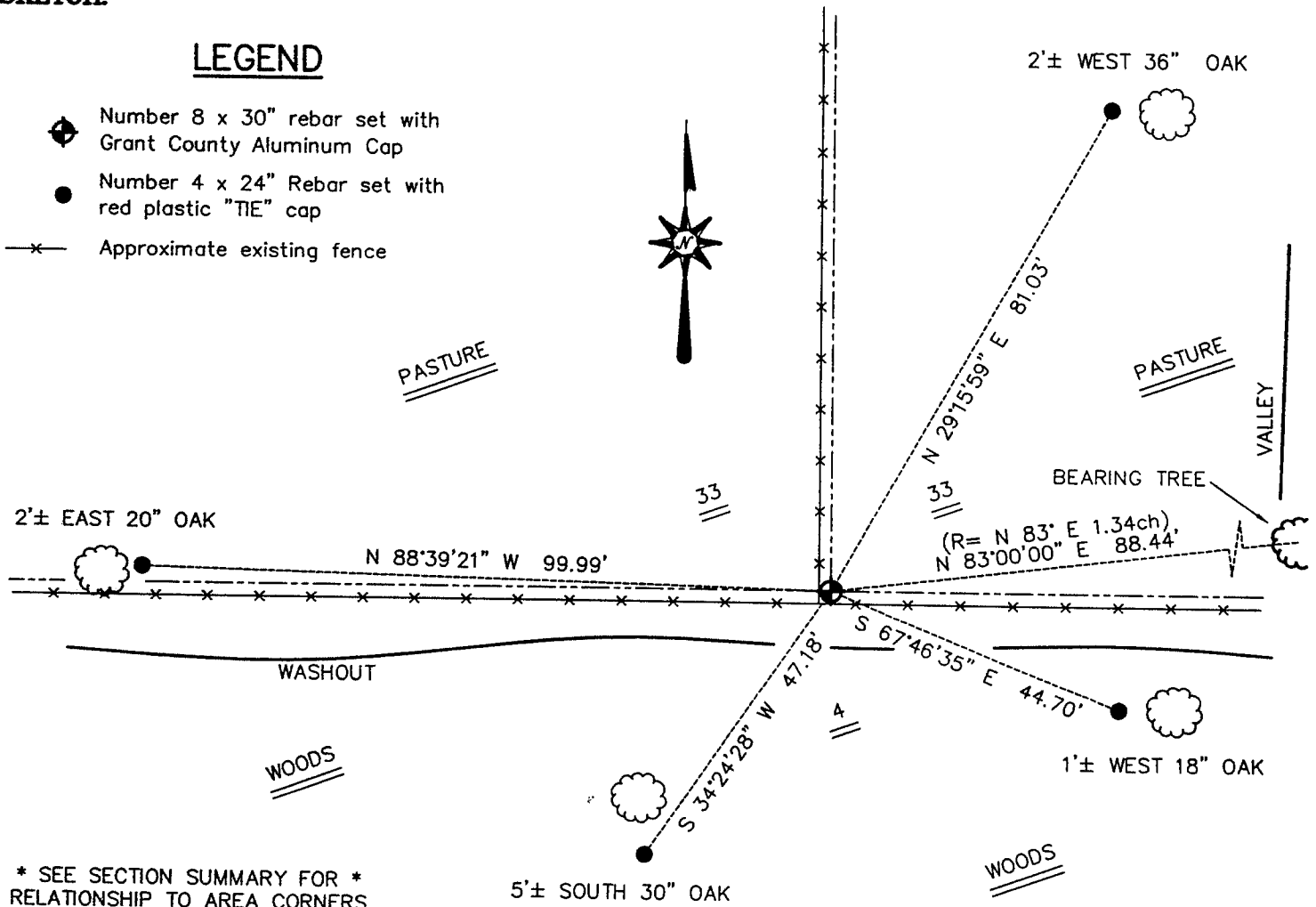
I found the original bearing tree to the East of the corner. I reset the corner based on the bearing tree. Verified this location using EDM & GPS methods.

**DESCRIPTION OF CORNER AND WITNESS MONUMENTS**, references and accessories used to perpetuate the original or re-established location of this corner. Witnesses to the corner location B. Sedgwick & S. Austin & B. Digman

**SKETCH:**

**LEGEND**

- ◆ Number 8 x 30" rebar set with Grant County Aluminum Cap
- Number 4 x 24" Rebar set with red plastic "TIE" cap
- x— Approximate existing fence



\* SEE SECTION SUMMARY FOR \*  
 RELATIONSHIP TO AREA CORNERS

SKETCH NOT TO SCALE

**AUSTIN ENGINEERING, LLC**  
 4211 HWY 81 EAST, LANCASTER, WI 53813  
 PHONE 608-723-6363 FAX 608-723-6702

FIELDBOOK: SDR33, 2120A  
 G: \T4NR5W\21  
 C: \SWA\TIE\T4NR5W\128  
 CREW: BS-SB-SA-BD

DRAWN BY: SW AUSTIN  
 APPROVED: LL AUSTIN

**CORNER NUMBER 128**