

# U.S. PUBLIC LAND SURVEY MONUMENT RECORD

Section 4, Town 3 North Range 5 West, Town of Cassville, Grant County, Wisconsin

## CERTIFICATE

I, Larry L. Austin, do hereby certify that the corner location on this record was determined by me and/or under my direct supervision and that this U.S. public land survey monument record is correct and complete to the best of my knowledge and belief.

*Larry L. Austin*  
 Larry L. Austin, S-1903



● = CORNER LOCATION

## HISTORY OF CORNER

Corner was originally set in 1832 by Lyon.  
 No other record of the corner was found.

## CORNER EVIDENCE FOUND

I set the corner at a protraction of the North line of the NW 1/4 of the NE 1/4 for Northing. Easting was established using the existing North-South fence. Verified this location East-West and South using EDM & GPS methods.

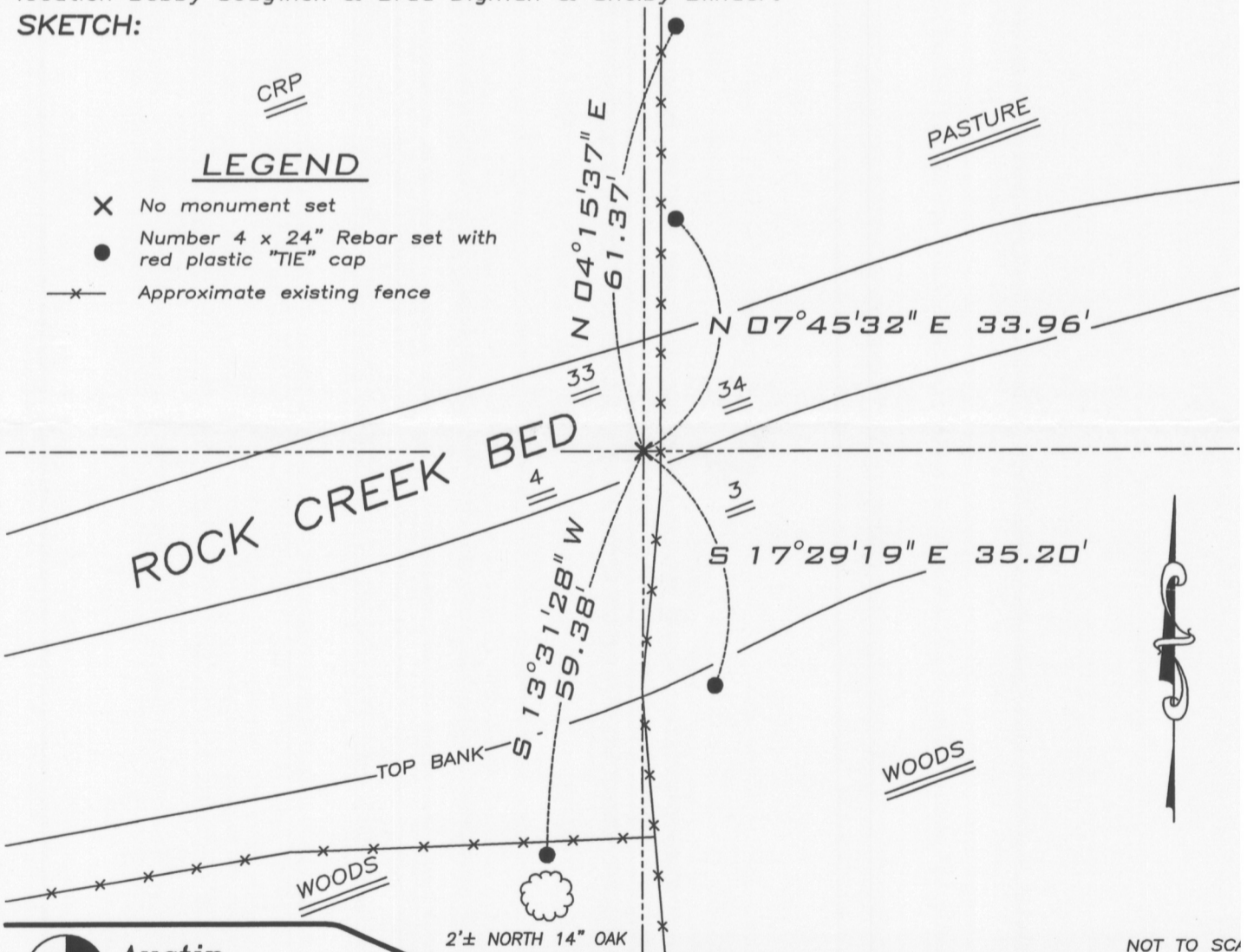
DESCRIPTION OF CORNER AND WITNESS MONUMENTS, references and accessories used to perpetuate the original or re-established location of this corner. Witnesses to monument location Bobby Sedgwick & Brad Digman & Shelby Blindert

## SKETCH:

CRP

### LEGEND

- X No monument set
- Number 4 x 24" Rebar set with red plastic "TIE" cap
- x- Approximate existing fence



NOT TO SCALE



**Austin Engineering LLC**

4211 HWY 81 E, LANCASTER, WI 53813  
 PHONE 608-723-6363 FAX 608-723-6702

JOB NUMBER 08S207  
 FIELDBOOK: TDSR, 2707  
 G:\T4NR5W\21  
 H:\TIE\T3NR5W\07

DRAWN BY: SW AUSTIN  
 APPROVED: LL AUSTIN

0

FEB 18 2011