

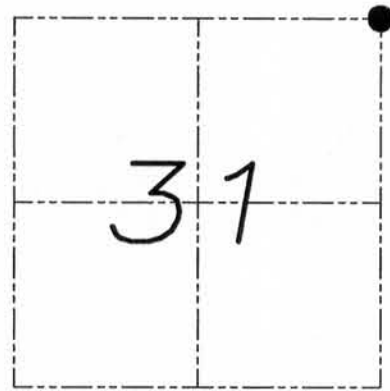
U.S. PUBLIC LAND SURVEY MONUMENT RECORD

Section 31, Town 4 North Range 5 West, Town of Glen Haven, Grant County, Wisconsin

CERTIFICATE

I, Larry L. Austin, do hereby certify that the corner location on this record was determined by me and/or under my direct supervision and that this U.S. public land survey monument record is correct and complete to the best of my knowledge and belief.

Larry L. Austin
 Larry L. Austin, S-1903



● = CORNER LOCATION

HISTORY OF CORNER

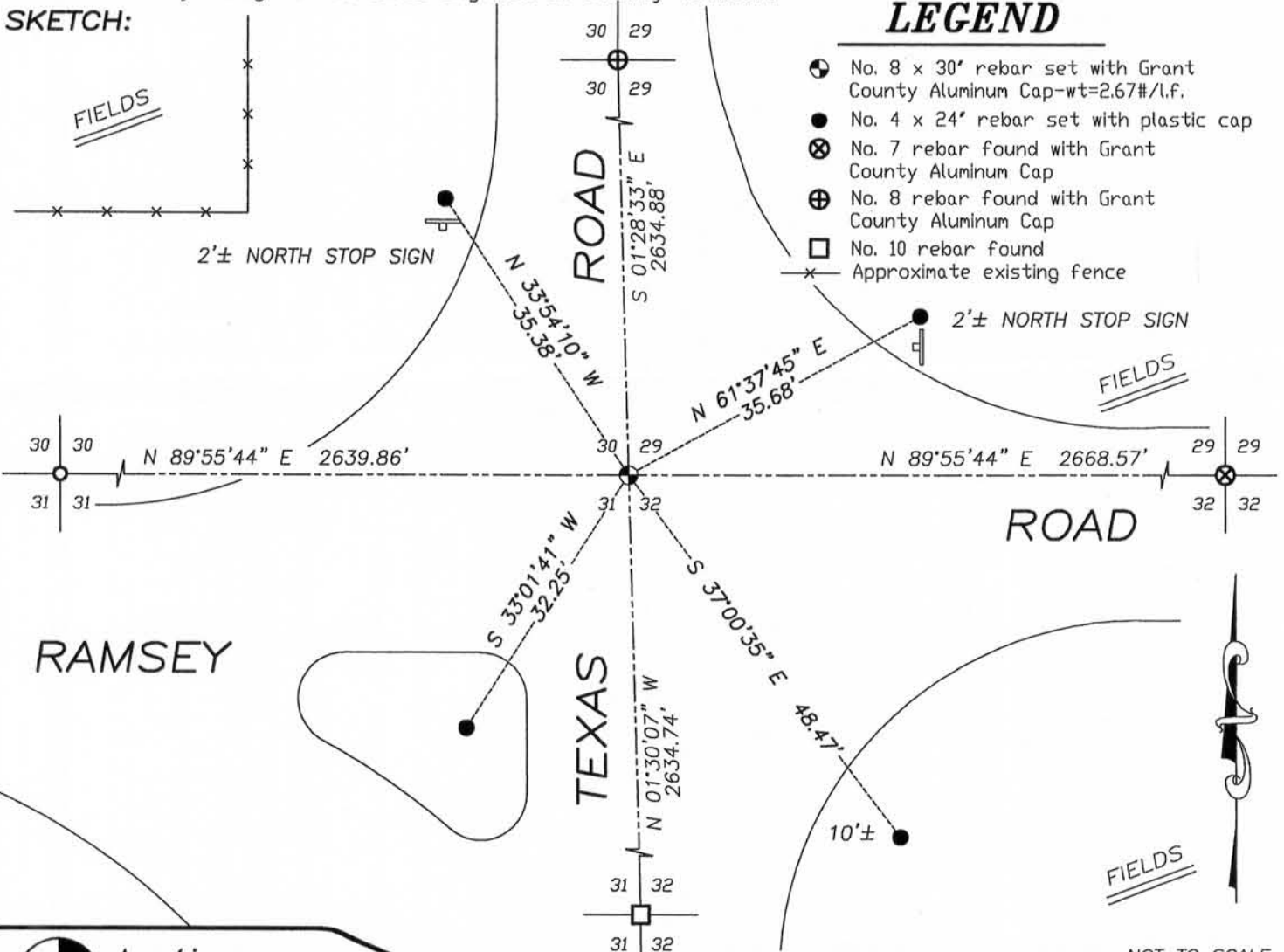
Corner was originally set in 1832 by Robert Clark. In 1849 Stuntz tied to the corner with no mention of the monument. No other record of the corner was found.

CORNER EVIDENCE FOUND

Only evidence found of the corner was the centerline of township roads. I reset the corner proportionally between all existing corners East, West North and South of this corner. I verified its location using E.D.M. and G.P.S. methods.

DESCRIPTION OF CORNER AND WITNESS MONUMENTS, references and accessories used to perpetuate the original or re-established location of this corner. Witnesses to monument location Bobby Sedgwick & Brad Digman & Shelby Blindert

SKETCH:



Austin Engineering LLC

4211 HWY 81 E, LANCASTER, WI 53813
 PHONE 608-723-6363 FAX 608-723-6702

JOB NUMBER 085148-BREUER
 FIELDBOOK: TDSR, 2812
 G:\T4NR5W\30
 H:\TIE\T4NR5W\111

DRAWN BY: SW AUSTIN
 APPROVED: LL AUSTIN

111

NOV 04 2011