

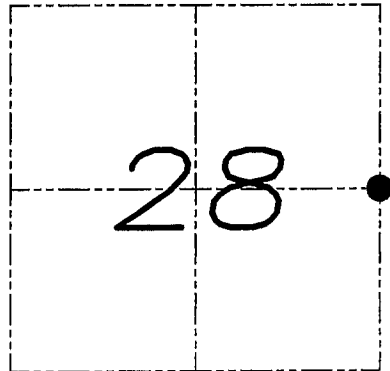
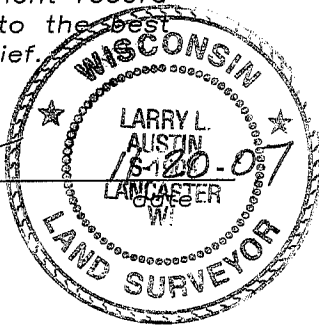
# U.S. PUBLIC LAND SURVEY MONUMENT RECORD

Section 28, Town 4 North Range 5 West, Town of  
Glen Haven, Grant County, Wisconsin

## CERTIFICATE

I, Larry L. Austin, do hereby certify that the corner location on this record was determined by me and/or under my direct supervision and that this U.S. public land survey monument record is correct and complete to the best of my knowledge and belief.

*Larry L. Austin*  
Larry L. Austin, S-1903



● = CORNER LOCATION

## HISTORY OF CORNER

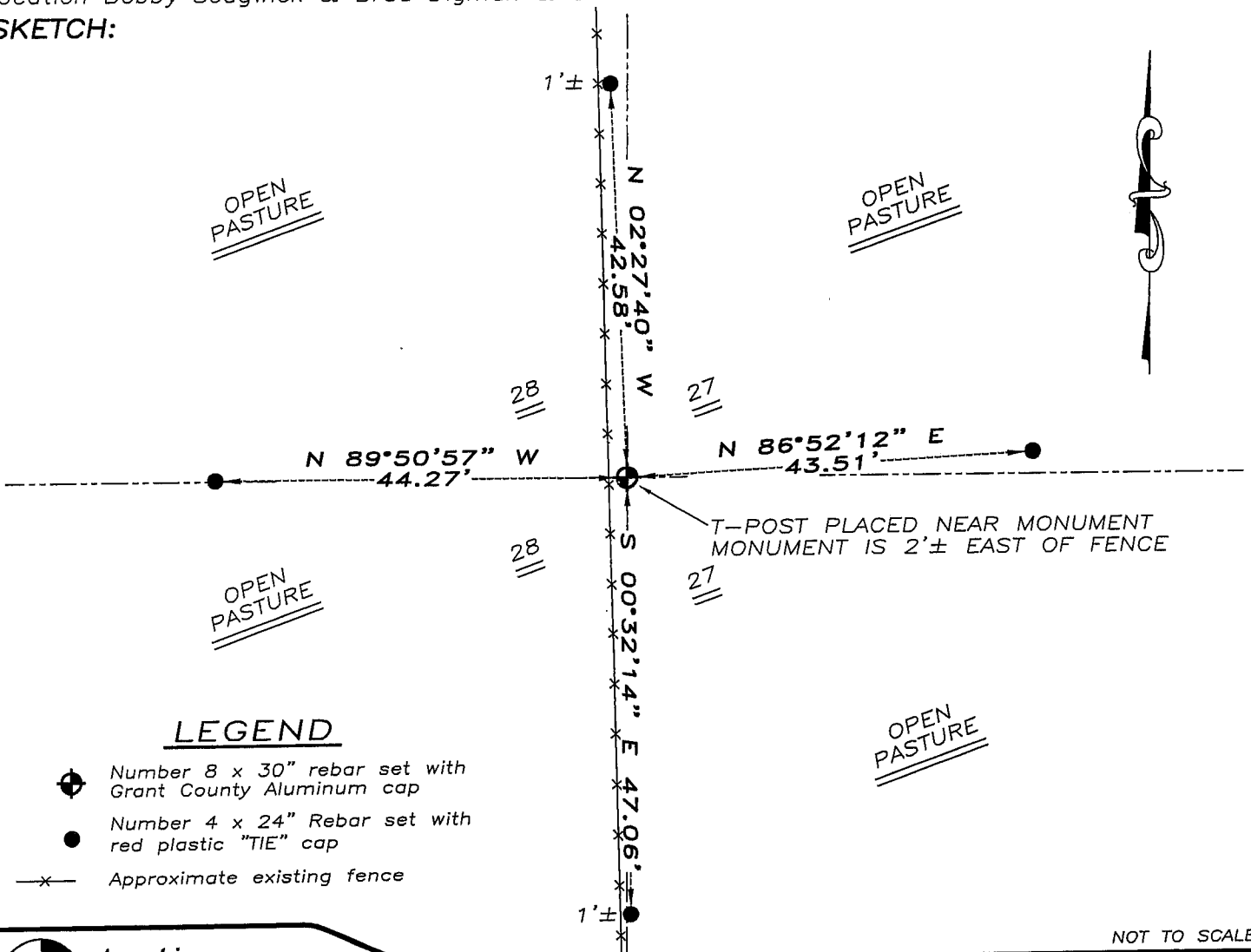
Corner was originally set in 1832 by Clark. In 1844 Wiltse tied to the original corner. In 1848 Stuntz tied to the original corner. In 1853 Everett tied to the corner. No other record of the corner was found.

## CORNER EVIDENCE FOUND

No evidence of the original corner was found. I set the monument proportionately and on-line between the Northeast and Southeast corners of Section 28. This location fit occupational evidence well. Verified this location using EDM & GPS methods.

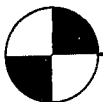
DESCRIPTION OF CORNER AND WITNESS MONUMENTS, references and accessories used to perpetuate the original or re-established location of this corner. Witnesses to monument location Bobby Sedgwick & Brad Digman & Shane Austin

## SKETCH:



## LEGEND

- Number 8 x 30" rebar set with Grant County Aluminum cap
- Number 4 x 24" Rebar set with red plastic "TIE" cap
- x- Approximate existing fence



**Austin**  
**Engineering LLC**

4211 HWY 81 E, LANCASTER, WI 53813  
PHONE 608-723-6363 FAX 608-723-6702

JOB NUMBER 07S283  
FIELDBOOK: TDSR, 2707  
G:\T4NR5W\21  
H:\TIE\T4NR5W\97

DRAWN BY: SW AUSTIN  
APPROVED: LL AUSTIN

NOT TO SCALE