

GRANT COUNTY CERTIFIED LAND CORNER

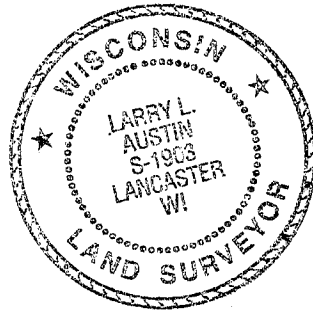
CORNER NO. 90

CERTIFICATE:

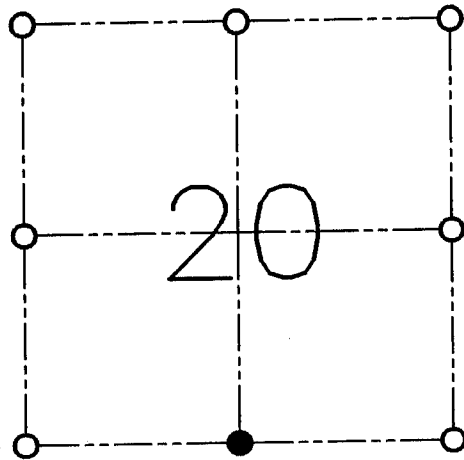
I, LARRY L. AUSTIN, DO HEREBY CERTIFY THAT ON TWENTY-NINTH DAY OF APRIL, 1998, I FOUND OCCUPATIONAL EVIDENCE OF THE SOUTH 1/4 OF SECTION 20, TOWN 4 NORTH, RANGE 5 WEST, OF THE FOURTH PRINCIPAL MERIDIAN, AND I RE-ESTABLISHED SAID CORNER ACCORDING TO THE WISCONSIN STATUTES AS SHOWN AND DESCRIBED HEREON.

DATED THIS TWENTY-NINTH DAY OF APRIL, 1998

Larry L. Austin
LARRY L. AUSTIN S-1903



SEAL



● = CORNER LOCATION

**SOUTH 1/4 OF SECTION 20
T 4 N R 5 W
TOWN OF GLEN HAVEN**

HISTORY OF ORIGINAL CORNER ESTABLISHMENT:

CORNER WAS SET IN 1832 BY ROBERT CLARK.

DESCRIPTION OF CORNER EVIDENCE FOUND:

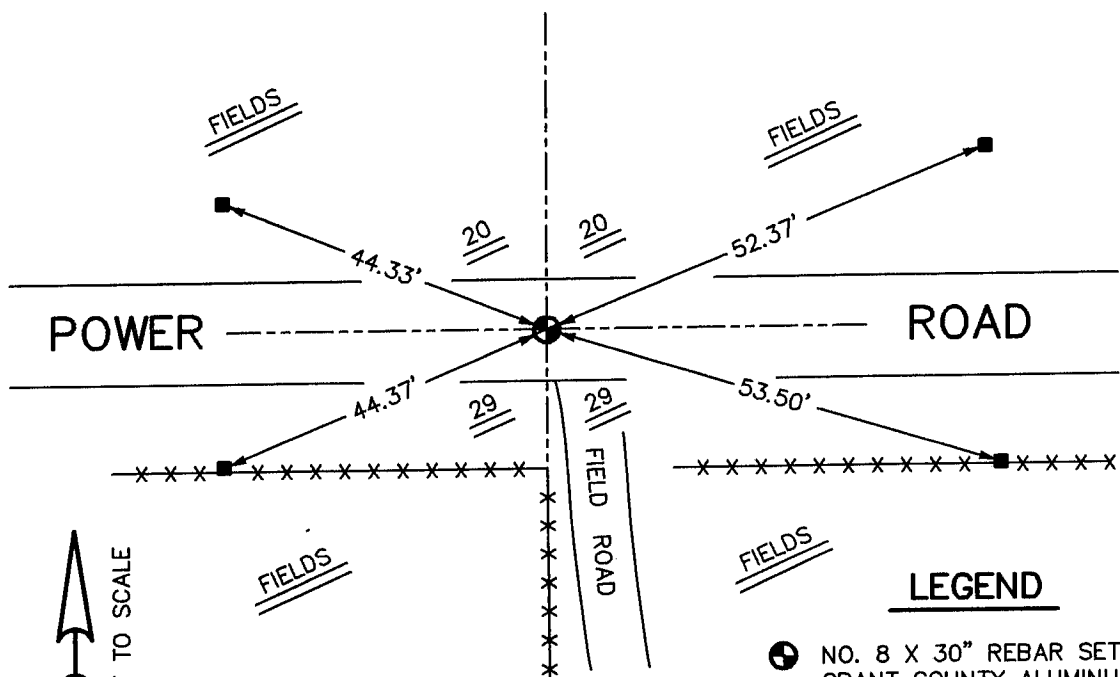
CORNER WAS SET IN THE CENTERLINE OF ROAD EAST-WEST FOR NORTHING. THE CORNER WAS SET ONLINE WITH FENCE SOUTH FOR EASTING. THIS LOCATION FIT WELL WITH OTHER CORNERS IN THE AREA. VERIFIED THIS LOCATION USING E.D.M AND G.P.S. METHODS.

DESCRIPTION OF CORNER AND WITNESS MONUMENTS, REFERENCES AND ACCESSORIES USED TO PERPETUATE THE ORIGINAL OR RE-ESTABLISHED LOCATION OF THIS CORNER:

WITNESS TO THE CORNER LOCATION:

BOBBY SEDGWICK
SHELBY BLINDERT

SKETCH:



LEGEND

- NO. 8 X 30" REBAR SET WITH GRANT COUNTY ALUMINUM CAP
- NO. 4 X 16" REBAR SET
- *- EXISTING FENCE