

U. S. PUBLIC LAND SURVEY MONUMENT RECORD

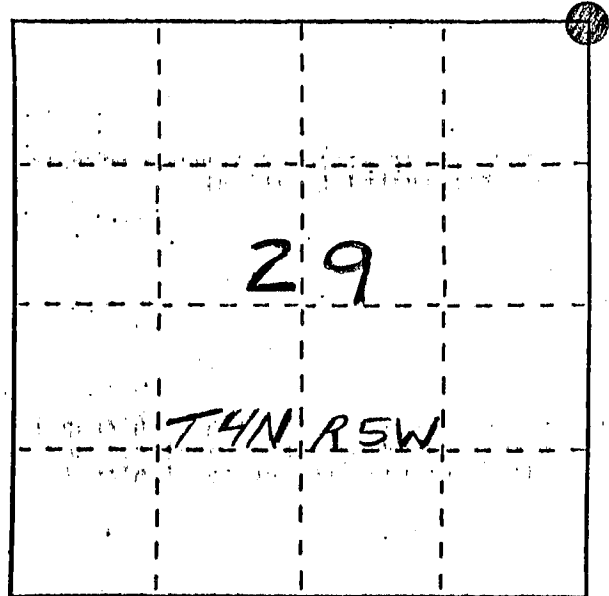
INSTRUCTIONS:

This record shall show the location of the corner and shall include all of the following nine elements (a through i).

- (a) Identify the corner by reference to the U.S. public land survey system.

● = Corner monument restored.

NE COR., SEC 29
 T4N, R5W
 OF THE 4th P.M., GRANT
 COUNTY, WISCONSIN

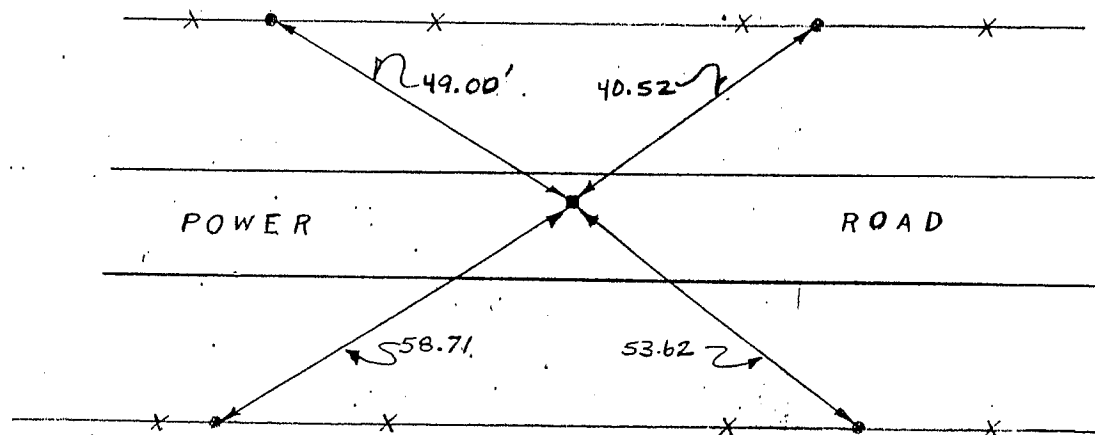


- (b) Describe any record evidence, monument evidence, occupational evidence, testimonial evidence or any other material evidence you considered, and whether the monument was found or placed.

NO RECORD FOUND SINCE ORIGINAL SURVEYS, MONUMENT WAS PLACED BASED ON D.P.T. R.O.W. PLANS # 1972 SURVEY BY DALE DIXON & VERIFIED BY EDM TRAVERSE OF THE AREA.

- (c) In the plan view drawing below, provide reference ties to at least 4 witness monuments, or, if the location is within a municipality, to at least 2 witness monuments. (Witness monuments shall be made of concrete, natural stone, iron or other equally durable material.) Describe witness monuments.

- (d) Show a plan view drawing depicting the relevant monuments and reference ties which is sufficient in detail to enable accurate relocation of the corner monument if the corner monument is disturbed. Indicate north.



NO SCALE

LEGEND

■ 1" x 24" SMOOTH BAR SET

● 3/8" x 12" STEEL PEGS

X-X FENCELINE

29

89