

U.S. PUBLIC LAND SURVEY MONUMENT RECORD - GRANT COUNTY, WI

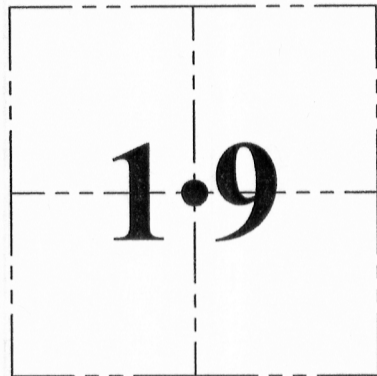
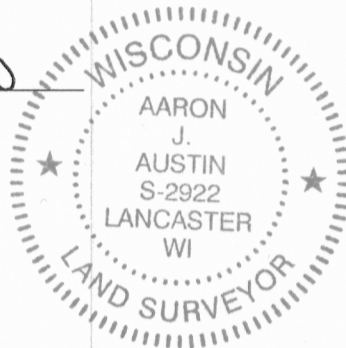
Section 19, Town 4 North Range 5 West, Town of Glen Haven

CERTIFICATE:

I, Aaron J. Austin, do hereby certify that the corner location on this record was determined by me and/or under my direct supervision and that this U.S. Public Land Survey Monument Record is correct and complete to the best of my knowledge and belief.

Dated this 11th day of November, 2012.

Aaron J. Austin
 Aaron J. Austin, S-2922



● = CORNER LOCATION

HISTORY OF CORNER ESTABLISHMENT:

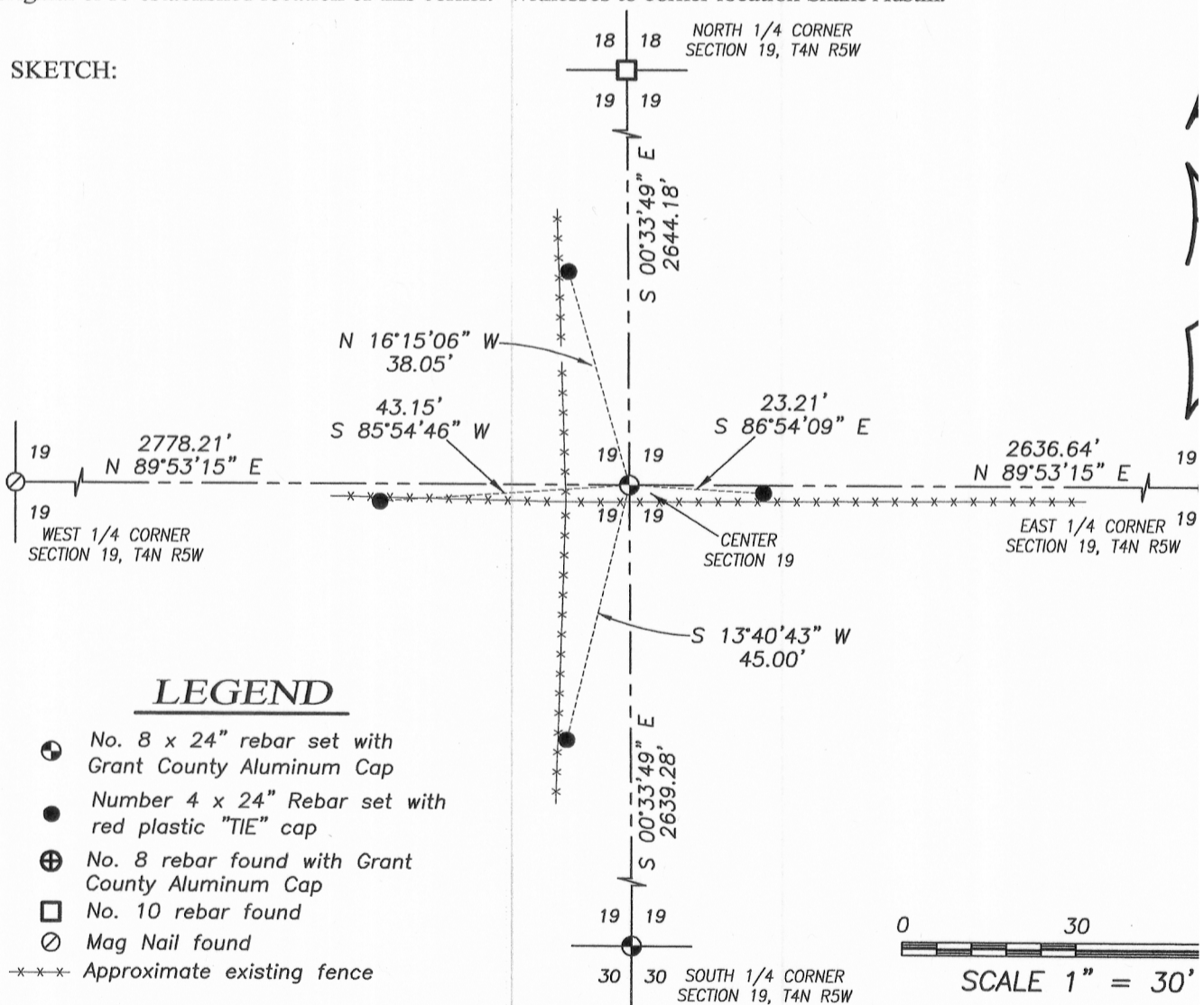
Corner was not set with original survey.
 1868-Barber set the corner on a survey in Book B, Page 526.

DESCRIPTION OF CORNER EVIDENCE FOUND:

Barber noted on his survey that he set the corner location at the intersection of East-West and North-South 1/4 lines. I reset the corner using this method.

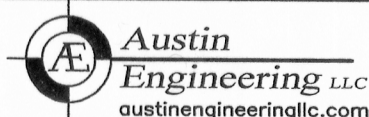
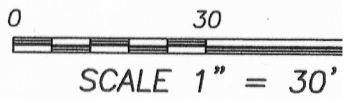
DESCRIPTION OF CORNER AND WITNESS MONUMENTS, references and accessories used to perpetuate the original or re-established location of this corner. Witnesses to corner location Shane Austin.

SKETCH:



LEGEND

- No. 8 x 24" rebar set with Grant County Aluminum Cap
- Number 4 x 24" Rebar set with red plastic "TIE" cap
- ⊕ No. 8 rebar found with Grant County Aluminum Cap
- No. 10 rebar found
- Mag Nail found
- x-x-x- Approximate existing fence



4211 HWY 81 E, LANCASTER, WI 53813
 PHONE: 608-723-6363 FAX: 608-723-6702

JOB NO: 12s183
 G:\T4NR5W\T4NR5W
 H:\TIE\T4NR5W\74.5

FIELDBOOK: TDSR
 DRAWN BY: AJ AUST
 CREW: SW AUSTIN