

U.S. PUBLIC LAND SURVEY MONUMENT RECORD - GRANT COUNTY, WI

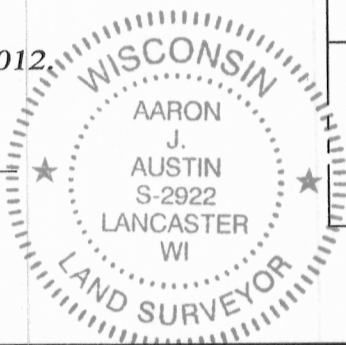
Section 19, Town 4 North Range 5 West, Town of Glen Haven

CERTIFICATE:

I, Aaron J. Austin, do hereby certify that the corner location on this record was determined by me and/or under my direct supervision and that this U.S. Public Land Survey Monument Record is correct and complete to the best of my knowledge and belief.

Dated this 11th day of November, 2012.

Aaron J. Austin
 Aaron J. Austin, S-2922



● = CORNER LOCATION

HISTORY OF CORNER ESTABLISHMENT:

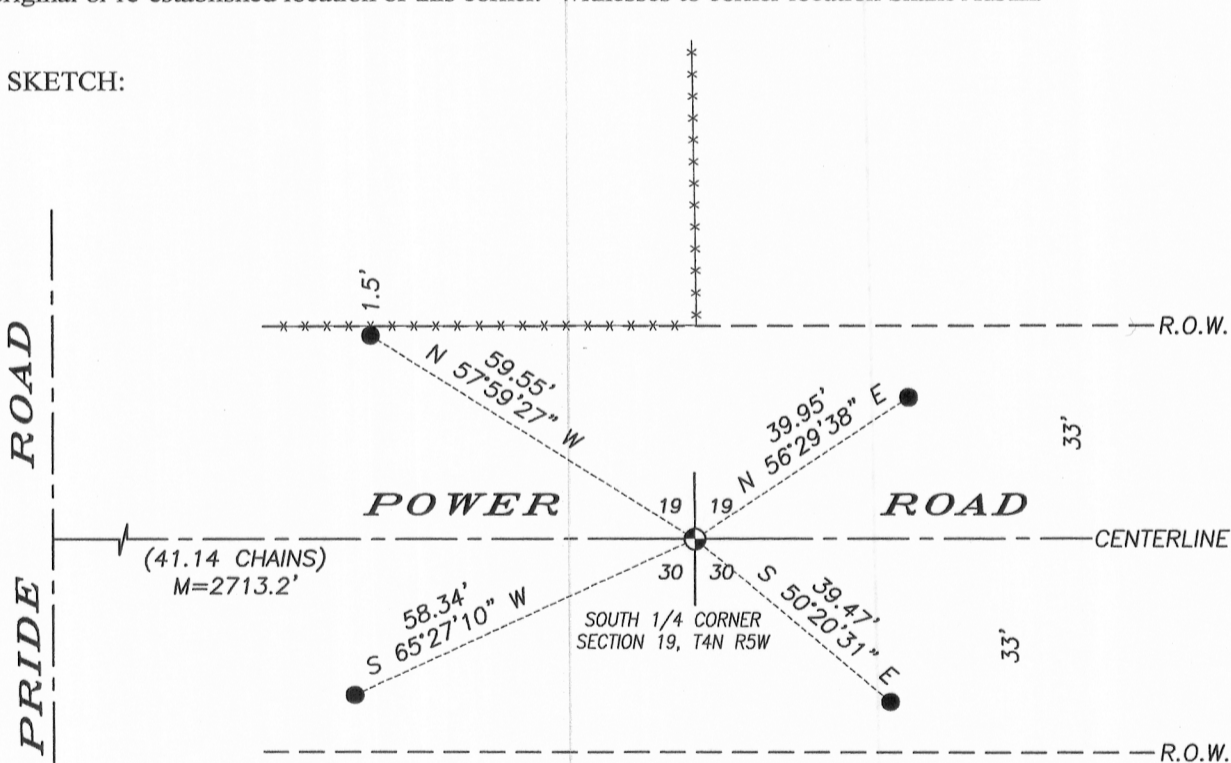
- 1833-Parke set original corner.
- 1842-Freeman measured to the corner on a Survey in Book A, Page 118.
- 1856-Corner was measured to on a Survey in Book B, Page 489.
- 1856-Corner was shown on a survey in Book B, Page 490.
- 1868-Barber measured to the corner on a survey in Book B, Page 526.

DESCRIPTION OF CORNER EVIDENCE FOUND:

I reset the corner at occupied centerline of Power Road and fence North. This matched original notes well to measurements taken at the occupied centerline of Power and Pride Roads as well as measurements taken to the Southeast corner of Section 19.

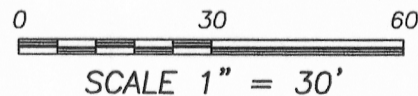
DESCRIPTION OF CORNER AND WITNESS MONUMENTS, references and accessories used to perpetuate the original or re-established location of this corner. Witnesses to corner location Shane Austin.

SKETCH:



LEGEND

- No. 8 x 24" rebar set with Grant County Aluminum Cap
- Number 4 x 24" Rebar set with red plastic "TIE" cap
- x-x-x- Approximate existing fence



4211 HWY 81 E, LANCASTER, WI 53813
 PHONE: 608-723-6363 FAX: 608-723-6702

JOB NO: 12s183
 G:\T4NR5W\T4NR5W
 H:\TIE\T4NR5W\92

FIELDBOOK: TDSR
 DRAWN BY: AJ AUSTIN
 CREW: SW AUSTIN