

# GRANT COUNTY CERTIFIED LAND CORNER

CORNER NO. 91

**CERTIFICATE:**

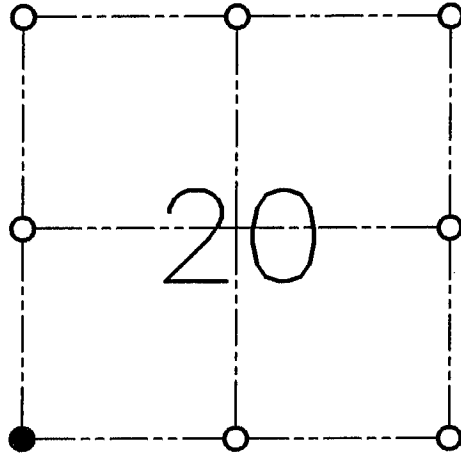
I, LARRY L. AUSTIN, DO HEREBY CERTIFY THAT ON TWENTY-NINTH DAY OF APRIL, 1998, I FOUND OCCUPATIONAL EVIDENCE OF THE SOUTHWEST CORNER SECTION 20, TOWN 4 NORTH, RANGE 5 WEST, OF THE FOURTH PRINCIPAL MERIDIAN, AND I RE-ESTABLISHED SAID CORNER ACCORDING TO THE WISCONSIN STATUTES AS SHOWN AND DESCRIBED HEREON.

DATED THIS TWENTY-EIGHTH DAY OF APRIL, 1998

*Larry L. Austin*  
LARRY L. AUSTIN S-1903



SEAL



● = CORNER LOCATION

**SOUTHWEST CORNER OF SECTION 20  
T 4 N R 5 W  
TOWN OF GLEN HAVEN**

**HISTORY OF ORIGINAL CORNER ESTABLISHMENT:**

CORNER WAS SET IN 1832 BY ROBERT CLARK.

**DESCRIPTION OF CORNER EVIDENCE FOUND:**

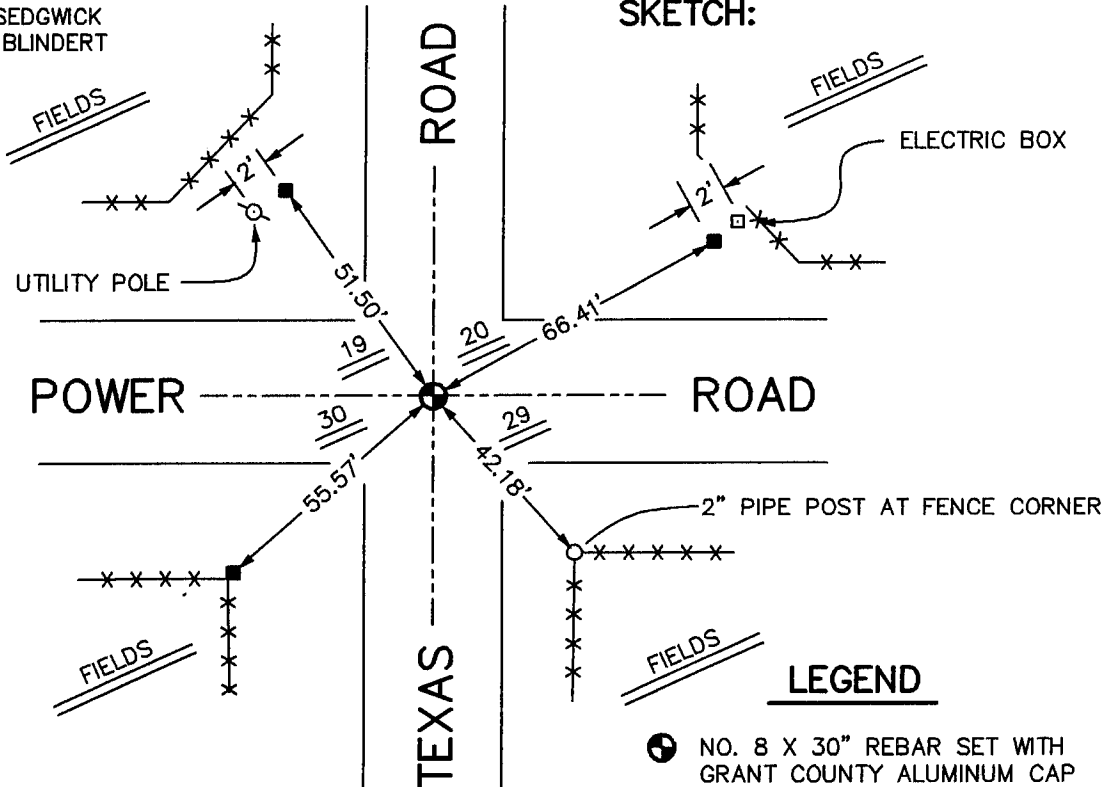
CORNER WAS SET IN THE CENTERLINE-CENTERLINE OF TOWN ROADS. THIS LOCATION FIT WELL WITH OTHER CORNERS (MONUMENTED-OCCUPIED) IN THE AREA. VERIFIED THIS LOCATION USING E.D.M. AND G.P.S. METHODS.

**DESCRIPTION OF CORNER AND WITNESS MONUMENTS, REFERENCES AND ACCESSORIES USED TO PERPETUATE THE ORIGINAL OR RE-ESTABLISHED LOCATION OF THIS CORNER:**

**WITNESS TO THE CORNER LOCATION:**

BOBBY SEDGWICK  
SHELBY BLINDERT

**SKETCH:**



**LEGEND**

- NO. 8 X 30" REBAR SET WITH GRANT COUNTY ALUMINUM CAP
- NO. 4 X 16" REBAR SET
- \*- EXISTING FENCE