

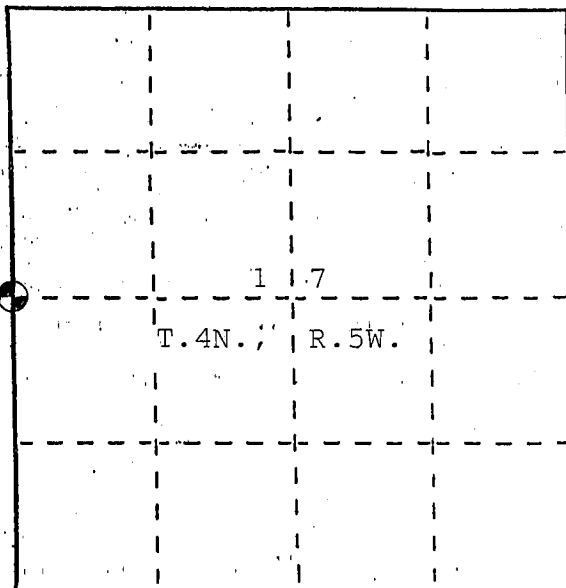
# U. S. PUBLIC LAND SURVEY MONUMENT RECORD

**INSTRUCTIONS:** This record shall show the location of the corner and shall include all of the following nine elements (a through i).

(a) Identify the corner by reference to the U.S. public land survey system.

○ = Corner monument restored.

The West Quarter Corner of Section 17, Town 4 North, Range 5 West. Glen Haven Township, Grant County, Wisconsin.



(b) Describe any record evidence, monument evidence, occupational evidence, testimonial evidence or any other material evidence you considered, and whether the monument was found or placed.

Section corner Monument (3/4" Iron Bar) was found as described on a Larry L. Austin tie sheet dated June 6, 1993. The section corner ties were not identifiable, so I set new ties.

(c) In the plan view drawing below, provide reference ties to at least 4 witness monuments, or, if the location is within a municipality, to at least 2 witness monuments. (Witness monuments shall be made of concrete, natural stone, iron or other equally durable material, ~~except~~ wood.) Describe witness monuments.

(d) Show a plan view drawing depicting the relevant monuments and reference ties which is sufficient in detail to enable accurate relocation of the corner monument if the corner monument is disturbed. Indicate north.

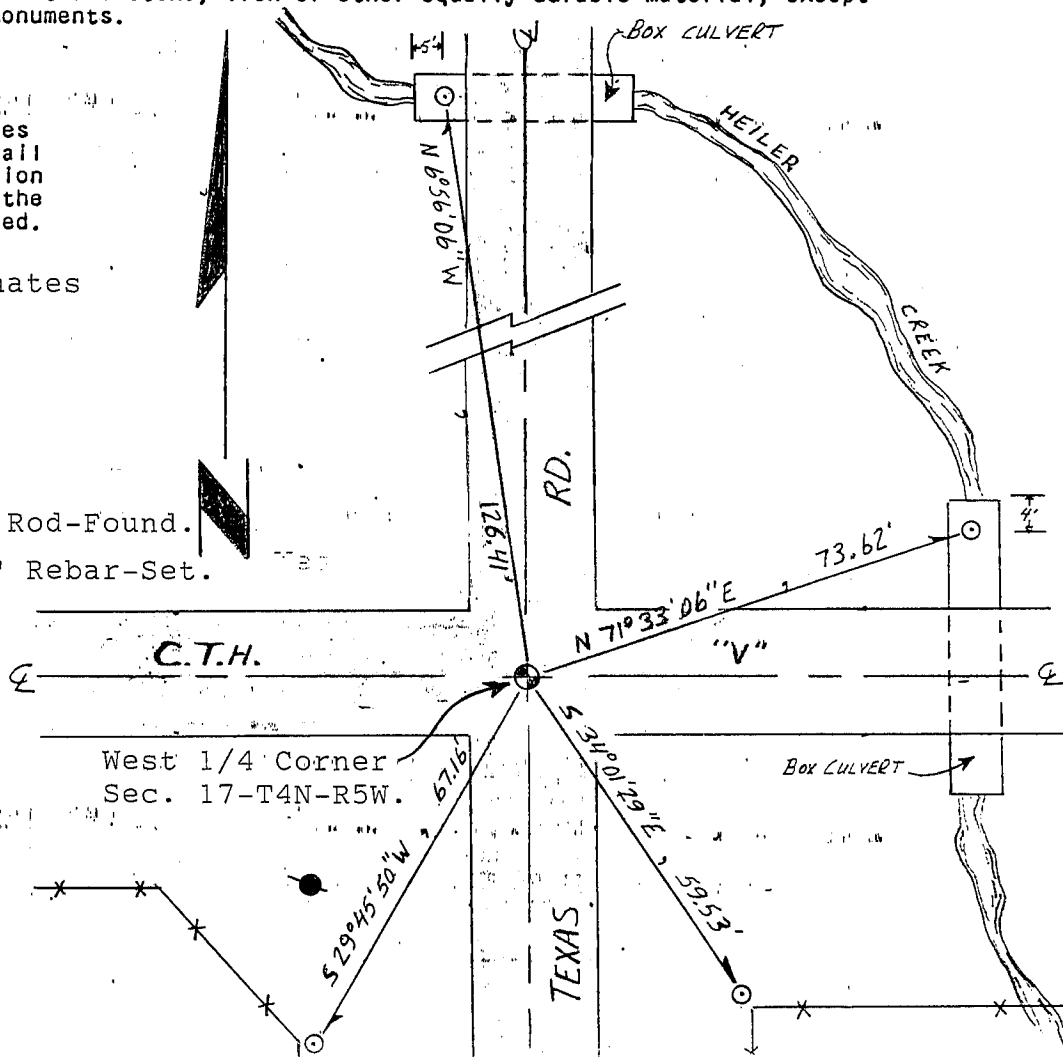
Grant County Coordinates

X = 741,629.1'

Y = 514,236.1'

Legend

- ⊙ No. 6 (3/4") Iron Rod-Found.
- No. 6 (3/4") x 24" Rebar-Set.
- Power Pole.



Scale: 1" = 30'

e) Describe any material discrepancy between the location of the corner as restored or reestablished and the location of that corner as previously restored or reestablished by distance and direction. Show the discrepancy on the plan view drawing under (d), above. Show the distances between the corner as previously restored or reestablished and (1) the corner as restored or reestablished, and (2) to at least 2 of the witness monuments shown on the drawing in (d), above.

None.

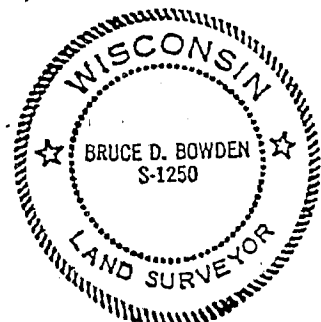
f) Was the corner restored through acceptance of (1) an obliterated evidence location, or, (2) a found perpetuated location?

2) a found perpetuated location.

(g&h) Was the corner reestablished through lost corner proportionate methods? If so, show the method, including the directions and distances to other public land survey corners used as evidence or used for proportioning in determining the corner location?

No.

Affix Land Surveyor Seal



(i) I, BRUCE D. BOWDEN

(type or print name) certify that the corner location shown on this record was determined by me or under my direction and control and that this U.S. Public Land Survey Monument Record is correct and complete to the best of my knowledge and belief.

Signature

Date

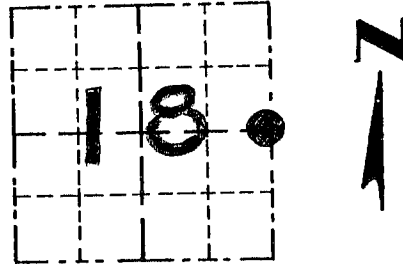
Bruce D. Bowden Oct 2, 1997

# GRANT COUNTY

## Survey Monument Record

TYPE OF MONUMENT 3/4" x 24" IRON BAR SET  
 STATE PLANE COORDINATES: N \_\_\_\_\_  
 E \_\_\_\_\_  
 ELEVATION — M.S.L. DATUM: \_\_\_\_\_  
 THETA ANGLE: \_\_\_\_\_  
 FIELD BOOK: 93-15  
 PAGE 6-7

CORNER NO. 55  
 SECTION 18  
 TOWN 4N  
 RANGE 5W



LOCATION  
 (Indicated by "X")

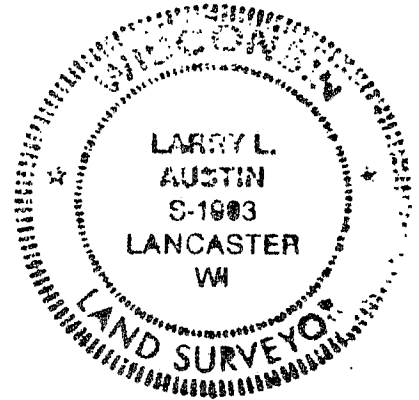
### BASIS FOR MONUMENT LOCATION

(Use reverse side if necessary)

Show info such as: History of corner, with reference to Vol. and pg., dates, surveyor; exact description of monument replaced; if location computed, by taped or EDM traverse; landowner, remarks, etc.

CORNER SET IN 1832 BY  
 ROBERT CLARK. POST IN MOUND  
 WAS UNRECOVERABLE. NO RECORD  
 OF CORNER FOUND SINCE ORIGINAL  
 SURVEYS. CORNER SET AT A OCCUPIED  
 E/ E OF C.T.H. "V" AND  
 TEXAS ROAD. VERIFIED ITS  
 LOCATION BY EDM TRAVERSE  
 OF AREA.

SEAL:



CERTIFIED CORRECT

*Larry L. Austin*  
 Registered Land Surveyor

DATE: 6/6/93

### TIE SKETCH

Show at least three (3) ties and monument

#### LEGEND

- 3/8" x 12" SPIKE PLACED
- 3/4" x 24" IRON BAR SET
- ⊙ POWER POLE

