

U.S. PUBLIC LAND SURVEY MONUMENT RECORD - GRANT COUNTY, WI

Section 17, Town 4 North Range 5 West, Town of GLEN HAVEN

CERTIFICATE:

I, Aaron J. Austin, do hereby certify that the corner location on this record was determined by me and/or under my direct supervision and that this U.S. Public Land Survey Monument Record is correct and complete to the best of my knowledge and belief.

Dated this 30 th day of Nov., 2012.

Aaron J. Austin
 Aaron J. Austin, S-2922



● = CORNER LOCATION

HISTORY OF CORNER ESTABLISHMENT:

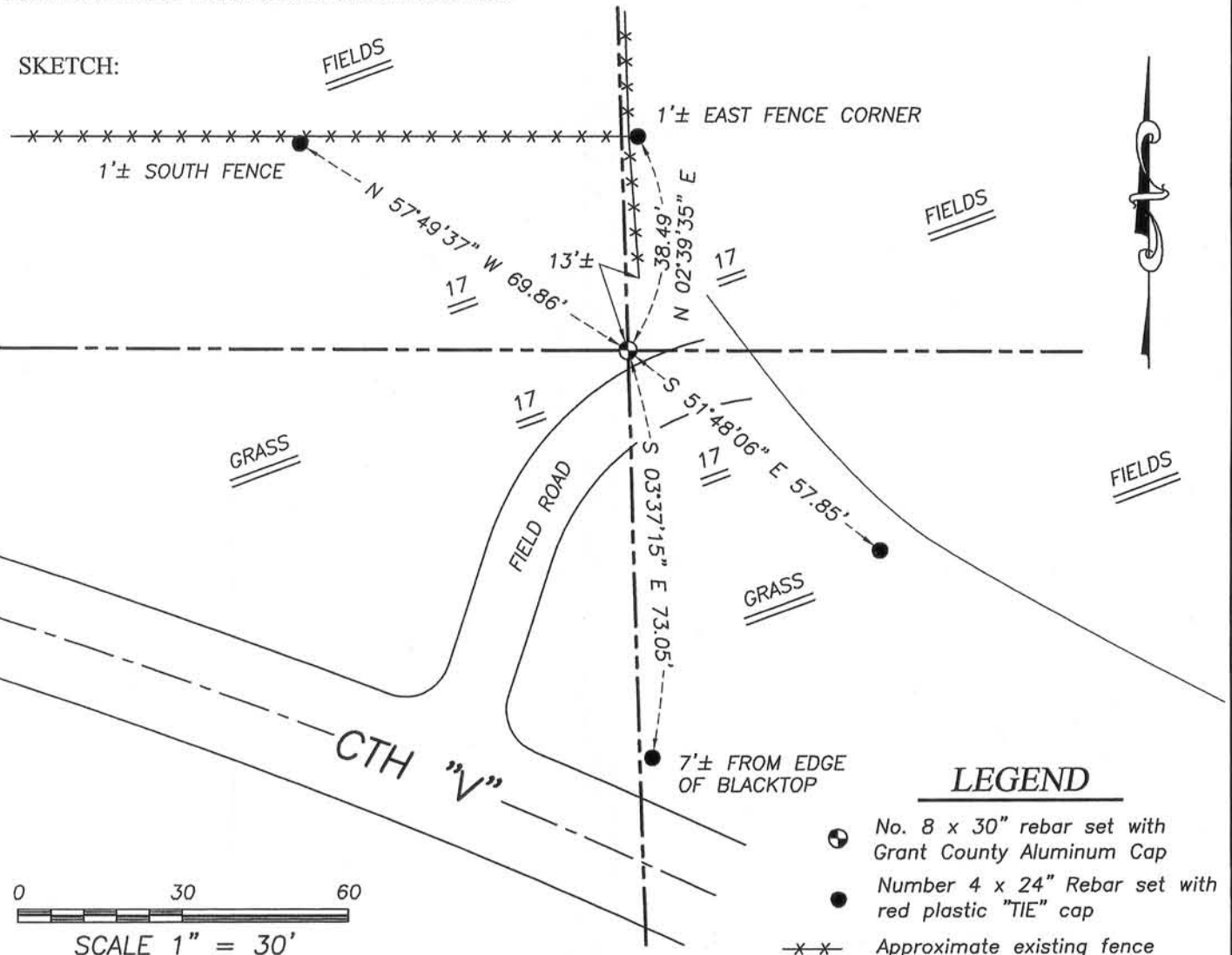
Corner was not set with Original Surveys. In 1857 James Wilson Jr set a stone on a survey filed in Book "C", Page 163 of Surveys. In 1868, Joel Barber found the stone set by Wilson on a survey filed in Book "C", Page 219 of Surveys. No other record of the corner was found.

DESCRIPTION OF CORNER EVIDENCE FOUND:

No evidence of the Stone was found. I set this corner at the intersection of the North-South 1/4 lines and the East-West 1/4 lines. I verified this location with G.P.S. methods of the area.

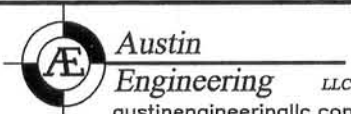
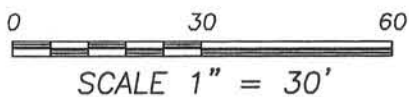
DESCRIPTION OF CORNER AND WITNESS MONUMENTS, references and accessories used to perpetuate the original or re-established location of this corner. Witness to corner location: Shane Austin

SKETCH:



LEGEND

- No. 8 x 30" rebar set with Grant County Aluminum Cap
- Number 4 x 24" Rebar set with red plastic "TIE" cap
- x-x- Approximate existing fence



4211 HWY 81 E, LANCASTER, WI 53813
 PHONE: 608-723-6363 FAX: 608-723-6702

JOB: 12s185
 G:\T4NR5W\21
 H:\TIE\T4NR5W\55A

FIELDBOOK: TDSR
 DRAWN BY: SW AUSTIN
 CREW: SWA-AJA

55A

DEC 04 2012