

**U.S. PUBLIC LAND SURVEY MONUMENT RECORD - GRANT COUNTY, WI**

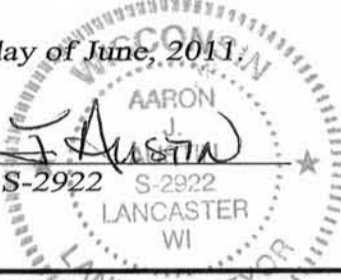
Section 20, Town 4 North Range 5 West, Town of Glen Haven

**CERTIFICATE:**

I, Aaron J. Austin, do hereby certify that the corner location on this record was determined by me and/or under my direct supervision and that this U.S. Public Land Survey Monument Record is correct and complete to the best of my knowledge and belief.

Dated this 16th day of June, 2011

*Aaron J. Austin*  
 Aaron J. Austin, S-2922



● = CORNER LOCATION

**HISTORY OF CORNER ESTABLISHMENT:**

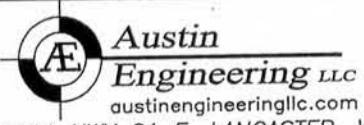
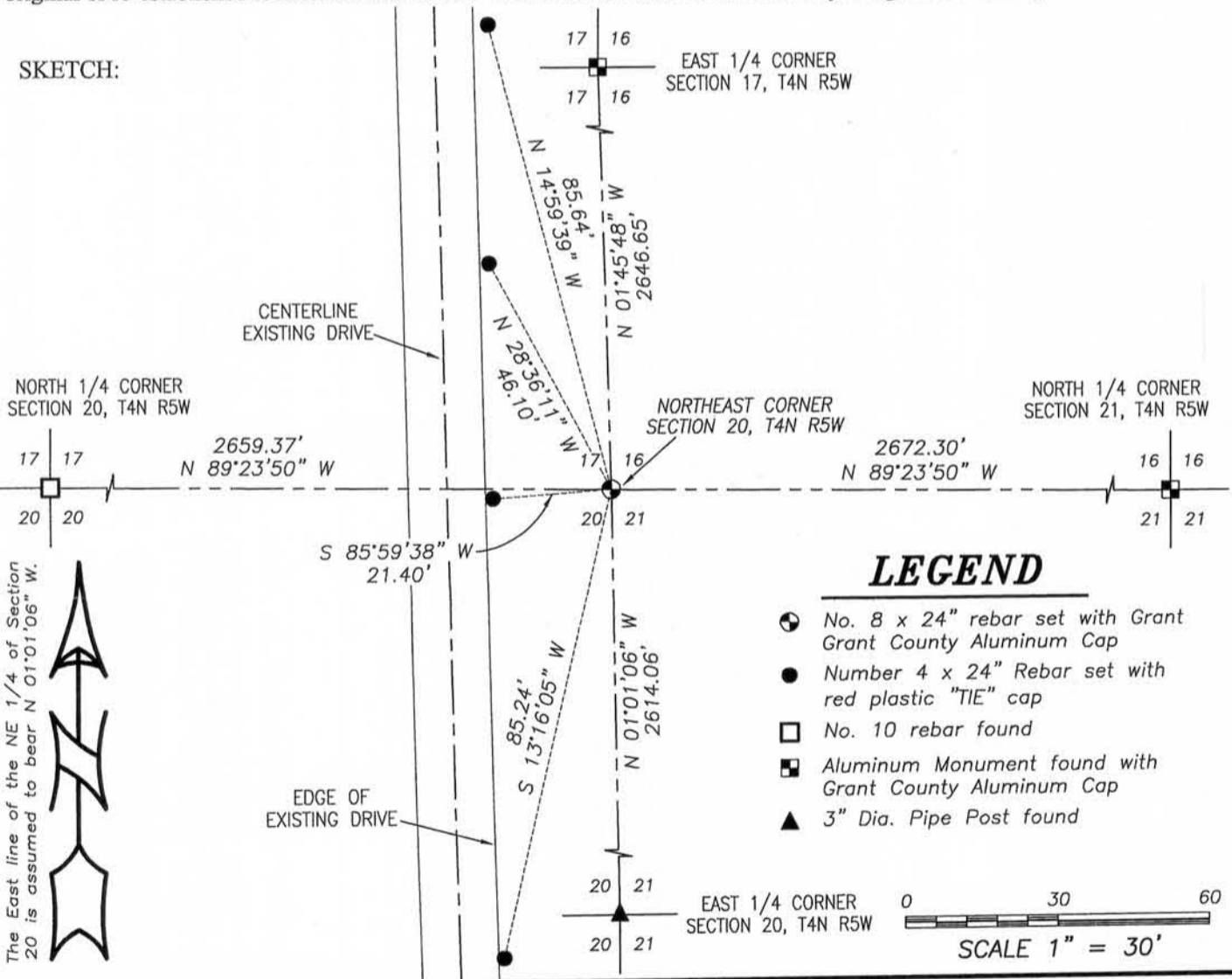
Corner was originally set by Robert Clark in 1832. Wiltse tied to the corner in 1844 with no mention of corner. Struntz found the original corner in 1849. Wilson and hitney Hayden found the original corner in 1857. C. Whitney Hayden found the original corner in 1857. Barber found the original corner in 1868. Homer Ralph Jr. tied to the corner in 1969 with no mention of the monument. No other record was found of this corner.

**DESCRIPTION OF CORNER EVIDENCE FOUND:**

I was unable to locate any evidence of the original corner. I reset the corner propotionally and on line between the North 1/4 corner of Section 20 and the North 1/4 corner of Section 21 and verified this location by E.D.M. and G.P.S. methods.

**DESCRIPTION OF CORNER AND WITNESS MONUMENTS, references and accessories used to perpetuate the original or re-established location of this corner. Witnesses to corner location Bobby Sedgwick & Shelby Blindert**

**SKETCH:**



JOB NO: 11s170  
 G:\T4NR5W\21  
 H:\TIE\T4NR5W\69

FIELDBOOK: TDSR  
 DRAWN BY: AJ AUSTIN  
 CREW: BS-SB

4211 HWY 81 E, LANCASTER, WI 53813  
 PHONE: 608-723-6363 FAX: 608-723-6702

NOV 04 2011